

# Neutrarust 661®

## Rust Converter & Primer



The Original Rust Converter developed over 40 years ago and still recognised around the world as the best rust converter for almost any rusted ferrous metal project. Neutrarust 661® has a superior coating consistency providing a high-quality rust converted surface ready for painting

- \* Classified Non-Hazardous
- \* Easy to apply
- \* Asset protection
- \* Proven performance

### Technical Data Sheet

All ferrous metals corrode unless continually protected. The process is a complex action which always involves the availability of moisture and oxygen. This persistent, destructive and degenerative process is accelerated by associated surface contaminants such as mineral salts and acids. Only by absorbing or neutralising surface pollutants and completely excluding moisture and oxygen from the metal surface can adequate long term protective system be achieved.

Ultimately, rusted objects can become unsafe and unusable. Some rust control processes are only partially successful because they do not cope adequately with all three basic causes of ferrous metal corrosion: the elimination of surface contaminants, the removal of free moisture and oxygen from the metal surface and the protection of the treated surface by an impenetrable membrane.

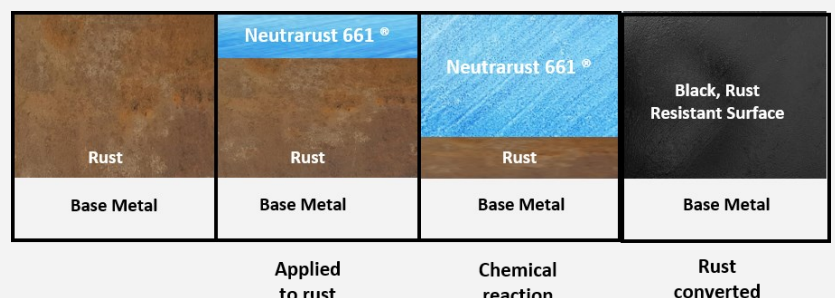
**Neutrarust 661® - The Revolutionary Rust Treatment System** is a unique corrosion control system developed for use on rusted ferrous metal surfaces. The rusted ferrous surface to be protected is converted on contact to a ready to paint, complex organic iron compound by the unique deoxygenating agent incorporated in Neutrarust 661®. This corrosion resistant layer is formed by utilising all the surface moisture and oxygen during the reduction reaction. Concurrently, the special copolymer latex emulsion covered system dries to form an impermeable barrier to oxygen and moisture.

**Neutrarust 661®** is a white organic copolymer latex that dries on rusted surfaces and chemically converts these to a dry layer in 30 minutes under normal conditions, forming an independent complex iron/iron-oxide/organic chemical compound which gives protection for the treated surface. The continuous chemical curing of Neutrarust 661® forms a chemical bond with every metal interface, pacifying, neutralising and chemically converting rust. The ready to paint chemical compound layer is completely neutral and can be used as a primer, without further treatment, or use standard or synthetic resin lacquers, oil-based paints, two-component lacquers or bitumastic and oil tar-based finishes including micaceous iron-oxide paints. Neutrarust 661® is non-toxic and does not contain phosphoric acid or lead.

**Neutrarust 661® has approvals from the British Ministry of Defence and NATO**

Neutrarust 661® Trademark owned by

**Neutra Rust Europe Ltd**



# Neutrarust 661®



## SALT SPRAY PERFORMANCE (ASTM B117)

### Features

- ♦ Excellent adhesion contributes to enhanced corrosion resistance
- ♦ Easy to apply with limited preparation required
- ♦ Fast drying: ideal for multiple applications
- ♦ Temperature resilience means broader application capabilities

**Neutrarust 661®**  
**produced by**  
**Neutrarust Europe Ltd**



### High performance and stability

After 750 hours exposure, rust treated with Neutrarust 661® has superior cross hatch adhesion performance when compared with commercial benchmark product. On the completion of the exposure the panels were removed, cleaned and photographed. Neutrarust 661® protected the steel panels from highly corrosive salt fog environment. Corrosion damage was minimal to non-existent on the coated panels



Commercial Benchmark  
2 coats - 750 hours salt  
fog cold rolled steel



Neutrarust 661® Technolo-  
gy 2 coats - 750 hours salt  
fog cold rolled steel

### Resilient to temperature changes

After application Neutrarust 661® provides excellent resistance to degradation due to temperature variations in many different environments including sea-going vessels and many offshore applications

The information contained herein is believed to be reliable, but no representations, guarantees or warranties of any kind are made as to its suitability for particular applications or the results to be obtained. Because of the variations in methods, conditions and equipment used commercially in this product application, no warranties or guarantees are made as to the suitability of the products for applications. Testing and end product performance are the responsibility of the user. Neutra Rust Europe Ltd shall not be liable for and the customer assumes all risk and liability of any use or handling of any material beyond Neutra Rust Europe Ltd.

**Neutrarust 661®** Trademark owned by **Neutra Rust Europe Ltd**

website: [www.neutrarust.co.uk](http://www.neutrarust.co.uk)

email: [sales@neutrarust.co.uk](mailto:sales@neutrarust.co.uk)

# Neutrarust 661®

## Rust Converter & Primer



- **Water based – Environmentally Friendly**
- **Minimum surface preparation required**
- **Produces a hard, superior coating consistency, ready to paint water insoluble hydrophobic film**
- **Fast drying and curing**
- **Free from hazardous mineral acids**
- **Self priming - compatible with most paint products**

### Preparation

Important - It is recommended an initial test area to be tried at all times, in the working conditions with the other materials being used to ensure compatibility of Neutrarust 661® with the rust surface being treated.

The rust surface to be treated should be free from oil or grease deposits. Remove any loose flakes or high spots of rust, loose or blistered paint using a wire brush or scraper. Salt must be removed using a suitable detergent and then rinsed with fresh water. It is important **not** to remove all traces of rust.



### Application

Surface temperature at application should be above 5°C and below 40°C. Stir well before use and transfer a quantity of rust remover into a non metallic container for application. Apply the Neutrarust 661® using a brush, roller or airless spray equipment. Work well into deeply pitted areas using a brush. Ensure all areas of corrosion are covered. Surplus may cause staining of surrounding area if allowed to dry. Remove surplus immediately. Do not pour the unused rust remover back into the original container, as any contamination can degrade the fresh product. Depending on the condition of the surface, up to three coats may be required to ensure complete coverage and conversion of all corrosion present.



### Drying Time

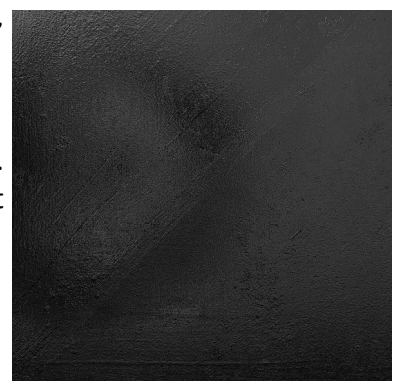
Depending on temperature and humidity, touch dry in 15-45 minutes. Do not apply additional coats for at least one hour after the previous coat is dry to touch. Do not allow the coating to get wet whilst drying. If applying overcoat, allow to cure for 24 - 48 hours before applying. Test compatibility before use.

### Covering Capacity

Dependant upon the application method and the condition of the surface. Coverage can reduce on very rough or pitted surfaces. An application of a wet film thickness of 50-100 micron should cover 12 square metres per litre.

*Use within 12 months of opening the container and avoid frost*

**Neutrarust 661®** Trademark owned by **Neutra Rust Europe Ltd**



# Neutrarust 661®

## Rust Converter & Primer



### TEMPERATURE RANGE, USE & STORAGE

Neutrarust 661® should not be applied to cold metal below 5°C or hot metal above 40°C. But will withstand temperatures between -40°C and 60°C when dried hard. Store between 5°C and 35°C. Not to be used or stored outside of recommended temperatures. Use within 12 months of opening. Replace cap after use. Use in adequately ventilated area. Gloves and goggles are recommended. Do not store in direct sunlight.

**DRYING TIMES** – Depending on temperature and humidity, touch dry in 15-45 minutes. Do not apply additional coats for at least one hour after the previous coat is dry to touch. Between coats: summer and winter drying times will vary. If applying overcoat, allow to cure for 24 - 48 hours before applying. Test compatibility before use. Protect from rain during drying

**CLEANING BRUSHES OR SPILLAGE** Use detergent water wash and rinse with water or industrial solvents.

Neutrarust 661® **MUST NOT BE SWALLOWED** If swallowed, wash out mouth with water and give water to drink. If in any doubt as to effectiveness of treatment, obtain medical attention immediately. Harmful by inhalation treat symptomatically. Eyes: splashes to the eye should be removed by washing with eyewash solution or water for at least 10 minutes. Skin: splashes should be washed off with water and soap as soon as possible. If in doubt in any case obtain medical attention immediately.

P280: wear protective gloves & eye protection

EUH210: Safety data sheet available on request

**KEEP OUT OF REACH OF CHILDREN. SLIGHT IRRITANT**

**Classified NON HAZARDOUS, NON COMBUSTIBLE & DRY FILM IS FIRE RETARDANT**

*Use within 12 months of opening the container*