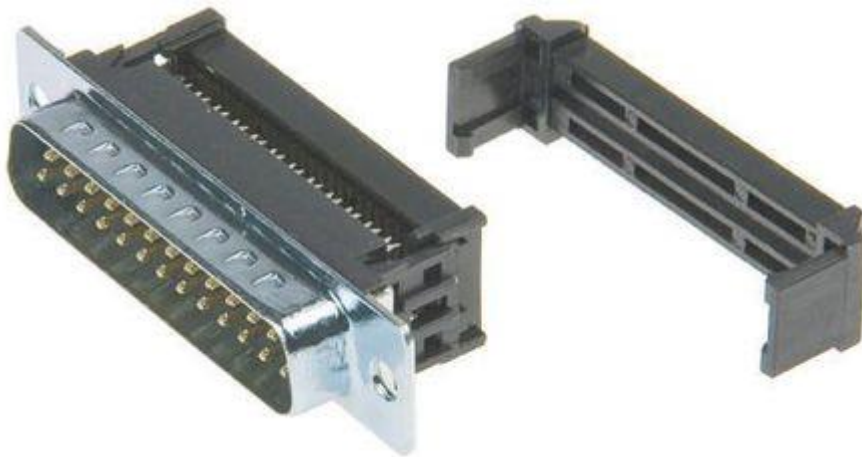


Datasheet

Pitch 15 Way IDC D-sub Connector, Socket, Zinc Plated Steel Shell

RS Stock number [492-654](#)



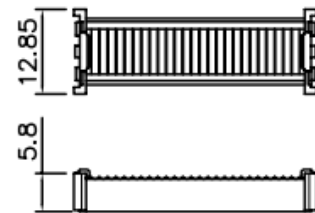
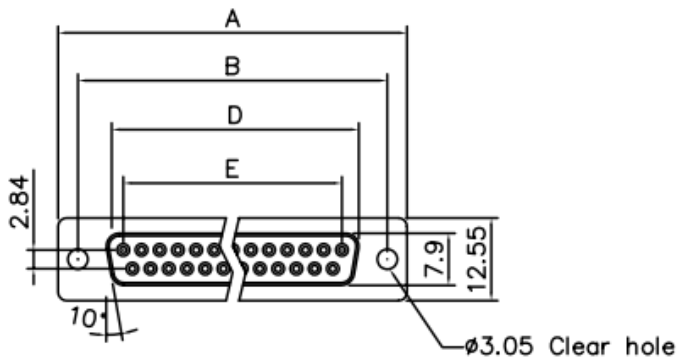
Specifications:

Material

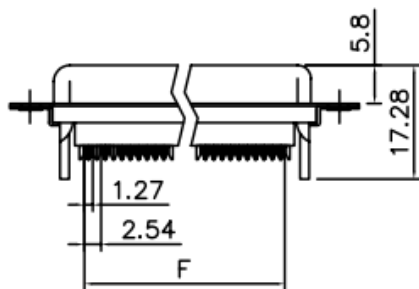
Insulator:	Glass filled thermoplastic PBT, UL94V-0
Contact:	Phosphor bronze
Contact Area:	Gold flash selective gold over 50u" nickel, solder tail: 100u" TIN over 50u" Nickel shell: blue zinc plated

Electrical

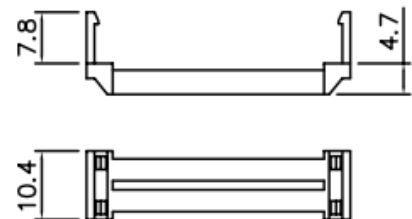
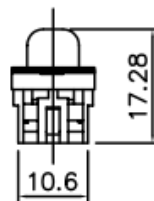
Contact Resistance:	20 milliohms, max. at 1A dc
Insulation Resistance:	1000 magohms at 500 VDC
Dielectric withstanding voltage:	1000 VAC/rms 60Hz for 1 minute
Current Rating:	3A
Voltage Rating:	250 VAC/rms 60Hz



Cover



Without Insulator Support



Strain Relief

Dimensions

Positions	A	B	D	E	F	
9	30.81	24.99	16.33	11.08	10.16	492648
15	39.14	33.32	24.66	19.39	17.78	492654
25	53.04	47.04	38.38	33.24	30.48	492660
37	69.32	63.50	54.84	49.86	45.72	492658