



Easy Series Automation and Control Essentials Catalog 2024

Everything you need for your fit-for-purpose control panels

www.se.com

Life Is On

Schneider
Electric

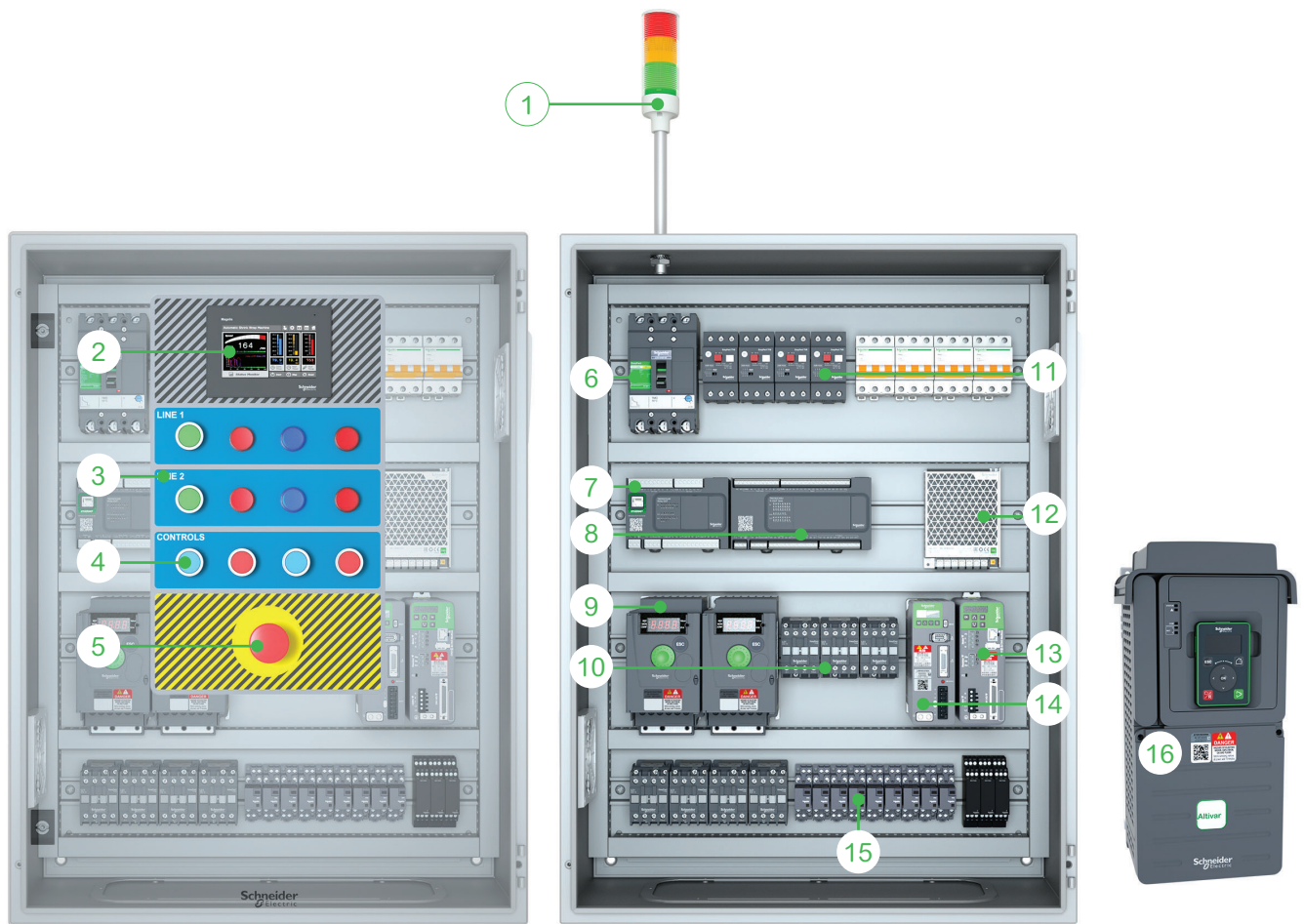


The Essentials for your control panels

Within this catalog you'll find all the components you need to deliver high core performance focused industrial control panels and machines.

The catalog will help you build your fit-for-purpose equipment faster and boost the efficiency of your industrial automation business.

New 2024 product highlights



- | | | | |
|---|--|----|---|
| 1 | Easy Harmony XVG Tower Light | 9 | Easy Altivar ATV 310 Variable Speed Drives |
| 2 | Easy Harmony ET6 Touch screen panel | 10 | EasyPact TVS Contactor |
| 3 | Harmony Customizable Legend Panel | 11 | EasyPact TVS Motor Protection Circuit Breaker |
| 4 | Easy Harmony XA2 Pushbuttons | 12 | Easy Modicon ABL2 Power Supply |
| 5 | Easy Harmony XA2 Emergency Switching off Pushbuttons | 13 | Easy Lexium 26 Servo |
| 6 | EasyPact CVS Protection of Distribution System | 14 | Easy Lexium 16 Servo |
| 7 | Easy Modicon M200 Logic Controller | 15 | Easy Harmony RXM Electromechanical Relays |
| 8 | Easy Modicon M100 Logic Controller | 16 | Easy Altivar ATV 610 Variable Speed Drives |

Make your everyday work smoother and easier

As a machine builder or panel builder, you need a reliable source of products to deliver high core performance focused equipment and services on time.

When working with Schneider, you've got that covered.

See for yourself!

Count on a reliable partner for your business

With Schneider Electric, a world leader in automation and control, you get reliable, robust, and affordable products for you and your customers.

Our global network of local distributors ensures high product availability and quick delivery times. So you can easily meet your deadlines.

When just enough is just right!

Save time on component selection with this catalog of automation and control essentials. Use our handy online selectors and configurators to easily find the best solution for your specific application and all the technical information you need.

Our tools help machine builders and panel builders improve the efficiency of their everyday work and build fit-for-purpose equipment with high core performance quicker.

Take advantage of learning opportunities

Gain access to our diverse learning resources, providing practical knowledge and tips, and open new opportunities for your business.

Explore the manuals, tutorials, "how to" videos, and online courses to broaden your skills and make your daily work faster and simpler.

- 1 Go to product selectors and configurators
- 2 Download the digital catalog
- 3 Explore our learning resources





Get all the products
you need from a distributor
close to you

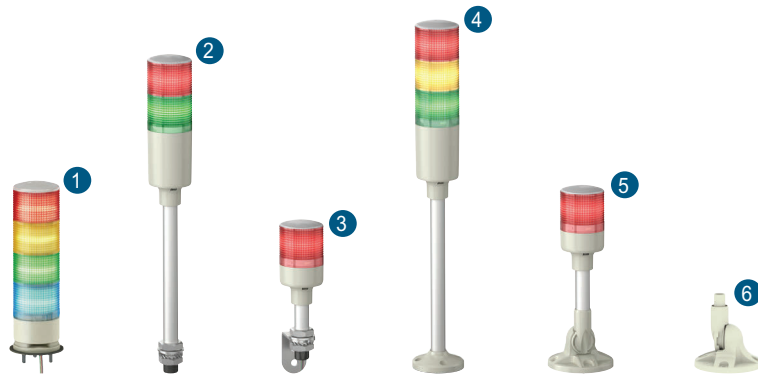
General contents

01	Easy Harmony control and signaling.....	6
02	Easy Harmony ET6 touch screen panel.....	16
03	EasyPact protection of distribution system.....	20
04	Easy TeSys motor control and protection.....	24
05	Easy Altivar variable speed drives.....	35
06	Easy Harmony electromechanical relays.....	43
07	Easy Modicon ABL2 power supplies.....	45
08	Easy Lexium motion control.....	47
09	Easy Modicon Logic controllers.....	71



01. Easy Harmony
pushbuttons, switches, pilot
lights and signaling devices

Easy Harmony XVG Ø 60 monolithic tower lights



1 With base mounting							
Light source		LED for steady light					
Colors (1)		● Red, ● Green	● Red, ● Amber, ● Green			● Red, ● Amber, ● Green, ● Blue	
Voltage		24 VAC/VDC	220~240VAC	24 VAC/VDC	220~240VAC		24 VAC/VDC
Reference	Without buzzer, IP 53	XVGB2W	XVGM2W	XVGB3W	XVGM3W		XVGB4W
	With buzzer, IP 42	XVGB2SW	XVGM2SW	XVGB3SW	XVGM3SW		XVGB4SW
2 With direct aluminium tube mounting							
Light source		LED for steady light					
Colors (1)		● Red, ● Green	● Red, ● Amber, ● Green			● Red, ● Amber, ● Green, ● Blue	
Voltage		24 VAC/VDC	220~240VAC	24 VAC/VDC	220~240VAC		24 VAC/VDC
Reference	Without buzzer, IP 23	XVGB2T	XVGM2T	XVGB3T	XVGM3T		-
	With buzzer, IP 23	XVGB2ST	XVGM2ST	XVGB3ST	XVGM3ST		XVGB4ST
3 With aluminium tube mounting and L-bracket							
Light source		LED for steady light					
Colors (1)		● Red	● Red, ● Green		● Red, ● Amber, ● Green		● Red, ● Amber, ● Green, ● Blue
Voltage		24 VAC/VDC	220~240VAC	24 VAC/VDC	220~240VAC	24 VAC/VDC	220~240VAC
Reference	Flashing light with buzzer	XVGB1SFA	XVGM1SFA	-	-	-	-
	Without buzzer, IP 23	XVGB1A	XVGM1A	XVGB2	XVGM2	XVGB3	XVGM3
	With buzzer, IP 23	XVGB1SA	XVGM1SA	XVGB2S	XVGM2S	XVGB3S	XVGM3S
							XVGB4
							XVGB4S
4 With aluminium tube mounting and fixing plate							
Light source		LED for steady light					
Colors (1)		● Red, ● Green	● Red, ● Amber, ● Green			● Red, ● Amber, ● Green, ● Blue	
Voltage		24 VAC/VDC	220~240VAC	24 VAC/VDC	220~240VAC		24 VAC/VDC
Reference	Without buzzer, IP 53	XVGB2H	XVGM2H	XVGB3H	XVGM3H		XVGB4H
	With buzzer, IP 42	XVGB2SH	XVGM2SH	XVGB3SH	XVGM3SH		XVGB4SH
5 With aluminium tube mounting and foldable bracket							
Light source		LED for steady light					
Colors (1)		● Red	● Red, ● Green		● Red, ● Amber, ● Green		● Red, ● Amber, ● Green, ● Blue
Voltage		24 VAC/VDC	220~240VAC	24 VAC/VDC	220~240VAC	24 VAC/VDC	220~240VAC
Reference	Flashing light with buzzer	XVGB1SM-FA	XVGM1SM-FA	-	-	-	-
	Without buzzer, IP 53	XVGB1MA	XVGM1MA	XVGB2M	XVGM2M	XVGB3M	XVGM3M
	With buzzer, IP 42	XVGB1SMA	XVGM1SMA	XVGB2SM	XVGM2SM	XVGB3SM	XVGM3SM
							XVGB4M
							XVGB4SM
6 Accessories (for association)							
Color	● White						
Unit type	Folding mounting bracket for support tube mounting				Wall mounting bracket		
Reference	XVGZ02 (2)				XVMZ02W (3)		

(1) The colors are listed in the same order as the mounting order of the illuminated units (from top to bottom).

(2) Compatible with XVGB●H, XVGB●SH, XVGB●M●, XVGB●SM●, XVGM●H, XVGM●SH, XVGM●M●, XVGM●SM.

(3) Compatible with XVGB●T, XVGB●ST, XVGM●T, XVGM●ST.

Note: Commercial references ending with "A" have shorter pole length.

Easy Harmony XA2 plastic pushbuttons



1

1 Pushbuttons with flush push, unmarked

Color		○ White	● Black	● Green	● Red	● Yellow	● Blue
Contact		NO			NC	NO	
Connection		Screw clamp terminals					
Complete product for standard mounting	Spring-return	XA2EA11	XA2EA21	XA2EA31	XA2EA42	XA2EA51	XA2EA61
	Push-push	-	XA2EH021	XA2EH031	XA2EH042	XA2EH051	-
Contact		NO+NC					
		-	XA2EA25	XA2EA35	XA2EA45	-	-
Contact		NO					
		-	-	-	XA2EA41	-	-

2 Pushbuttons with flush push, marked

Color		○ White	● Black	● Green	● Red	● Red	
Marking		A	↑	"I" (white)	"O" (white)	"STOP" (white)	
Contact		NO			NC	NC	
Connection		Screw clamp terminals					
Complete product for standard mounting		XA2EA3341	XA2EA3351	XA2EA3311	XA2EA6511	XA2EA4322	XA2EA4342



3 Trigger action Emergency stop mushroom head pushbuttons

Color		● Red				
Diameter of head		Ø 40	Ø 30	Ø 40	Ø 60	
Contact		NC Push-pull	NC Turn to release			
Connection		Screw clamp terminals				
Complete product for standard mounting		XA2ET42	XA2ES442	XA2ES542	XA2ES642	

4 Mushroom head pushbuttons, spring return

Color		● Black	● Green	● Red	
Diameter of head		Ø 40	Ø 40	Ø 40	
Contact		NO		NC	
Connection		Screw clamp terminals			
Complete product for standard mounting		XA2EC21	XA2EC31	XA2EC42	



5 Selector switches

Positions		2 ∨	2 ∇	2 ∨	3 ∨	3 ∇
Contact		NO		NO + NC	2 NO	
Connection		Screw clamp terminals				
Complete product for standard mounting	Standard handle	XA2ED21	XA2ED41	XA2ED25	XA2ED33	XA2ED53
	Long handle	XA2EJ21	-	XA2EJ25	XA2EJ33	XA2EJ53

6 Key switches

Positions		2 ∨	2 ∇	2 ∇	3 ∇	3 ∨	3 ∇
Contact		NO	2 NO				
Connection		Screw clamp terminals					
Complete product for standard mounting	Key switch (No. 455)	XA2EG21	XA2EG43	XA2EG63	XA2EG73	XA2EG33	XA2EG03

Easy Harmony XA2 plastic pushbuttons

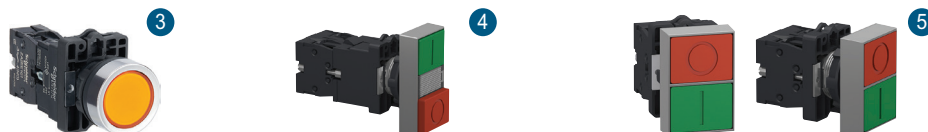


1 Pilot lights with integral LED

Color	White	Green	Red	Amber	Blue	Yellow	Bi-color(Green/Red)	
Connection	Screw clamp terminals							
Complete product for standard mounting	12 V AC/DC	XA2EVJ1LC	XA2EVJ3LC	XA2EVJ4LC	XA2EVJ5LC	XA2EVJ6LC	XA2EVJ8LC	-
	24 V AC/DC	XA2EVB1LC	XA2EVB3LC	XA2EVB4LC	XA2EVB5LC	XA2EVB6LC	XA2EVB8LC	XA2EVB34LC
	30 V AC/DC	XA2EVC1LC	XA2EVC3LC	XA2EVC4LC	XA2EVC5LC	XA2EVC6LC	XA2EVC8LC	-
	48 V AC/DC	XA2EVE1LC	XA2EVE3LC	XA2EVE4LC	XA2EVE5LC	XA2EVE6LC	XA2EVE8LC	-
	63.5 V AC/DC	XA2EVVE1LC	XA2EVVE3LC	XA2EVVE4LC	XA2EVVE5LC	XA2EVVE6LC	XA2EVVE8LC	-
	110 V AC/DC	XA2EVF1LC	XA2EVF3LC	XA2EVF4LC	XA2EVF5LC	XA2EVF6LC	XA2EVF8LC	-
	220...230 V AC	XA2EVM1LC	XA2EVM3LC	XA2EVM4LC	XA2EVM5LC	XA2EVM6LC	XA2EVM8LC	XA2EVM34LC
	220 V DC	XA2EVM1LC	XA2EVM3LC	XA2EVM4LC	XA2EVM5LC	XA2EVM6LC	XA2EVM8LC	-
	380...400 V AC	XA2EVQ1LC	XA2EVQ3LC	XA2EVQ4LC	XA2EVQ5LC	XA2EVQ6LC	XA2EVQ8LC	-

2 Indicators with Integral LEDs

Connection	Screw clamp terminals				
Type	-	Isolation switch indicator	Circuit breaker indicator	Ground Indicator	
Complete product for standard mounting	110 V AC	-	XA2EVF34SPC	XA2EVM34SPC	XA2EVQ34SPC
	220 V AC	-	XA2EVF34BPC	XA2EVM34BPC	XA2EVQ34BPC
	(Green/Red) 380 V AC	-	XA2EVF34GPC	XA2EVM34GPC	XA2EVQ34GPC



3 Illuminated pushbuttons with integral LED

Color	White	Green	Red	Yellow	Blue	Red	
Contact	NO					NC	
Connection	Screw clamp terminals						
Complete product for standard mounting	24 V AC/DC	XA2EW31B1	XA2EW33B1	XA2EW34B1	XA2EW35B1	XA2EW36B1	XA2EW34B2
	220...230 V AC	XA2EW31M1	XA2EW33M1	XA2EW34M1	XA2EW35M1	XA2EW36M1	XA2EW34M2
	380...400 V AC	XA2EW31Q1	-	-	-	-	XA2EW34Q2

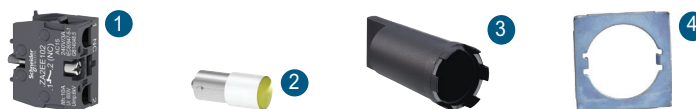
4 Double-headed pushbuttons, spring return with pilot light block

Complete product for standard mounting	24 VAC/DC	XA2EW7L3741B5
(Green/Red)	220...230 V AC	XA2EW7L3741M5

5 Double-headed pushbuttons, spring return without pilot light block

Complete product for standard mounting	XA2EA7A3415
--	-------------

Accessories for Easy Harmony XA2 plastic pushbuttons



1

1 Contact functions (for all XA2 pushbuttons and switches)

Type	Contact function	
Contact	NO	NC
Connection	Screw clamp terminals	
Reference	ZA2EE101	ZA2EE102

2 Bulbs with BA 9s base fitting and associated accessories

Color	<input type="radio"/> White	<input type="radio"/> Yellow	<input type="radio"/> Blue
Voltage	24 VAC/VDC		
Reference	DL1LED241	DL1LED245	DL1LED246

3 Bezel tool

Application	Tightening head fixing nut
Reference	ZB5AZ905

4 Anti-rotation plate

Application	Prevents head from rotation
Reference	ZB5AZ902

Easy Harmony XB2 metal pushbuttons



1 Pushbuttons with flush push, unmarked (1)

Color	<input type="radio"/> White	<input type="radio"/> Black	<input type="radio"/> Green	<input type="radio"/> Red	<input type="radio"/> Yellow	<input type="radio"/> Blue
Contact	NO			NC	NO	
Connection	Screw clamp terminals					
Complete product for standard mounting	XB2BA11C	XB2BA21C	XB2BA31C	XB2BA42C	XB2BA51C	XB2BA61C

2 Pushbuttons with flush push, marked (1)

Color	<input type="radio"/> White	<input type="radio"/> Black	<input type="radio"/> Green	<input type="radio"/> Red
Marking	"Arrow"	"Arrow"	"I" (white)	"O" (white)
Contact	NO			
Connection	Screw clamp terminals			
Complete product for standard mounting	XB2BA3341C	XB2BA3351C	XB2BA3311C	XB2BA4322C

3 Pushbuttons with projecting push, unmarked (1)

Color	<input type="radio"/> Green	<input type="radio"/> Red
Contact	NO	NC
Connection	Screw clamp terminals	
Complete product for standard mounting	XB2BL31C	XB2BL42C



1 Pushbuttons with booted push, unmarked (1)

Color	<input type="radio"/> Black	<input type="radio"/> Green	<input type="radio"/> Red
Contact	NO		NC
Connection	Screw clamp terminals		
Complete product for standard mounting	XB2BP21C	XB2BP31C	XB2BP42C

2 Mushroom head pushbuttons, spring return (1)

Color	<input type="radio"/> Black	<input type="radio"/> Green	<input type="radio"/> Red	<input type="radio"/> Yellow	<input type="radio"/> Black
Diameter of head	Ø 40			Ø 60	
Contact	NO		NC	NO	
Connection	Screw clamp terminals				
Complete product for standard mounting	XB2BC21C	XB2BC31C	XB2BC42C	XB2BC51C	XB2BR21C



1 Emergency stop pushbuttons (1)(2)

Color	<input type="radio"/> Red	
Diameter of head	Ø 40	
Contact	NC Push -pull	NC Turn to release
Connection	Screw clamp terminals	
Complete product for standard mounting	XB2BT842C	XB2BS8442C

2 Emergency switch off pushbuttons (1)

Color	<input type="radio"/> Red			
Diameter of head	Ø 40	Ø 30	Ø 40	Ø 60
Contact	NC Push -pull	NC Turn to release		
Connection	Screw clamp terminals			
Complete product for standard mounting	XB2BT42C	XB2BS442C	XB2BS542C	XB2BS642C

(1) This product line will be available starting in Q3 2023.

(2) Emergency stop pushbuttons should have a maximum of 4 numbers of contact blocks, installed in 2 rows only.

Easy Harmony XB2 metal pushbuttons



Selector switches (1)

Positions	2	2	3	3	2			
Contact	NO	NO + NC	NO	NO + NC	2 NO			
Connection	Screw clamp terminals							
Complete product for standard mounting	1 Standard handle	XB2BD21C	XB2BD25C	XB2BD41C	XB2BD45C	XB2BD33C	XB2BD53C	XB2BD73C
	2 Long handle	XB2BJ21C	XB2BJ25C	-	-	XB2BJ33C	XB2BJ53C	-

3 Key switches (No. 455) (1)

Positions	2	2	2	3	3	3	
Connection	Screw clamp terminals						
Complete product for standard mounting	NO	XB2BG21C	XB2BG41C	XB2BG61C	-	-	-
	2 NO	-	-	-	XB2BG33C	XB2BG53C	XB2BG03C
	NO + NC	XB2BG25C	XB2BG45C	XB2BG65C	-	-	-



Illuminated pushbuttons with integral LED (1)

Color	White	Green	Red	Yellow	Blue	
Contact	NO					
Connection	Screw clamp terminals					
Complete product for standard mounting	1 24 V AC/DC	XB2BW31B1C	XB2BW33B1C	XB2BW34B1C	XB2BW35B1C	XB2BW36B1C
	2 220...230 V AC	XB2BW31M1C	XB2BW33M1C	XB2BW34M1C	XB2BW35M1C	XB2BW36M1C



Joysticks

Return type	Spring return	Stay
2 Directions	XD2PA22CR	XD2PA12CR
4 Directions	XD2PA24CR	XD2PA14CR



Buzzers

Characteristics	Non-illuminated 1	Illuminated 2
24 V AC/DC	XB2BSBC	XB2BSB4LC
220...230 V AC	XB2BSMC	XB2BSM4LC

(1) This product line will be available starting in Q3 2023.

Note: For illuminated pilot lights, please refer to Easy Harmony XA2 range.

Easy Harmony XB2 metal pushbuttons



1 Pushbutton heads with flush push, unmarked

Color	○ White	● Black	● Green	● Red	● Yellow	● Blue
Push button Head for standard mounting	ZB2BA1C	ZB2BA2C	ZB2BA3C	ZB2BA4C	ZB2BA5C	ZB2BA6C

2 Pushbutton heads with flush push, marked

Color	○ White	● Black	● Green	● Red	● Blue	
Marking	"Arrow" (black)	"Arrow"	"I"	"O"	"STOP"	"Double arrow"
Push button Head for standard mounting	ZB2BA334C	ZB2BA335C	ZB2BA331C	ZB2BA432C	ZB2BA434C	ZB2BA651C

3 Pushbutton heads with projecting push, unmarked

Color	● Black	● Green	● Red	● Yellow
Push button Head for standard mounting	ZB2BL2C	ZB2BL3C	ZB2BL4C	ZB2BL5C

4 Pushbutton head with projecting push, marked

Color	● Red
Push button Head for standard mounting	ZB2BL432C



1 Pushbutton heads with booted push, unmarked

Color	● Black	● Green	● Red	● Yellow	● Blue
Push button Head for standard mounting	ZB2BP2C	ZB2BP3C	ZB2BP4C	ZB2BP5C	ZB2BP6C

2 Mushroom pushbutton heads, spring return

Color	● Black	● Green	● Red	● Yellow	● Blue	
Push button Head for standard mounting	Ø 40	ZB2BC2C	ZB2BC3C	ZB2BC4C	ZB2BC5C	ZB2BC6C
	Ø 60	ZB2BR2C	ZB2BR3C	ZB2BR4C	-	-



1 Emergency stop pushbutton heads (1)

Color	● Red	
Diameter of head	Ø 40	
Release type	Push-pull	Turn to release
Push button head for standard mounting	ZB2BT84C	ZB2BS844C

2 Emergency switch off pushbutton heads

Color	● Red	● Yellow	● Black	● Red		
Diameter of head	Ø 40	Ø 30		Ø 40	Ø 60	
Release type	Push-pull	Turn to release				
Push button head for standard mounting	ZB2BT4C	ZB2BT5C	ZB2BS42C	ZB2BS44C	ZB2BS54C	ZB2BS64C

(1) Emergency stop pushbuttons should have a maximum of 4 numbers of contact blocks, installed in 2 rows only.

Easy Harmony XB2 metal pushbuttons



Selector switch heads

Positions		2 ∨	2 ∩	3 ∨	3 ∩	3 ∩
Complete product for standard mounting	1 Standard handle	ZB2BD2C	ZB2BD4C	ZB2BD3C	ZB2BD5C	ZB2BD7C
	2 Long handle	ZB2BJ2C	ZB2BJ4C	ZB2BJ3C	ZB2BJ5C	ZB2BJ7C

3 Key switch heads (No. 455)

Positions		2 ∨	2 ∩	2 ∩	3 ∨	3 ∩	3 ∩
Selector switch head for standard mounting		ZB2BG2C	ZB2BG4C	ZB2BG6C	ZB2BG3C	ZB2BG5C	ZB2BG0C



1 Illuminated pushbutton heads with flush push

Color		○ White	● Green	● Red	● Orange	● Blue
Push button head for standard mounting		ZB2BW31C	ZB2BW33C	ZB2BW34C	ZB2BW35C	ZB2BW36C

2 Illuminated pushbutton heads with projecting push

Color		○ White	● Green	● Red
Push button head for standard mounting		ZB2BW11C	ZB2BW13C	ZB2BW14C



Contact block sub-assemblies

Contact		1 NO	1 NC	2 NO	2 NC	1 NO + 1 NC
Connection		Screw clamp terminals				
1 With fixing collar		ZB2BZ101C	ZB2BZ102C	ZB2BZ103C	ZB2BZ104C	ZB2BZ105C
2 No fixing collar		ZB2BE101C	ZB2BE102C	-	-	-



1 Illuminated contact block sub-assemblies, BA9S bulb base with LED bulb

Color		● White	● Green	● Red	● Orange	● Blue
Connection		Screw clamp terminals				
24V AC/DC	1 NO	ZB2BWB11C	ZB2BWB31C	ZB2BWB41C	ZB2BWB51C	ZB2BWB61C
	1 NC	-	ZB2BWB32C	ZB2BWB42C	ZB2BWB52C	-
220-230V AC	1 NO	ZB2BWM11C	ZB2BWM31C	ZB2BWM41C	ZB2BWM51C	ZB2BWM61C
	1 NC	-	ZB2BWM32C	ZB2BWM42C	ZB2BWM52C	-

2 Illuminated contact block sub-assemblies, BA9S bulb base without bulb

Contact		NO	NC	2 NO	NO + NC	
Connection		Screw clamp terminals				
<380V AC direct		ZB2BW061C	ZB2BW062C	ZB2BW063C	ZB2BW065C	

Easy Harmony XB2 metal pushbuttons



Push-push module (1)

Push button convertor	ZB2BZ21C
-----------------------	----------



BA9S LED bulbs

Color	<input type="radio"/> White	<input checked="" type="radio"/> Green	<input type="radio"/> Red	<input type="radio"/> Orange	<input type="radio"/> Blue
Connection	Screw clamp terminals				
24V AC/DC (2)	DL1-LED241	DL1-LED243	DL1-LED244	-	-
110V AC/DC	DL1-LED1101	DL1-LED1103	DL1-LED1104	DL1-LED1105	DL1-LED1106
220V AC/DC	-	DL1-LED2203	DL1-LED2204	DL1-LED2205	DL1-LED2206

(1) Component to install before contact blocks, to convert spring return connection to push-push connection.

(2) 24V AC/DC bulbs are sold in lots of 10.

Accessories for Easy Harmony XB2 metal pushbuttons



1

2

EMERGENCY STOP

1 Empty Legend holders (1)

Size	30 x 40 mm	30 x 50 mm
Suitable for legend plate size	8 x 27 mm	18 x 27 mm
Reference	ZB2BZ32C	ZB2BZ33C

2 Legend plates (1)

Marking	"STOP"	"ON"	"OFF-ON"	"EMERGENCY STOP"	"OFF-ON"	Unmarked
Size	8 x 27 mm			18 x 27 mm		
Color	<input checked="" type="radio"/> Red	<input checked="" type="radio"/> Black		<input checked="" type="radio"/> Yellow	<input checked="" type="radio"/> Black	<input type="radio"/> White
Reference	ZBY02304C	ZBY02311C	ZBY02367C	ZBY04330C	ZBY502367C	ZBY5102C



3



4



5

3 Emergency stop legend (1)

Application	Legend for emergency stop push button
Reference	ZB2BY9330C

4 Emergency stop guard

Application	Guard for dia 40mm emergency stop push button
Reference	ZB2BZ1605C

5 Dust protection boot (1)

Application	Dust protection cap
Reference	ZB2BPAC

(1) Sold in lots of 10.



02. Easy Harmony ET6

Easy Harmony ET6 Essential Touch-screen Panels



Easy Harmony ET6 SIO models with IP65 degree of protection

Screen size	7" ¹	10.1" ²
Screen resolution (pixels)	800 x 480 WVGA	1024 x 600 WSVGA
Touch screen or keypad	Touch screen	
Software	Vijeo Designer Basic V1.2 or above	
Memory capacity	User data memory	256 MB (for system data , screen data and logging data storage)
	Backup memory	128 KB
	Local logging data storage	max. 32MB
Communication	Serial line	9-way male SUB-D, RS-232C (COM1) + 9-way male SUB-D, RS-422/RS485 (COM2)
	USB connection	1 micro-B connector
Operating temperature	0...50 °C	
Industrial certifications	CE, UL/cUL 61010-2-201, KC, EAC, UKCA, RCM, European RoHS/China RoHS, REACH, WEEE	
Cut-out (mm)	190 x 135	255 x 185
Dimensions (mm)	205.5 x 150.5 x 45	270.5 x 200.5 x 47
Reference	HMIET6401	HMIET6501



Easy Harmony ET6 ETH models with IP65 degree of protection

Screen size	7" ³	10.1" ⁴	12.1" ⁵	15.6" ⁶
Screen resolution (pixels)	800 x 480 WVGA	1024 x 600 WSVGA	1280 x 800 WXGA	1366 x 768 FWXGA
Touch screen or keypad	Touch screen			
Software	Vijeo Designer Basic V1.2 or above			
Memory capacity	User data memory	256 MB (for system data , screen data and logging data storage)		
	Backup memory	128 KB		
	Local logging data storage	max. 32MB		
Communication	Ethernet port	Ethernet 10/100BASE-TX		
	Serial line	9-way male SUB-D, RS-232C (COM1) + 9-way male SUB-D, RS-422/RS485 (COM2)		
	USB connection	1 type A connector + 1 micro-B connector		
Operating temperature	0...50 °C			
Industrial certifications	CE, UL/cUL 61010-2-201, KC, EAC, UKCA, RCM, European RoHS, China RoHS, REACH, WEEE			
Cut-out (mm)	190 x 135	255 x 185	295 x 217	394 x 250
Dimensions (mm)	205.5 x 150.5 x 45	270.5 x 200.5 x 47	310.5 x 232.5 x 50	412 x 268 x 50
Reference	HMIET6400	HMIET6500	HMIET6600	HMIET6700

Easy Harmony ET6 - Programming Software and Accessories



Vijeo Designer Basic, programming software for Easy Harmony ET6 panels

Compatibility	All Easy Harmony ET6 panels (required V1.2 or above)
Type of Vijeo Designer license	Single-station Build Time
Number of stations	1
Type of support	DVD
License duration	Unlimited
Reference	To download this software, visit Schneider Electric web site, Vijeo Designer Basic

2



Spare parts

Description	Power supply connector (5 pieces/set)
Compatibility	All Easy Harmony ET6
Reference	HMIZGPWS1



Connection accessories

Connection type	1 USB micro-B connector (male) + 1 USB micro-B connector (female) ¹	1 USB type A connector (male) + 1 USB type A connector (female) ²
Description	Extension cable that attaches USB (micro-B) interface to the front panel of the cabinet	Extension cable that attaches USB (type A) interface to the front panel of the cabinet
Cable length (m)	1	1.8
Reference	HMIZSUSBB2	XBTZGUSB



Cables for connecting Easy Harmony ET6 panels to Schneider Electric products

Range compatibility	Modicon M221, M241, M251, M262, M340, M218, M238, M258	TeSys U/T starters, Altivar drives, Altistart starters, Lexium motion control, Preventa XPS MC
Connection type	1 male connector RJ45 + 1 female connector 9-way Sub-D	1 male connector RJ45 + 1 female connector 9-way Sub-D
Interface	RS 485	
Communication protocol	-	Modbus
Compatibility	All Easy Harmony GXU panels	
Cable length (m)	2.5	
Reference	XBTZ9008	XBTZ9008

Easy Harmony ET6 - Accessories



Cables for third-party PLCs

Third-party PLCs	Customizable cables
Compatibility	All Easy Harmony ET6 models
Connection cable	RS 422
Connection type	9-way SUB-D/flying leadsat other end ¹
Interface	RS 422
Cable length (m)	5
Reference	XBTZG9722

Connecting Easy Harmony ET6 panels via Modbus serial link

Description	Modbus serial link	Power supply connector
Compatibility	All Easy Harmony ET6 models	
Tap-off units	8-port Modbus splitter box LU9GC32-porttap junctionTWDXCAISO, and TWDXCAT3RJ	
Communication protocol	Modbus	
Connection type	1 male connector RJ45/9-way SUB-D ²	
Interface	RS 485	
Cable length (m)	2.5	
Reference	XBTZ9008	

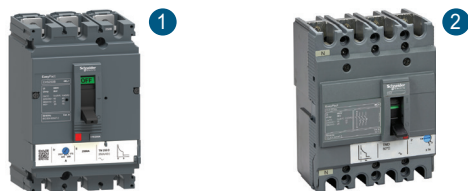
(1) Customized cable with Siemens PB connector 6ES7972-0Bx12-0XA0.

2

A modern glass skyscraper at dusk, with a green-tinted foreground. The building's glass facade reflects the sky and surrounding environment. A green-tinted foreground shows a walkway and some trees. The overall scene is a high-angle, low-perspective shot of a modern architectural structure.

03. EasyPact protection of distribution system

EasyPact CVS100/160/250 - complete fixed/FC device



EasyPact CVS100/160/250B, 25 kA 380/415 V - With TM-D thermal-magnetic trip unit

EasyPact CVS100B (25 kA at 380/415 V)

Rating		TM16D	TM25D	TM32D	TM40D	TM50D	TM63D	TM80D	TM100D
Poles	3P 3d ¹	LV510300	LV510301	LV510302	LV510303	LV510304	LV510305	LV510306	LV510307
	4P 3d ²	LV510310	LV510311	LV510312	LV510313	LV510314	LV510315	LV510316	LV510317

EasyPact CVS160B (25 kA at 380/415 V)

Rating		TM100D	TM125D	TM165D
Poles	3P 3d ¹	LV516301	LV516302	LV516303
	4P 3d ²	LV516311	LV516312	LV516313

EasyPact CVS250B (25 kA at 380/415 V)

Rating		TM200D	TM250D
Poles	3P 3d ¹	LV525302	LV525303
	4P 3d ¹	LV525312	LV525313

EasyPact CVS 100/160/250F, 36kA at 380/415 V - With MA magnetic trip unit

EasyPact CVS 100F (36 kA at 380/415 V)

Rating		MA2.5	MA6.3	MA12.5	MA25	MA50	MA100
Poles	3P 3d	LV510440	LV510441	LV510442	LV510443	LV510444	LV510445

EasyPact CVS 160F (36 kA at 380/415 V)

Rating		MA100	MA150
Poles	3P 3d	LV516439	LV516440

EasyPact CVS 250F (36 kA at 380/415 V)

Rating		MA150	MA220
Poles	3P 3d	-	LV525439

(1) Supplied with 2 or 3 interphase barriers.



Find more details and other references in the [EasyPact CVS catalog](#)

EasyPact CVS100/160/250 - Accessories



Connection accessories (Cu or Al)

Description	Bare cable connectors, steel ¹		Aluminium connectors ²				Aluminium connectors for 2 cables (1) ³	
	1 x (1.5 to 95 mm ²) ; ≤ 160 A		1 x (25 to 95 mm ²) ; ≤ 250 A		1 x (120 to 185 mm ²) ; ≤ 250 A		2 x (50 to 120 mm ²) ; ≤ 250 A	
	Set of 3	Set of 4	Set of 3	Set of 4	Set of 3	Set of 4	Set of 3	Set of 4
Reference	LV429242	LV429243	LV429227	LV429228	LV429259	LV429260	LV429218	LV429219



Description	Spreaders from 35 to 45 mm pitch (1) ⁴	
	Set of 3	Set of 4
Reference	LV431563	LV431564



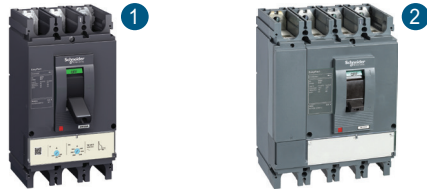
Description	Insulation accessories					
	1 short terminal shield for breaker ⁵		1 long terminal shield for breaker ⁶		Interphase barriers for breaker ⁷	2 insulating screens for breaker (45 mm pitch) ⁸
	3 P	4 P	3 P	4 P	Set of 6	3 P 4 P
Reference	LV429515	LV429516	LV429517	LV429518	LV429329	LV429330 LV429331



Rotary handles	
Description	Direct rotary handle - With black handle ⁹
Reference	LV429337
Description	Extended rotary handle - With black handle ¹⁰
Reference	LV429338

(1) Supplied with 2 or 3 interphase barriers.

EasyPact CVS400/630 - complete fixed/FC device



EasyPact CVS400/630F - With TM-D thermal-magnetic trip unit

Type	EasyPact CVS400F (36 kA at 380/415 V)		EasyPact CVS630F (36 kA at 380/415 V)	
Rating	TM320D		TM400D	TM500D
Poles	3P 3d (1)	LV540305	LV540306	LV563305
	4P 3d (2)	LV540308	LV540309	LV563308
			LV563309	LV563309

EasyPact CVS400/630F/N - With MA magnetic trip unit

Type	EasyPact CVS400F (36 kA at 380/415 V)	EasyPact CVS400N (50 kA at 380/415 V)	EasyPact CVS630F (36 kA at 380/415 V)	EasyPact CVS630N (50 kA at 380/415 V)
Rating	MA320	MA320	MA500	MA500
Poles	3P 3d	LV540550	LV540552	LV563550
				LV563552

EasyPact CVS400/630F - ETS 2.3 electronic trip unit (LS₀I protection)

Type	EasyPact CVS400F (36 kA at 380/415 V) - 400 A		EasyPact CVS630F (36 kA at 380/415 V) - 630 A	
Poles	3P 3d (1)	LV540505	LV563505	
	4P 3d, 4d, 3d + N/2 (2)	LV540506	LV563506	



EasyPact CVS400/630 - Accessories



Connection accessories (Cu or Al)

Description	Aluminium connector (3) 1x (35 to 300 mm ²)		Aluminium connector (4) 2x (35 to 240 mm ²)		Voltage plug for aluminium connector 1 or 2 cables (5)
	Set of 3	Set of 4	Set of 3	Set of 4	Set of 10
Reference	LV432479	LV432480	LV432481	LV432482	LV429348



Description	Spreaders (6)			
	52.5 mm		70 mm	
	3P	4P	3P	4P
Reference	LV432490	LV432491	LV432492	LV432493



Description	Insulation accessories								
	Short terminal shield, 45 mm (1 piece) (7)		Long terminal shield, 45 mm (1 piece) (8)		Interphase barriers (9)	Long terminal shielded for spreaders, 52, 5mm (1 piece) (supplied with insulating plate) (10)		2 insulating screens (70 mm pitch) (11)	
	3 P	4 P	3 P	4 P	Set of 6	3 P	4 P	3 P	4 P
Reference	LV432591	LV432592	LV432593	LV432594	LV432570	LV432595	LV432596	LV432578	LV432579



Rotary handles

Description	Direct rotary handle - With standard black handle (12)	Standard extended rotary handle (13)
Reference	LV432597	LV432598

(1) Supplied with 2 or 3 interphase barriers.



04. Easy TeSys motor control and protection

Easy TeSys TVS 3-pole contactors from 6 to 630 A



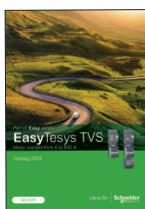
Easy TeSys Control - 3-pole contactors											
Size	1 ①					2 ②		3 ③			
Rated operational current AC-3 (A) (1)	6	9	12	18	25	32	38	40	50	65	
Rated operational current AC-1 (A) (2)	20	25		32	36	50		60	70	80	
Rated operational power in AC-3 (kW)	220/230 V	1.1	2.2	3	4	5.5	7.5	9	11	15	18.5
	380/400 V	2.2	4	5.5	7.5	11	15	18.5	18.5	22	30
	415/440 V	2.2	4	5.5	9	11	15	18.5	22	25/30	37
	500 V	3	5.5	7.5	10	15	18.5	18.5	22	30	37
660/690 V	3	5.5	7.5	10	15	18.5	18.5	30	33	37	
Width (mm)	45					45.5	56	75			
Coil rated operating voltage	24...440 V AC according to the coil voltage code (see below table)										
Auxiliary built in contact	1 NO or 1 NC							1 NO + 1 NC			
Reference	LC1E06	LC1E09	LC1E12	LC1E18	LC1E25	LC1E32	LC1E38	LC1E40	LC1E50	LC1E65	



Size	4 ④		5 ⑤		6 ⑥		7 ⑦		8 ⑧		9 ⑨
Rated operational current AC-3 (A) (1)	80	95	120	160	200	250	300	400	500	630	
Rated operational current AC-1 (A) (2)	110	120	150	200	250	300	320	500	700	1000	
Rated operational power in AC-3 (kW)	220/230 V	22	25	37	45	55	75	90	110	147	185
	380/400 V	37	45	55	75	90	132	160	200	250	335
	415/440 V	45	45	59	80	100	140	160/185	220/250	280/295	375/400
	500 V	45	55	75	90	110	160	200	257	355	400
660/690 V	45	45	80	100	110	160	220	280	335	450	
Width (mm)	85		120		168.5		213		233		309
Coil rated operating voltage	24...440 V AC according to the coil voltage code (see below table)										
Auxiliary built in contact	1 NO + 1 NC					-					
Reference	LC1E80	LC1E95	LC1E120	LC1E160	LC1E200	LC1E250	LC1E300	LC1E400	LC1E500	LC1E360	LC1E630

(1) Class AC-3: squirrel-cage motors with breaking taking place with the motor running.

(2) Class AC-1: AC loads with $\cos \phi$ at least equal to 0.95 (resistive load, heating, distribution, etc.).



Find more details and other references in the [EasyTeSys TVS catalog](#)

Easy TeSys Power - Motor circuit-breaker



Environment		GZ1	
Circuit-breaker type		IEC 60947-2, IEC 60947-4	
Conforming to standards		IEC 60068-2-30 Test Db, Variant 2	
Protective treatment	Conforming to IEC 60068-2-30	In GV2 MC01 enclosure: IP 41 In GV2 MC02 enclosure: IP 55	
Degree of protection			
Ambient air temperature	Storage	°C	- 40...+ 80
	Operation	°C	- 20...+ 60
Flame resistance	Conforming to IEC 60695-2-1		960
Maximum operating altitude		m	2000
Cabling Number of conductors and c.s.a.	Solid cable	mm ²	Min. 2 x 1 Max. 2 x 6
	Flexible cable without cable end	mm ²	2 x 1.5 2 x 6
	Flexible cable with cable end	mm ²	2 x 1 2 x 4
	Conforming to IEC 60947-1 § 7-1-6		Yes
Suitable for isolation			Yes
Tightening torque		N.m	1.7
Rated operational voltage (Ue)	Conforming to IEC 60947-2	V	690
Rated insulation voltage (Ui)	Conforming to IEC 60947-2	V	690
Rated operational frequency	Conforming to IEC 60947-2	Hz	50/60
Rated impulse withstand voltage (U imp)	Conforming to IEC 60947-2	kV	6
Total power dissipated per pole		W	2.5
Mechanical durability (C.O.: closing, opening)		C.O.	100 000
Electrical durability (For AC-3 duty)		C.O.	100 000
Duty class (maximum operating rate)		C.O./h	25

Breaking Capacity		GZ1														
Circuit-breaker type		GZ1														
Rating		GZ1														
Breaking capacity conforming to IEC 60947-2		230/240 V	400/415 V	440 V	500 V	690 V	A	01 to 06 0.1 to 1.6	07 2,5	08 4	10 6.3	14 10	16 14	20 18	21 23	22 to 32 25 to 32
Icu	Ics % (1)	■	■	■	■	■	■	■	■	■	■	■	■	■	■	■
		■	■	■	■	■	■	■	■	■	■	■	■	■	■	■
Icu	Ics % (1)	■	■	■	■	■	■	■	■	■	■	■	■	■	■	■
		■	■	■	■	■	■	■	■	■	■	■	■	■	■	■
Icu	Ics % (1)	■	■	■	■	■	■	■	■	■	■	■	■	■	■	■
		■	■	■	■	■	■	■	■	■	■	■	■	■	■	■
Icu	Ics % (1)	■	■	■	■	■	■	■	■	■	■	■	■	■	■	■
		■	■	■	■	■	■	■	■	■	■	■	■	■	■	■
Icu	Ics % (1)	■	■	■	■	■	■	■	■	■	■	■	■	■	■	■
		■	■	■	■	■	■	■	■	■	■	■	■	■	■	■
Icu	Ics % (1)	■	■	■	■	■	■	■	■	■	■	■	■	■	■	■
		■	■	■	■	■	■	■	■	■	■	■	■	■	■	■

■ > 100 kA. (1) As % of Icu.

Motor Circuit-breakers - Magnetic only									
Pushbutton control									
Standard power ratings of 3-phase motors 50/60 Hz in category AC-3/AC-3e					Magnetic protection rating	Magnetic tripping current Id ± 20 %	Use in association with thermal overload relays	Reference	Weight
230V	400V	440V	500V	690V	A	A	(Class 10A)		kg
kW	kW	kW	kW	kW	A	A	(Class 10A)		kg
—	—	—	—	—	0.40	5.8	LRE03	GZ1LE03	0.250
—	—	—	—	0.37	0.63	9.3	LRE04	GZ1LE04	0.250
—	—	—	0.37	0.55	1	15.1	LRE05	GZ1LE05	0.250
—	0.37	0.55	0.75	1.1	1.6	26.2	LRE06	GZ1LE06	0.250
0.37	0.75	1.1	1.1	1.5	2.5	39	LRE07	GZ1LE07	0.250
0.75	1.5	1.5	2.2	3	4	74	LRE08	GZ1LE08	0.250
1.1	2.2	3	3.7	4	6.3	91	LRE10	GZ1LE10	0.250
2.2	4	4	5.5	7.5	10	149	LRE14	GZ1LE14	0.250
—	5.5	5.5	9	11	14	253.4	LRE16	GZ1LE16	0.250
4	7.5	9	10	15	18	341	LRE21	GZ1LE20	0.250
5.5	11	11	15	22	25	388.3	LRE22	GZ1LE22	0.250
7.5	15	15	18.5	22	32	538	LRE32	GZ1LE32	0.250

Motor Circuit-breakers - Thermal-magnetic									
Pushbutton control									
Standard power ratings of 3-phase motors 50/60 Hz in category AC-3/AC-3e					Setting range of thermal trips	Magnetic tripping current Id ± 20 %	Reference	Weight	
230V	400V	440V	500V	690V	A	A		kg	
kW	kW	kW	kW	kW	A	A		kg	
—	—	—	—	—	0.1...0.16	1.9	GZ1E01	0.260	
—	—	—	—	—	0.16...0.25	3.1	GZ1E02	0.260	
—	—	—	—	—	0.25...0.40	5.8	GZ1E03	0.260	
—	—	—	—	0.37	0.40...0.63	9.3	GZ1E04	0.260	
—	—	—	0.37	0.55	0.63...1	15.1	GZ1E05	0.260	
—	0.37	0.55	0.75	1.1	1...1.6	26.2	GZ1E06	0.260	
0.37	0.75	1.1	1.1	1.5	1.6...2.5	39	GZ1E07	0.260	
0.75	1.5	1.5	2.2	3	2.5...4	74	GZ1E08	0.260	
1.1	2.2	3	3.7	4	4...6.3	91	GZ1E10	0.260	
2.2	4	4	5.5	7.5	6...10	149	GZ1E14	0.260	
—	5.5	5.5	9	11	9...14	253.4	GZ1E16	0.260	
4	7.5	9	10	15	13...18	341	GZ1E20	0.260	
5.5	9	11	11	18.5	17...23	341	GZ1E21	0.260	
5.5	11	11	15	22	20...25	388.3	GZ1E22	0.260	
7.5	15	15	18.5	22	24...32	538	GZ1E32	0.260	

Commercial reference numbering system

EasyTeSys TVS 3-pole contactors - Commercial reference numbering system

LC1E ●●● ●●● ●●

Frequency	Code
50 Hz	5
60 Hz	6
50/60 Hz	7

Coil voltage (1)	Code
24 V	B
48 V	E
110 V	F
220 V	M
230 V	P
240 V	U
380 V	Q
400 V	V
415 V	N
440 V	R

Rated operation current (AC3)	Auxiliary contact configuration	Code
EasyTeSys TVS 3-pole		
06...38	1NO (or 1 NC)	10 (or 01)
40...160	1NO+1NC	none
200...630	No auxiliary contact	none

Rated operation current (AC3)	Main contact	Code
EasyTeSys TVS 4-pole		
06...95	4 NO	004
06...95	2 NO + 2 NC	008

Rated operation current (AC3)	Code
EasyTeSys TVS 3-pole	
06...630	06...630
EasyTeSys TVS 4-pole	
06...95	06...95

Type	Designation
Contacteur	EasyPact TVS

4

Contacteur: how to determine the full commercial reference ?

Example 1: you need a 32 A contactor, 1 NC auxiliary contact, 24 V - 50 Hz, coil ⇒ **LC1E3201B5**

Example 2: you need a 120 A contactor, 1 NC + NO auxiliary contact, 220 V - 50 Hz, coil ⇒ **LC1E120M5**

Available coil voltage code for 3-pole contactors

		24	48	110	220	230	240	380	415	440
LC1E06-300	50 Hz	B5	E5	F5	M5	–	U5	Q5	N5	R5
	60 Hz	B6	–	F6	M6	–	–	Q6	–	R6
LC1E06-95	50/60Hz	B7	E7	F7	M7	P7	–	Q7	–	–
LC1E400-630	50/60Hz	–	E7	F7	M7	–	U7	Q7	N7	–

Contacteur: how to determine the full commercial reference ?

Example:

LC1E 12 10 U 5

5	ref. LC1E1210U5
Coil voltage code	240 V
Auxiliary contact configuration (2)	01 1NC 10 1NO
Rated operation current AC3	12 A
Contacteur	EasyPact TVS

(1) For 3-pole contactors, please refer the previous page.

(2) Example up to LC1E38 For details, please see above table.

Easy TeSys Control Contactors - 3 pole from 6 A to 630 A

Power Characteristics

4

Power Circuit Connections				LC1E06	LC1E09	LC1E12	LC1E18	LC1E25	LC1E32	LC1E38	LC1E40	LC1E50	LC1E65		
Contactor type				3											
Number of poles				3											
Rated operational current (Ie) (Ue ≤ 440 V)	In AC-3/AC-3e (θ ≤ 55°C)	A	A	6	9	12	18	25	32	38	40	50	65		
	In AC-3 (θ ≤ 55°C)			20	25		32	36	50		60	70	80		
	In AC-1 (θ ≤ 55°C)			–											
	In AC-1 (θ ≤ 40°C)			–											
Rated operational voltage (Ue)		Up to	V	690											
Frequency limits of the operational current				50 or 60											
Conventional thermal current (Ith)	θ ≤ 55°C	A	A	20	25		32	36	50		60	70	80		
	θ ≤ 40°C			–											
Rated breaking capacity at 440 V Conforming to IEC 60947			A	48	72	96	144	200	256	304	320	400	520		
Rated making capacity at 440 V Conforming to IEC 60947-4-1			A	60	90	120	180	250	320	380	400	500	650		
Permissible short time rating No current flowing for preceding 15 minutes with θ ≤ 40°C	10 s	A	A	80	105		145	240	260	310	320	400	520		
	1 min			45	61		84	120	138	150	165	208	260		
	10 min			20	30		40	50	60		72	84	110		
Maximum permissible current No current flowing for previous 60 minutes, at θ ≤ 40°C		For 10 s	A	–											
Protection by fuses against short-circuits (U ≤ 690 V)	Without thermal overload relay gG fuse	Type 1	A	12	20	25	35	40	63		80	100	125		
	With thermal overload relay			For corresponding aM or gG fuse ratings corresponding to the associated LRE thermal overload relay, EasyTeSys TVS thermal overload relays											
Average impedance per pole		At Ith and 50 Hz	mΩ	2.5				2.5			1.5		1		
Power dissipation per pole for the above operational currents	AC-3	W	W	0.09	0.20	0.36	0.81	1.6	2.0	2.9	2.4	3.8	4.2		
	AC-1			1.0	1.6		2.6	3.2	5.0		5.4	7.4	6.4		
Electrical durability	AC-3 (Ue ≤ 440 V)	Million cycles	cycles	1.4			1.2		1		0.9				
	AC-1 (Ue ≤ 440 V)			0.15		0.3		0.35							
Mechanical durability				10				8			5				
Power Circuit Connections															
Connection maximum c.s.a.															
Flexible cable with cable end	1 conductor	mm ²	mm ²	1...4				1...6			2.5...25				
	2 conductors			1...2.5				1...4			2.5...10				
Flexible cable without cable end	1 conductor	mm ²	mm ²	1...4			1.5...6		1.5...10			2.5...25			
	2 conductors			1...4			1.5...6		1.5...6			2.5...16			
Solid cable without cable end	1 conductor	mm ²	mm ²	1...4			1.5...6		1.5...10			2.5...25			
	2 conductors			1...4			1.5...6		1.5...6			2.5...16			
Cable with lug			mm	–											
Bar		Number of bars		–											
		Bar	mm x mm	–											
Bolt diameter		1 conductor	mm	–											
Tightening torque		Power circuit connection	N.m	1.2				1.5		2.1		5			
Tool				Philips N°2 or Ø6mm flat						Ø8mm flat					

Easy TeSys Control Contactors - 3 pole from 6 A to 630 A

Power Characteristics

Power Circuit Connections				LC1E80	LC1E95	LC1E120	LC1E160	LC1E200	LC1E250	LC1E300	LC1E400	LC1E500	LC1E630	
Contactor type														
Number of poles														
Rated operational current (Ie) (Ue ≤ 440 V)	In AC-3/AC-3e (θ ≤ 55°C)	A	80	95	–									
	In AC-3 (θ ≤ 55°C)				120	160	200	250	300	400	500	630		
	In AC-1 (θ ≤ 55°C)		110	120	–									
	In AC-1 (θ ≤ 40°C)				150	200	250	300	320	500	700	1000		
Rated operational voltage (Ue)		Up to	V											
Frequency limits of the operational current			Hz											
			50 or 60											
Conventional thermal current (Ith)	θ ≤ 55°C	A	110	120	–									
	θ ≤ 40°C				150	200	250	300	320	500	700	1000		
Rated breaking capacity at 440 V Conforming to IEC 60947			A	640	760	960	1280	1600	2000	2400	3200	4000	5040	
Rated making capacity at 440 V Conforming to IEC 60947-4-1			A	800	950	1200	1600	2000	2500	3000	4000	5000	6300	
Permissible short time rating No current flowing for preceding 15 minutes with θ ≤ 40°C	10 s	A	640	800	950	1200	1500	1800	2650	3600	4200	5050		
	1 min		320	400	550	580	740	850	1300	1700	2400	3400		
	10 min		135		250	250	400	440	750	1000	1200	1600		
Maximum permissible current No current flowing for previous 60 minutes, at θ ≤ 40°C			For 10 s	A		1100	1400	1500	1800	2200	3600	4200	5050	
Protection by fuses against short-circuits (U ≤ 690 V)	Without thermal overload relay gG fuse	Type 1	A	160		250	315			500	630	800	800	
	With thermal overload relay			–										
Average impedance per pole		At Ith and 50 Hz	mΩ											
			0.8		0.6		0.33	0.32	0.3	0.26	0.18	0.12		
Power dissipation per pole for the above operational currents	AC-3	W	5.1	7.2	8.6	15	13	20	27	42	45	48		
	AC-1		9.7	12	14	24	21	29	31	65	88	120		
Electrical durability	AC-3 (Ue ≤ 440 V)	Million cycles	0.8			0.5	0.7	0.5	0.6	0.6	0.6			
	AC-1 (Ue ≤ 440 V)		0.25			0.2		0.4	0.25	0.25	0.2			
Mechanical durability			3		4		5			4	4	4		
Power Circuit Connections														
Connection maximum c.s.a.														
Flexible cable with cable end	1 conductor	mm ²	4...50	10...120	–									
	2 conductors		4...16	10...120 + 10...50	–									
Flexible cable without cable end	1 conductor	mm ²	4...50	10...120	–									
	2 conductors		4...25	10...120 + 10...50	–									
Solid cable without cable end	1 conductor	mm ²	4...50	10...120	–									
	2 conductors		4...25	10...120 + 10...50	–									
Cable with lug									150	185	240	2 x 150	2 x 240	–
Bar									2					
			Bar			mm x mm			3 x 25	4 x 32	5 x 30	30 x 5	40 x 5	60 x 5
Bolt diameter			1 conductor			mm			M8	M10				
Tightening torque			Power circuit connection		N.m		12	12	18	35			58	
Tool			Allen key n°4		Allen key n°4		Wrench							

4

Easy TeSys TVS contactors - Accessories for LC1E contactor



3-pole accessories for LC1E contactor - Accessories for motor reverse assembly

Using 2 identical contactors		LC1E06... E12	LC1E18/ E25	LC1E32/ E38	LC1E40... E65	LC1E80/ E95	LC1E120/ E160	LC1E200/ E250	LC1E300	LC1E400	LC1E500	LC1E630
Reference	Set of power connections ①	LAEP1	LAEP12	LAEP2	LAEP3	LAEP4	DIY (Do it yourself)	DIY (Do it yourself)	DIY (Do it yourself)	DIY (Do it yourself)	DIY (Do it yourself)	DIY (Do it yourself)
	Mechanical interlock ②	LAEM1	LAEM1	LAEM1	LAEM1	LAEM4	LAEM5	LAEM6	LAEM7	LAEM7	LAEM7	LAEM8



③ RC surge suppressor

Mounting	Screw mounting			
For use with contactor	Rating	LC1E06...E95		
	Type	24...48 V~	50...127 V~	110...240 V~
Reference	LAERCE	LAERCG	LAERCU	LAERCN

- Effective protection for circuits highly sensitive to "high frequency" interference and transient generated when the contactor coil is switched off. For use only in cases where the voltage is virtually sinusoidal, i.e. less than 5 % total harmonic distortion.
- Voltage limited to 3 Uc max. and oscillating frequency limited to 400 Hz max.
- Slight increase in drop-out time (1.2 to 2 times the normal time).

4

Easy TeSys TVS contactors - Accessories for LC1E contactor



Instantaneous auxiliary contact blocks for connection by screw lamps terminals (For use in normal operating environment)

Clip-on mounting	Front			
Number of contacts per block	1 NO / 1 NC	2 NO	2 NC	2 NO / 2 NC
Reference ①	LAEN11	LAEN20	LAEN02	LAEN22

Time delay auxiliary contact blocks for connection by screw clamp terminals 8 A - 690 V

Clip-on mounting	Front
Number of contacts per block	1 NO / 1 NC
Time delay type	On-delay
Setting range	1...30 s
Reference ②	LAETSD (For use only LC1E25 to LC1E630)

Instantaneous and time delay contact characteristics

Contact block type	LAEN11, 20, 02, 22			LAETSD					
Number of contacts	2 or 4			2					
Rated operational voltage (Ue)	Up to (V)			690					
Rated insulation voltage (Ui)	Conforming to IEC 60947-5-1 (V)			690					
Conventional thermal current (Ith)	For ambient temperature $\theta \leq 60$ °C (A)			10					
Minimum switching capacity	U min (V)			17					
	I min (mA)			5					
Short-circuit protection	Conforming to IEC 60947-5-1 (A)			10					
Rated making capacity	Conforming to IEC 60947-5-1 (Irms)			~ 140					
Short-time rating	Permissible for 1 s (A)			100					
	Permissible for 500 ms (A)			120					
	Permissible for 100 ms (A)			140					
Insulation resistance	mΩ			> 10					
Non-overlap time	Guaranteed between NC and NO contacts (ms)			1.5 (on energisation and on de-energisation)					
Overlap time	Guaranteed between LAE N22 NC and NO contacts (ms)			-					
Time delay	Ambient air temperature for operation (°C)			-20...+70					
	Repeat accuracy (°C)			±2 %					
	Drift up to 0.5 million operating cycles (°C)			+15 %					
	Drift depending on ambient air temperature (°C)			0.25 % per °C					
Mechanical durability	In millions of operating cycles			10					
Rated operational power of contacts (Conforming to IEC 60947-5-1)	a.c. supply categories AC14/15 (V)			24	48	115	230	400	440
	1 million operating cycles (VA)			60	120	280	560	960	1050
	3 million operating cycles (VA)			16	32	80	160	280	300
	10 million operating cycles (VA)			4	8	20	4	70	80

Environment

Conforming to standard	IEC 60947-5-1	
Product certifications	EAC	
Protective treatment	Conforming to IEC 60068	"TH"
Degree of protection	Conforming to IEC 60529	IP2X
Ambiant air temperature	Storage (°C)	-60...+80
	Operation (°C)	-5...+55
	Permissible for operation at Uc (°C)	-20...+70
Maximum operating altitude	Without derating (m)	3000
Connection by cable	Philips N° 2 and Ø 6 mm. Flexible or solid cable with or without cable end (mm ²)	Min: 1 x 1 Max: 2 x 2.5
Tightening torque	(N.m)	1.2

4

Easy TeSys Protect Thermal overload relays



Easy TeSys Protect Thermal overload relays - Compatible with Contactor (size 1 & 2)

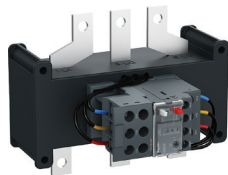
Reference	Possible I _{max} Calibration	Compatible with Contactor (size 1 & 2) Com. Ref.						
		LC1E06	LC1E09	LC1E12	LC1E18	LC1E25	LC1E32	LC1E38
LRE01	0.10...0.16 A	■	■	■	■	■	■	■
LRE02	0.16...0.25 A	■	■	■	■	■	■	■
LRE03	0.25...0.40 A	■	■	■	■	■	■	■
LRE04	0.40...0.63 A	■	■	■	■	■	■	■
LRE05	0.63...1 A	■	■	■	■	■	■	■
LRE06	1...1.6 A	■	■	■	■	■	■	■
LRE07	1.6...2.5 A	■	■	■	■	■	■	■
LRE08	2.5...4 A	■	■	■	■	■	■	■
LRE10	4...6 A	■	■	■	■	■	■	■
LRE12	5.5...8 A		■	■	■	■	■	■
LRE14	7...10 A		■	■	■	■	■	■
LRE16	9...13 A			■	■	■	■	■
LRE21	12...18 A				■	■	■	■
LRE22	16...24 A					■	■	■
LRE32	23...32 A					■	■	■
LRE35	30...38 A							■

4



Easy TeSys Protect Thermal overload relays - Compatible with Contactor (size 3 & 4)

Reference	Possible I _{max} Calibration	Compatible with Contactor (size 3 & 4) Com. Ref.				
		LC1E40	LC1E50	LC1E65	LC1E80	LC1E95
LRE322	17...25 A	■	■	■	■	■
LRE353	23...32 A	■	■	■	■	■
LRE355	30...40 A	■	■	■	■	■
LRE357	37...50 A		■	■	■	■
LRE359	48...65 A			■	■	■
LRE361	55...70 A				■	■
LRE363	63...80 A				■	■
LRE365	80...104 A					■



Easy TeSys Protect Thermal overload relays - Compatible with Contactor (size 5, 6, 7, 8 and 9)

Reference	Possible I _{max} Calibration	Compatible with Contactor (size 5, 6, 7, 8, and 9) Com. Ref.							
		LC1E120	LC1E160	LC1E200	LC1E250	LC1E300	LC1E400	LC1E500	LC1E630
LRE480	51...81A	■	■	□	□	□	□	□	□
LRE481	62...99A	■	■	□	□	□	□	□	□
LRE482	84...135A	■	■	□	□	□	□	□	□
LRE483	124...198A		□	■	□	□	□	□	□
LRE484	146...234A			□	■	■	■	□	□
LRE485	174...279A			□	■	■	■	□	□
LRE486	208...333A				■	■	■	□	□
LRE487	259...414A					■	■	□	□
LRE488	321...513A						□	■	□
LRE489	394...630A							□	■

Note:
 ■ Means the relay can match with contactor both in electrical and mechanical.
 □ Means the relay can match with contactor only in electrical (can not directly mounting).

Common characteristics
 > Class: 10 A.
 > Operating voltage: max. 690 V AC.

Easy TeSys Protect Thermal overload relays

Easy TeSys TVS 3-pole contactors											
Power circuit characteristics											
Relay type	Reference	LRE 01...21	LRE 22...35	LRE 322...365	LRE 480...482	LRE 483	LRE 484	LRE 485...487	LRE 488	LRE 489	
Size		1	2	3			4				
Tripping class	Conforming to IEC 60947-4-1	10 A									
Rated insulation voltage	Conforming to IEC 60947-4-1	V 690									
Rated impulse withstand voltage (Uimp)		kV 6									
Frequency limits	Of the operating current	Hz 50...60									
Setting range	Depending on model	A 0.1...18	16...38	17...104	51...630						
Power Circuit Connections											
Connection by screw clamp terminals		Minimum/maximum c.s.a.									
	Flexible cable without cable end 1 conductor	mm ²	1.5...6	2.5...10	4...35	–					
	Flexible cable with cable end 1 conductor		1...4	1.5...6	4...35	–					
	Solid cable without cable end 1 conductor		1...6	2.5...10	4...35	–					
	Tightening torque	N.m	1.7	2.5	9	–					
Connection by bars or lugs											
Pitch	Without spreaders	mm	–	–	34.8	40	48	48	55	80	
Bars or cables with lugs	Cross section		–	–	3X18	3X20	3X25	4X25	5x30	6X40	
Screws	Type		–	–	M8	M8	M10	M10	M10	M12	
	Tightening torque	N.m	–	–	27.5	27.5	35	35	35	58	
Auxiliary Contact Characteristics											
Conventional thermal current		A	5								
Max. sealed consumption of the operating coils of controlled contactors (Occasional operating cycles of contact 95-96)	a.c. supply	V	110	120	220	240	380	480	500	600	
		A	3.27	3	1.63	1.5	0.95	0.75	0.72	0.12	
Protection against short-circuits	By gG, maximum rating or by GB2	A	5								
Connection by screw clamp terminals		Minimum/maximum c.s.a.									
	Flexible cable without cable end 1 conductor	mm ²	2 x 1...2.5								
	Flexible cable with cable end 1 conductor		2 x 1...2.5								
	Solid cable without cable end 1 conductor		2 x 1...2.5								
	Tightening torque	N.m	1.7								
Environment											
Conforming to standard		IEC 60947-4-1, IEC 60947-5-1									
Product certifications		EAC									
Degree of protection	Conforming to IEC 60529	IP2X			IP00						
Protective treatment	Conforming to IEC 60068	"TH"									
Ambiant air temperature	Storage	°C	-60...+80								
	Normal operation without derating (IEC 60947-4-1)		-20...+60								
	Minimum/maximum operating temperature (with derating) (1)		-20...+70								
Operating positions without derating	In relation to normal vertical mounting plane	Any position									
Flame resistance	Conforming to IEC 60068-2-1	°C	850								
Shock resistance	Permissive acceleration conforming to IEC 60068-2-7	6 gn - 11 ms									
Vibration resistance	Permissive acceleration conforming to IEC 60068-2-6	3 gn									
Dielectric strenght at 50 Hz Surge withstand	Conforming to IEC 60255-5	kV	6								
	Conforming to IEC 60801-5		6								
Operating Characteristics											
Temperature compensation		°C	-20...+60								
Tripping threshold	Conforming to IEC 60947-4-1	A	1.14 ± 0.06 I _r								
Sensitivity to phase failure	Conforming to IEC 60947-4-1	Tripping current 130 % of I _r on two phase, the last one at 0									

(1) Contact your regional sales.

Easy TeSys Protect Thermal overload relays



Easy TeSys TVS thermal overload relays - 3-pole thermal overload relays

Differential Thermal Overload Relays for Use with Fuses or Magnetic Circuit-breakers GV2 L and GV3 L

- Compensated relays with manual or automatic reset,
- with relay trip indicator,
- for a.c.

Relay setting range (A)	Fuses to be used with selected relay		For use with contactor LC1	Reference	Weight kg
	aM (A)	gG (A)			
Class 10 A (1) for connection by screw clamp terminals					
0.10...0.16	0.25	2	E06...E38	LRE01	0.130
0.16...0.25	0.5	2	E06...E38	LRE02	0.130
0.25...0.40	1	2	E06...E38	LRE03	0.130
0.40...0.63	1	2	E06...E38	LRE04	0.130
0.63...1	2	4	E06...E38	LRE05	0.130
1...1.6	2	4	E06...E38	LRE06	0.130
1.6...2.5	4	6	E06...E38	LRE07	0.130
2.5...4	6	10	E06...E38	LRE08	0.130
4...6	8	16	E06...E38	LRE10	0.130
5.5...8	12	20	E09...E38	LRE12	0.130
7...10	12	20	E09...E38	LRE14	0.130
9...13	16	25	E12...E38	LRE16	0.130
12...18	20	35	E18...E38	LRE21	0.130
16...24	25	50	E25...E38	LRE22	0.130
23...32	40	63	E25...E38	LRE32	0.130
30...38	40	80	E38	LRE35	0.130
17...25	25	50	E40...E95	LRE322	0.470
23...32	40	63	E40...E95	LRE353	0.470
30...40	40	100	E40...E95	LRE355	0.470
37...50	63	100	E50...E95	LRE357	0.460
48...65	63	100	E65...E95	LRE359	0.460
55...70	80	125	E80...E95	LRE361	0.480
63...80	80	125	E80...E95	LRE363	0.480
80...104	80	160	E95	LRE365	0.520
Class 10 A (1) directly connected by connector					
51...81	100	125	E120...E160	LRE480	2.2
62...99	125	160	E120...E160	LRE481	2.2
84...135	160	200	E120...E160	LRE482	2.2
124...198	200	250	E200	LRE483	2.1
146...234	250	315	E250...E400	LRE484	2.2
174...279	315	315	E250...E400	LRE485	2.2
208...333	400	400	E250...E400	LRE486	2.2
259...414	400	500	E300...E400	LRE487	2.4
321...513	500	800	E500	LRE488	3.2
394...630	630	1000	E630	LRE489	3.9

(1) Standard IEC 60947-4-1 specifies a tripping time for 7.2 times the setting current I_r : class 10 A: between 2 and 10 seconds.

4

A man and a woman are in a server room. The man, wearing a blue and white checkered shirt, is leaning over the woman. The woman, wearing a black jacket and glasses, is holding a tablet and pointing at a rack of server hardware. The rack contains various components, including a monitor displaying a green screen with a yellow warning triangle, and several rows of white and black modules. The background shows more server racks and cables.

05. Easy Altivar variable speed drives

Easy Altivar 610 - IP 20 drives (Power range from 0.75 kW to 160 kW)



Three-phase supply voltage: 380...460 V 50/60 Hz, with integrated category C3 EMC filter

ND: Normal duty (2), HD: Heavy duty (3)			kW	HP	kW	HP	kW	HP	kW	HP	kW	HP
Motor (1)	Power indicated on rating plate	ND	0.75	0.37	1.5	0.75	2.2	1.5	3	2.2	4	3
		HD	1	0.5	2	1	3	2	4	3	5	–
Easy Altivar 610	Max. continuous output current (1)		2.2	1.5	4.0	2.2	5.6	4.0	7.2	5.6	9.3	7.2
Dimensions: W x H x D (mm)	EMC plate not mounted (mm)		145 x 297 x 203 ①									
Reference			ATV610U07N4		ATV610U15N4		ATV610U22N4		ATV610U30N4		ATV610U40N4	

ND: Normal duty (2), HD: Heavy duty (3)			kW	HP	kW	HP	kW	HP	kW	HP	kW	HP
Motor (1)	Power indicated on rating plate	ND	5.5	4	7.5	5.5	11	7.5	15	11	18.5	15
		HD	7.5	5	10	7.5	15	10	20	15	25	20
Easy Altivar 610	Max. continuous output current (1)		12.7	9.3	15.8	12.7	23.5	16.5	31.7	23.5	39.2	31.7
Dimensions: W x H x D (mm)	EMC plate not mounted (mm)		145 x 297 x 203 ①				171 x 360 x 233 ②				211 x 495 x 232 ③	
Reference			ATV610U55N4		ATV610U75N4		ATV610D11N4		ATV610D15N4		ATV610D18N4	

ND: Normal duty (2), HD: Heavy duty (3)			kW	HP	kW	HP	kW	HP	kW	HP	kW	HP
Motor (1)	Power indicated on rating plate	ND	22	18.5	30	22	37	30	45	37	55	45
		HD	30	25	40	30	50	40	60	50	75	60
Easy Altivar 610	Max. continuous output current (1)		46.3	39.2	61.5	46.3	74.5	59.6	88	74.5	106	88
Dimensions: W x H x D (mm)	EMC plate not mounted (mm)		211 x 495 x 232 ③		226 x 613 x 271 ④				290 x 762 x 323 ⑤			
Reference			ATV610D22N4		ATV610D30N4		ATV610D37N4		ATV610D45N4		ATV610D55N4	

ND: Normal duty (2), HD: Heavy duty (3)			kW	HP	kW	HP	kW	HP	kW	HP	kW	HP
Motor (1)	Power indicated on rating plate	ND	75	55	90	75	110	90	132	110	160	132
		HD	100	75	125	100	149	125	178	149	216	178
Easy Altivar 610	Max. continuous output current (1)		145	106	173	145	211	173	250	211	302	250
Dimensions: W x H x D (mm)	EMC plate not mounted (mm)		290 x 762 x 323 ⑤				320 x 852 x 390 ⑥					
Reference			ATV610D75N4		ATV610D90N4		ATV610C11N4		ATV610C13N4		ATV610C16N4	

- (1) These values are given for a nominal switching frequency of 4 kHz up to ATV610D45N4, or 2.5 kHz for ATV610D55N4...C16N4 for use in continuous operation. The switching frequency is adjustable from 2...12 kHz up to ATV610D45N4, or from 1...8 kHz for ATV610D55N4...C16N4. Above 2.5 or 4 kHz (depending on the rating), the drive will automatically reduce the switching frequency in the event of an excessive temperature rise. For continuous operation above the nominal switching frequency, derate the nominal drive current (see the derating curves on our website).
- (2) Values given for applications requiring a slight overload (up to 110 % for 60 s or 120% for 20 s).
- (3) Values given for applications requiring a slight overload (up to 150 % for 60 s).
- (4) With IP21 conformity kit.

Easy Altivar 610 - Accessories for mounting of variable speed drives



Kit for IP 21 conformity		
For use with variable speed drives		ATV610C11N4... C16N4
Power	kW	110...160
	HP	149...216
Reference		VW3A9704

Easy Altivar 610 - Configuration and runtime tools, Communication buses and networks



Plain text display terminal

Degree of protection	IP21
Display type	Backlit LCD screen white
Pixel resolution	128 x 64
Reference	VW3A1113



Remote mounting kit

Type of product	Remote mounting kit for plain text display terminal 1	Tightening tool for remote mounting kit 2	Remote mounting cordset (equipped with 2 RJ45 connectors) 3			
Degree of protection	IP20	–	–	–	–	–
Length (m)	–	–	1	3	5	10
Connector type	–	–	RJ45			
Reference	VW3A1114	ZB5AZ905	VW3A1104R10	VW3A1104R30	VW3A1104R50	VW3A1104R100



I/O modules (option)

I/O type	Digital inputs	6	–
	Digital outputs	2	–
	Analog inputs	2 (1)	–
	Relay outputs	–	3 (2)
Reference		VW3A3203	VW3A3204

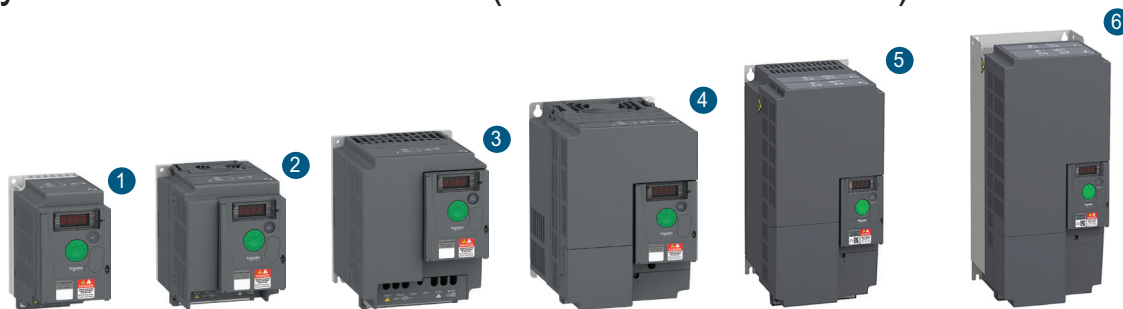


PROFIBUS DP V1 optional communication module

Electrical connection	1 female connector SUB-D 9
Transmission rate	9.6 kbps...12 Mbps
Display type	1 LED for RUN, 1 LED for bus fault
Bus profile	PROFIdrive, CiA 402
Reference	VW3A3607

(1) Differential analog inputs configurable via software as current (0-20 mA/4-20 mA) or probe (PTC, PT100, or 2-wire or 3-wire PT1000) inputs. When configured as PTC probe inputs, they must never be used to protect an ATEX motor in applications in explosive atmospheres. Please refer to the "ATEX guide" on our website.
(2) NO contacts.

Easy Altivar 310 - IP 20 drives (380...460 V 50/60 Hz)



Three-phase supply voltage: 380...460 V 50/60 Hz, without EMC filter

Motor	Power indicated on rating plate (1)	HD	kW	0.37	0.75	1.5	2.2	3
			HP	0.5	1	2	3	4
Easy Altivar 310	Max. continuous output current (1)	ND	kW					4
			HP					5
Dimensions: W x H x D (mm)			72 x 143 x 130	72 x 143 x 140	105 x 143 x 151	105 x 143 x 151	140 x 184 x 151	
Reference			ATV310H037N4E	ATV310H075N4E	ATV310HU15N4E	ATV310HU22N4E	ATV310HU30N4E	

Motor	Power indicated on rating plate	HD	kW	4	5.5	7.5	11	15	18.5	22
			HP	5	7.5	10	15	20	25	30
Easy Altivar 310	Max. continuous output current	ND	kW	5.5	7.5	11	15	18.5	22	30
			HP	7.5	10	15	20	25	30	40
Dimensions: W x H x D (mm)			140 x 184 x 151	140 x 184 x 151	150 x 232 x 171	150 x 232 x 171	180 x 330 x 191	180 x 330 x 191	180 x 390 x 212	
Reference			ATV310HU40N4E	ATV310HU55N4E	ATV310HU75N4E	ATV310HD11N4E	ATV310HD15N4E	ATV310HD18N4E	ATV310HD22N4E	

(1) These values are given for a nominal switching frequency of 4 kHz, for use in continuous operation. If operation above 4 kHz needs to be continuous, the nominal drive current should be derated by 10% for 8 kHz and 20% for 12 kHz.

Three-phase supply voltage: 380...460 V 50/60 Hz, with C3 EMC filter

Motor	Power indicated on rating plate	HD	kW	15	18.5	22
			HP	20	25	30
Easy Altivar 310	Max. continuous output current	ND	kW	18.5	22	30
			HP	25	30	40
Dimensions: W x H x D (mm)			180 x 330 x 191	180 x 330 x 191	180 x 390 x 212	
Reference			ATV310HD15N4EF	ATV310HD18N4EF	ATV310HD22N4EF	

(1) These values are given for a nominal switching frequency of 4 kHz, for use in continuous operation. If operation above 4 kHz needs to be continuous, the nominal drive current should be derated, for details please refer to user manual.

5

Easy Altivar 310 - Configuration tools



Simple Loader, Multi-Loader configuration tools and associated cable

Description	Simple Loader tool 7 For duplicating one drive configuration on another drive. The drives must be powered-up.	Multi-Loader tool 8 For copying a configuration on a PC or drive and duplicating it on another drive. The drives do not need to be powered-up.
Kit composition	Simple loader tool 1 cordset with 2 connectors RJ45	Multi loader tool 1 adaptor RJ45 female/female 4 batteries AA/LR6 1.5 V 1 cordset with 2 connectors RJ45 1 memory card SD 2 Go 1 cordset with 1 connector USB type A and 1 connector USB type mini B
For use with	ATV310H●●●N4E	ATV310H●●●N4E
Reference	VW3A8120	VW3A8121

Remote display terminals and associated cordsets

Description	Remote display terminals 9 For fixing the Human-Machine interface on an enclosure door with IP 54 or IP 65 degree of protection. A remote-fixing cordset VW3A1104R●● is also required.		Remote-fixing cordsets 10 Equipped with 2 RJ45 connectors. For connecting the VW3 A1006 or VW3A1007 remote display terminal to the Easy Altivar 310 drive.	
For use with	ATV310H●●●N4E	ATV310H●●●N4E	ATV310H●●●N4E	ATV310H●●●N4E
Degree of protection	IP 54	IP 65	—	—
Dimensions: W x H x D (mm)	50 x 70 x 22.7	66 x 106 x 26.7	Length: 1 m/3.28 ft	Length: 3 m/9.84 ft
Reference	VW3A1006	VW3A1007	VW3A1104R10	VW3A1104R30

Easy Altivar 310 - line chokes, motor chokes and LR filter cells



Line chokes

For use with			ATV310H037N4E	ATV310H075N4E	ATV310HU15N4E	ATV310HU22N4E	ATV310HU30N4E
Line current with choke	HD	380 V	1.1	1.9	3.5	5.1	6.6
		460 V	1	1.7	2.9	4.4	5.6
	ND	380 V					8.5
		460 V					7.1
Line current without choke	HD	380 V	2.1	3.5	6.5	8.8	11.1
		460 V	1.8	3.1	5.4	7.2	9.2
	ND	380 V					14.2
		460 V					11.6
Dimensions: W x H x D (mm)			100 x 135 x 60			130 x 155 x 90	
Reference			VW3A4551			VW3A4552	

For use with			ATV310HU40N4E	ATV310HU55N4E	ATV310HU75N4E	ATV310HD11N4E	ATV310HD15N4E
Line current with choke	HD	380 V	8.5	11.6	16.1	22	28.9
		460 V	7.7	9.9	14.2	18.3	24.4
	ND	380 V	11.6	15.3	22.2	29.9	29
		460 V	9.9	12.8	18.8	25	29
Line current without choke	HD	380 V	13.7	21.3	26.6	36.1	46.5
		460 V	11.4	14.3	22.4	30.4	38.5
	ND	380 V	18	23	29.5	38.6	46.6
		460 V	14.9	19	24.8	32.5	38.8
Dimensions: W x H x D (mm)			130 x 155 x 90			155 x 170 x 135	
Reference			VW3A4553			VW3A4554	

For use with			ATV310HD18N4E	ATV310HD22N4E	ATV310HD15N4EF	ATV310HD18N4EF	ATV310HD22N4EF
Line current with choke	HD	380 V	36.4	42.4	28.9	36.4	42.4
		460 V	31.6	36.3	24.4	31.6	36.3
	ND	380 V	41.8	57.2	29	41.8	57.2
		460 V	35.3	48.3	29	35.3	48.3
Line current without choke	HD	380 V	55.3	64.2	46.5	55.3	64.2
		460 V	45.8	53.2	38.5	45.8	53.2
	ND	380 V	54.1	71.2	46.6	54.1	71.2
		460 V	45.1	59.2	38.8	45.1	59.2
Dimensions: W x H x D (mm)			HD	180 x 210 x 160	180 x 210 x 160	155 x 170 x 135	180 x 210 x 160
			ND V		270 x 210 x 180		270 x 210 x 180
Reference			HD	VW3A4555	VW3A4555	VW3A4554	VW3A4555
			ND V	-	VW3A4556	-	VW3A4556

Motor chokes

For use with	ATV310H037N4E	ATV310H075N4E	ATV310HU15N4E	ATV310HU22N4E	ATV310HU30N4E
HD and ND	HD		HD		HD/ND
Losses (W)	45		65		
Nominal current (A)	4		10		
Dimensions: W x H x D (mm)	100 x 135 x 60		130 x 155 x 90		
Reference	VW3A4551		VW3A4552		

For use with	ATV310HU40N4E	ATV310HU55N4E	ATV310HU75N4E	ATV310HD11N4E
HD and ND	HD/ND		HD/ND	
Losses (W)	75		90	
Nominal current (A)	17		31	
Dimensions: W x H x D (mm)	130 x 155 x 90		155 x 170 x 135	
Reference	VW3A4553		VW3A4554	

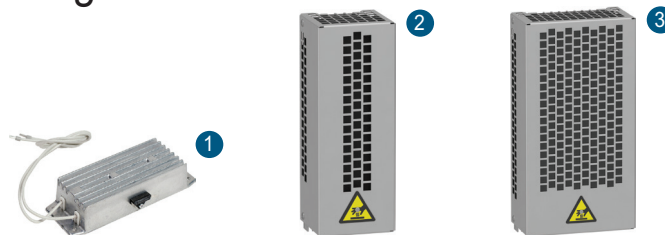
Motor chokes

For use with	ATV310HD15N4E(F)	ATV310HD18N4E(F)	ATV310HD22N4E(F)	
HD and ND	HD/ND		HD	ND
Losses (W)	94		94	260
Nominal current (A)	60		60	107
Dimensions: W x H x D (mm)	180 x 210 x 160		180 x 210 x 160	270 x 210 x 180
Reference	VW3A4555		VW3A4555	VW3A4556

LR filter cell

For use with	ATV310H037N4E...HU15N4E
Losses (W)	150
Nominal current (A)	10
Dimensions: W x H x D (mm)	169.5 x 340 x 123
Reference	VW3A58451

Easy Altivar 310 - Braking resistors



Braking resistors

Not protected resistor (IP00) (1)					
For use with	ATV310HU15N4E	ATV310HU22N4E	ATV310HU30N4E	ATV310HU40N4E	
Minimum Ohmic value (W)	80	60	36	36	
Ohmic value at 20° C (W)	100		100		
Power available at 50° C (kW) (2)	0.028		0.035		
Dimensions: W x H x D (mm)	60 x 170 x 30		62 x 212 x 36		
Reference	VW3A7723 ①		VW3A7725 ①		
Protected resistor (IP20 or 23)					
For use with	ATV310HU15N4E	ATV310HU22N4E	ATV310HU30N4E	ATV310HU40N4E	
Minimum Ohmic value (W)	80	60	36	36	
Ohmic value at 20° C (W)	100				
Power available at 50° C (kW) (2)	0.1				
Dimensions: W x H x D (mm)	105 x 295 x 100				
Reference	VW3A7730 ②				
Protected resistor (IP20 or 23)					
For use with	ATV310HU55N4E	ATV310HU75N4E	ATV310HD11N4E	ATV310HD15N4E	
Minimum Ohmic value (W)	28	28	28	16	
Ohmic value at 20° C (W)	60		28	16	
Power available at 50° C (kW) (2)	0.16		0.3	0.96	
Dimensions: W x H x D (mm)	105 x 345 x 100		175 x 345 x 100	190 x 570 x 180	
Reference	VW3A7731 ②		VW3A7732 ③	VW3A7733	
Protected resistor (IP20 or 23)					
For use with	ATV310HD18N4E	ATV310HD22N4E	ATV310HD15N4EF	ATV310HD18N4EF	ATV310HD22N4EF
Minimum Ohmic value (W)	10	10	16	10	10
Ohmic value at 20° C (W)	16				
Power available at 50° C (kW) (2)	0.96				
Dimensions: W x H x D (mm)	190 x 570 x 180				
Reference	VW3A7733				

(1) For not protected resistors, add a thermal overload device.

(2) Load factor for resistors: the value of the average power that can be dissipated at 50 °C from the resistor into the casing is determined for a load factor during braking that corresponds to the majority of normal applications.

For VW3A7730...7733:

- 2 s braking with a 0.6 T_n braking torque for a 40 s cycle

- 0.8 s braking with a 1.5 T_n braking torque for a 40 s cycle

5

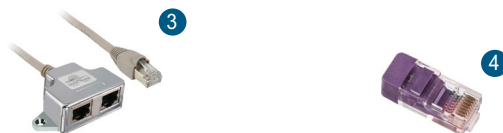
Easy Altivar 310 - Modbus serial link



Modbus serial link

Connection via splitter box and RJ45 connectors

Description	Modbus splitter box ¹ 10 RJ45 connectors and 1 screw terminal	Cordsets for Modbus serial link ² equipped with 2 RJ45 connectors		
Length (m)	–	0.3	1	3
Reference	LU9GC3	VW3A8306R03	VW3A8306R10	VW3A8306R30

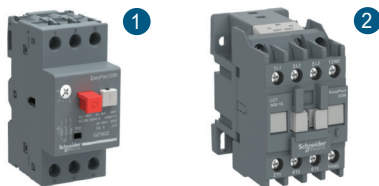


Description	Modbus T-junction boxes ³ (with integrated cable)		Line terminators ^{(1) (2) 4} For RJ45 connector	
Length (m)	0.3	1	–	–
Reference	VW3A8306TF03	VW3A8306TF10	VW3A8306RC	VW3A8306R

(1) Depends on the bus architecture.

(2) Order in multiples of two.

Easy Altivar 310 - Motor starters



5

Motor starters - Three-phase supply voltage, 380...460 V 50/60 Hz (2)

Standard power ratings	kW	0.37	0.75	1.5	2.2	3	4
	HP	0.5	1	2	3	4	5.4
Variable speed drive		ATV310H037N4E	ATV310H075N4E	ATV310HU15N4E	ATV310HU22N4E	ATV310HU30N4E	ATV310HU40N4E
Combination with control circuit	¹ TeSys motor circuit-breaker (3)	GZ1LE07	GZ1LE08	GZ1LE14	GZ1LE14	GZ1LE16	GZ1LE20
	Operating range	2.5	4	10	10	14	18
	² TeSys contactor (1)	LC1E06●●●●	LC1E06●●●●	LC1E09●●●●	LC1E09●●●●	LC1E18●●●●	LC1E18●●●●
Standard power ratings	kW	5.5	7.5	11	15	18.5	22
	HP	7.4	10	15	20	25	30
Variable speed drive		ATV310HU55N4E	ATV310HU75N4E	ATV310HD11N4E	ATV310HD15N4E(F)	ATV310HD18N4E(F)	ATV310HD22N4E(F)
Combination with control circuit	¹ TeSys motor circuit-breaker (3) (4)	GZ3LE25	GZ3LE32	GZ3LE40	GZ3LE50	GZ3LE65	GZ3LE73
	Operating range	25	32	40	50	60	73
	² TeSys contactor (1)	LC1E25●●●●	LC1E32●●●●	LC1E40●●	LC1E50●●	LC1E65●●	LC1E80●●

(1) For a complete list of references for TeSys contactors, please visit our local website.

(2) Motor power indicated for combination with an ATV310H●●●N4E drive with the same rating.

(3) TeSys motor circuit-breakers:

- GZ1N●●: Thermal magnetic motor circuit-breakers with pushbutton control
- CVS●●: Molded-case circuit breakers with adjustable setting.

(4) Not released yet, will be available soon.



06. Easy Harmony Electromechanical Relays

Easy Harmony RXM electromechanical relays



Easy Harmony RXM miniature plug-in relays

Type		With LED - Miniature relays without lockable test-button	
Contact		2 CO	4 CO
Enclosed Thermal Current (I _{the})		5 A	3 A
Complete product	12 VDC	RXM2LB2JD	RXM4LB2JD
	24 VDC	RXM2LB2BD	RXM4LB2BD
	36 VDC	-	RXM4LB2CD
	48 VDC	RXM2LB2ED	RXM4LB2ED
	110 VDC	RXM2LB2FD	RXM4LB2FD
	24 VAC	RXM2LB2B7	RXM4LB2B7
	120 VAC	RXM2LB2F7	RXM4LB2F7
	230 VAC	RXM2LB2P7	RXM4LB2P7

Type		Without LED - Miniature relays without lockable test-button	
Contact		2 CO	4 CO
Enclosed Thermal Current (I _{the})		5 A	3 A
Complete product	12 VDC	RXM2LB1JD	RXM4LB1JD
	24 VDC	RXM2LB1BD	RXM4LB1BD
	24 VAC	RXM2LB1B7	RXM4LB1B7
	120 VAC	RXM2LB1F7	RXM4LB1F7
	230 VAC	RXM2LB1P7	RXM4LB1P7



For use with	RXM2	RXM2, RXM4
Screw clamp socket	RXZE1M2C	RXZE1M4C



For use with	RXZE1M●C	RXZE1M2C
Metal maintaining clamp	RXZ410	RXZ420

Note: If the protection module is needed, please use RXZE● sockets with the associated protection module RXM0. You can find more details in [Harmony Electromechanical Relays catalog - RXM●AB range section](#).

A man in a grey shirt is shown in profile, interacting with a control panel on a machine. The panel features a red emergency stop button and a black control unit with a red light. The background is a factory floor with glass safety enclosures and industrial equipment. A green horizontal bar is overlaid on the image, and a semi-transparent green box contains the text.

07. Easy Modicon power supplies

Easy Modicon ABL2K power supplies and Accessories



ABL2 regulated switch mode 24 V DC power supplies 1

Cooling design	Natural convection			
Automatic protect reset				
Voltage switching	Automatic			
Input Voltagesingle-phase (47~63Hz)	100...240 VAC			
Output Voltage	24 V DC			
Power (W)	35		50	
Output current (A)	1.5		2.2	
Overload hiccup protection (%)	110-160		170-190	
Reference	ABL2REM24015K	ABL2REM24020K	ABL2REM24015KQ	ABL2REM24020KQ

Cooling design	Natural convection			
Automatic protect reset				
Voltage switching	Automatic		Manual	
Input Voltagesingle-phase (47~63Hz)	100...240 VAC		100...120 VAC, 200...240 VAC	
Output Voltage	24 V DC			
Power (W)	100		150	
Output current (A)	4.5		6.5	
Overload hiccup protection (%)	110-160		170-190	
Reference	ABL2REM24045K	ABL2REM24065K	ABL2REM24045KQ	ABL2REM24065KQ

Cooling design	Natural convection		Forced air cooling by built-in DC fan	
Automatic protect reset				
Voltage switching	Manual			
Input Voltagesingle-phase (47~63Hz)	100...120 VAC, 200...240 VAC			
Output Voltage	24 V DC			
Power (W)	200	250	350	
Output current (A)	8.3	10.5	14.6	
Overload hiccup protection (%)	110-150			
Reference	ABL2REM24085K	ABL2REM24100K	ABL2REM24150K	



Options for ABL2 power supplies

Type of mounting accessory	4-corner bracket 2	Clip-on mounting plate 3	L-type accessories 4	
Description	For direct mounting on back panel Mounting screws not provided. Recommended use: M4 (6 mm/0.24 in) or M4 (8 mm/0.31 in) screws	For mounting on 35 mm (1.37 in.) DIN rail	Size: Small L	Size: Big L
For power supplies	ABL2REM24085K, ABL2REM24100K, ABL2REM24150K	All models	ABL2REM24015K, ABL2REM24015KQ, ABL2REM24020K, ABL2REM24020KQ, ABL2REM24045K, ABL2REM24045KQ, ABL2REM24065K, ABL2REM24065KQ	ABL2REM24085K, ABL2REM24100K, ABL2REM24150K
Sold in lots of	40	5 (1)	1	1
Reference	ABL2K01	ABL2K02	ABL2K03A	ABL2K03B

(1) ABL2K02 is a pack of 5 accessories usable on 35 mm (1.37 in.) DIN rails. Please note that only 1 accessory is necessary for mounting a 35 to 150 W model but 2 accessories are needed for the other three models (200, 250, and 350 W).



08. Easy Lexium Motion Control

Easy Lexium 16D Motion control



Lexium 16D servo drives and BCH16 servo motors combinations - Single-phase supply voltage: 200/230 VAC

Power output (kW)	0.1		0.2	
Dimensions: W x H x D (mm)	52 x 150 x 155.2		52 x 150 x 155.2	
Nominal speed of rotation (min-1)	3000		3000	
Nominal torque (N.m)	0.32		0.64	
With holding brake	No	Yes	No	Yes
Inertia -without holding brake (kg.cm ²)	0.041	0.047	0.42	0.48
Motor inertia type	Low		High	
Reference	Servo drive reference ①	LXM16DU01M2X LXM16MU01M2X		LXM16DU02M2X LXM16MU02M2X
	Servo motor reference ②	BCH16LB01330A5C2 BCH16LB01332A5C2	BCH16LB01330F5C2 BCH16LB01332F5C2	BCH16HD02330A5C2 BCH16HD02332F5C2

Power output (kW)	0.4		0.75	
Dimensions: W x H x D (mm)	52 x 150 x 155.2		65 x 150 x 185.2	
Nominal speed of rotation (min-1)	3000		3000	
Nominal torque (N.m)	1.27		2.39	
With holding brake	No	Yes	No	Yes
Inertia -without holding brake (kg.cm ²)	0.67	0.73	1.51	1.64
Motor inertia type	Low		High	
Reference	Servo drive reference ①	LXM16DU04M2X LXM16MU04M2X		LXM16DU07M2X LXM16MU07M2X
	Servo motor reference ②	BCH16HD04330A5C2 BCH16HD04332A5C2	BCH16HD04330F5C2 BCH16HD04332F5C2	BCH16HF07330A5C2 BCH16HF07332F5C2

Power output (kW)	1		1	
Dimensions: W x H x D (mm)	65 x 150 x 185.2		65 x 150 x 185.2	
Nominal speed of rotation (min-1)	3000		3000	
Nominal torque (N.m)	3.18		3.18	
With holding brake	No	Yes	No	Yes
Inertia -without holding brake (kg.cm ²)	1.24	1.37	2.65	2.75
Motor inertia type	Low		Low	
Reference	Servo drive reference ①	LXM16DU10M2X LXM16MU10M2X		LXM16DU10M2X LXM16MU10M2X
	Servo motor reference ②	BCH16LF10330A5C2 BCH16LF10332A5C2	BCH16LF10330F5C2 BCH16LF10332F5C2	BCH16LH10330A6C2 BCH16LH10332A6C2

Power output (kW)	1			
Dimensions: W x H x D (mm)	65 x 150 x 185.2			
Nominal speed of rotation (min-1)	2000			
Nominal torque (N.m)	3.18			
With holding brake	No		Yes	
Inertia -without holding brake (kg.cm ²)	10.88		11.58	
Motor inertia type	High			
Reference	Servo drive reference ①	LXM16DU10M2X LXM16MU10M2X		
	Servo motor reference ②	BCH16HM10230A6C2 BCH16HM10232A6C2		BCH16HM10230F6C2 BCH16HM10232F6C2

Power output (kW)	0.85		1.5	
Dimensions: W x H x D (mm)	65 x 150 x 185.2		65 x 150 x 185.2	
Nominal speed of rotation (min-1)	1500		2000	
Nominal torque (N.m)	5.39		7.16	
With holding brake	No	Yes	No	Yes
Inertia -without holding brake (kg.cm ²)	14.08	14.78	14.8	15.5
Motor inertia type	High		High	
Reference	Servo drive reference ①	LXM16DU15M2X LXM16MU15M2X		LXM16DU15M2X LXM16MU15M2X
	Servo motor reference ②	BCH16HM08130A6C2 BCH16HM08132A6C2	BCH16HM08130F6C2 BCH16HM08132F6C2	BCH16HM15230A6C2 BCH16HM15232A6C2

Easy Lexium 16D Motion control - Connection accessories



Connectors			
Designation	SCSI-26 connector for creating control cordsets (CN1) 1	Connector for connection of power supply, external braking resistor and motor power output (CNP) 2	10-pin connector for creating encoder cordsets (CN2) For cable crosssection: 2*0.5 mm ² + 3 x 2 x 0.2 mm ² 3
Description	1 x SCSI-26 connector 1 x shielded chassis 1 x connector housing 2 x screw for fix to connection port 2 x screw for connector housing	1 x connector	1 x IEEE1394 10-pin connector 1 x shielded chassis 1 x connector housing 2 x spring clamp for fix to connection port
For use with	LXM16DU01M2X, LXM16DU02M2X, LXM16DU04M2X, LXM16DU07M2X, LXM16DU10M2X, LXM16DU15M2X LXM16MU01M2X, LXM16MU02M2X, LXM16MU04M2X, LXM16MU07M2X, LXM16MU10M2X, LXM16MU15M2X		
Reference	VW3M4A11	VW3M4A21	VW3M4A31



Control cordsets and Power cordset kit			
Designation	Pre-assembled control cordsets dedicated to 24VDC pulse train with interface module (CN1)	Pre-assembled control cordsets dedicated to 3.3 VDC pulse train with interface module (CN1)	Power cordset shield connection plate
Description	1 x pre-assembled control cordsets (Length: 1 m/3.28 ft.) 1 x interface module	1 x pre-assembled control cordsets (Length: 1 m/3.28 ft.) 1 x interface module	1 x grounding chassis 1 x spring clamp connector
For use with	LXM16DU01M2X, LXM16DU02M2X, LXM16DU04M2X, LXM16DU07M2X, LXM16DU10M2X, LXM16DU15M2X LXM16MU01M2X, LXM16MU02M2X, LXM16MU04M2X, LXM16MU07M2X, LXM16MU10M2X, LXM16MU15M2X		
Reference	VW3M4A12	VW3M4A15	VW3M2A31



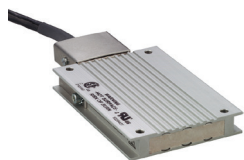
Programming cables	
Designation	Programming cables
Description	Transferring a configuration from a PC to the Lexium 16D servo drive via the CN3 interface (USB mini-B) on Lexium 16D servo drives
Length (m)	3
Reference	TCSXCNAMUM3P (1) BMXXCAUSBH018

(1) Unshielded, non-grounded cable. Only for use on temporary connections. For permanent connections, use cable reference BMXXCAUSBH018.



Modbus TCP network cordsets									
Designation	Straight shielded twisted pair cordsets (conforming to EIA/TIA-568, category 5 and IEC1180/EN50173, class D standards)			Crossed shielded twisted pair cordsets		Straight shielded twisted pair cordsets (conforming to UL and CSA 22.1 standards)			Crossed shielded twisted pair cordsets
Description	2 RJ45 connectors								
Length (m)	2	5	12	5	15	2	5	15	5
Reference	490NTW00002	490NTW00005	490NTW00012	490NTC00005	490NTC00015	490NTW00002U	490NTW00005U	490NTW00012U	490NTC00005U

Easy Lexium 16D Motion control - External braking resistor



External braking resistors					
For use with Servo drives		LXM16DU07M2X, LXM16DU10M2X, LXM16DU15M2X LXM16MU07M2X, LXM16MU10M2X, LXM16MU15M2X			
Ohmic value (W)		27			
Continuous power (PPr)		100	200	400	
Peak energy (EPk)	115 V (Ws)	4,200	9,700	25,500	
	230 V (Ws)	3,800	7,400	18,100	
	400 V (Ws)	1,900	4,900	11,400	
	480 V (Ws)	1,900	4,300	10,500	
Reference	Connection cable (m)	0.75	VW3A7602R07	VW3A7603R07	VW3A7604R07
		2	VW3A7602R20	VW3A7603R20	VW3A7604R20
		3	–	VW3A7603R30	VW3A7604R30

For use with Servo drives		LXM16DU01M2X, LXM16DU02M2X, LXM16DU04M2X, LXM16DU07M2X, LXM16DU10M2X, LXM16DU15M2X LXM16MU01M2X, LXM16MU02M2X, LXM16MU04M2X, LXM16MU07M2X, LXM16MU10M2X, LXM16MU15M2X				
Ohmic value (W)		72			100	
Continuous power (PPr)		100	200	400	100	
Peak energy (EPk)	115 V (Ws)	5,500	14,600	36,600	4,400	
	230 V (Ws)	3,700	9,600	24,700	4,400	
	400 V (Ws)	2,500	6,600	16,200	2,900	
	480 V (Ws)	2,300	6,000	15,500	2,900	
Reference	Connection cable (m)	0.75	VW3A7605R07	VW3A7606R07	VW3A7607R07	VW3A7608R07
		2	–	VW3A7606R20	VW3A7607R20	–
		3	VW3A7605R30	VW3A7606R30	VW3A7607R30	VW3A7608R30

Note: The total continuous power dissipated in the external braking resistor(s) must be less than or equal to the nominal power of the Lexium 16 servo drive.

Easy Lexium 16D Motion control - Additional EMC input filters



Additional EMC filters		
For servo drive	LXM16DU01M2X, LXM16DU02M2X, LXM16DU04M2X, LXM16MU01M2X, LXM16MU02M2X, LXM16MU04M2X	LXM16DU07M2X, LXM16DU10M2X, LXM16DU15M2X, LXM16MU07M2X, LXM16MU10M2X, LXM16MU15M2X
Maximum servo motor shielded cable length (1)	25	25
Reference	VW3A4420	VW3A4421

(1) Conforming to EN 55011 class A Gr2, IEC/EN 61800-3 category C3 in environment 2. Switching frequency 8 kHz.

Easy Lexium 16D Motion control - Motor starters, Protection using class J fuses



Motor starters - Combinations

	Nominal power (kW)	0.1	0.2	0.4
Servo drive	Main number of phase	1	1	1
	Reference	① LXM16DU01M2X LXM16MU01M2X	LXM16DU02M2X LXM16MU02M2X	LXM16DU04M2X LXM16MU04M2X
Circuit-breaker	Rating (A)	10	10	10
	Reference	② GV2P14		
Contactor	Reference (1) (2)	③ LC1K0610●●		LC1K09●●

	Nominal power (kW)	0.75	1	1.5
Servo drive	Main number of phase	1	1	1
	Reference	① LXM16DU07M2X LXM16MU07M2X	LXM16DU10M2X LXM16MU10M2X	LXM16DU15M2X LXM16MU15M2X
Circuit-breaker	Rating (A)	10	10	14
	Reference	② GV2P14	GV2P14	GV2P16
Contactor	Reference (1) (2)	③ LC1K09●●	LC1K12●●	LC1D18●●

(1) Composition of the contactors:
 LC1K0610●●: 3 poles + 1 N/O auxiliary contact
 LC1K09●●, LC1K12●●: 4 poles
 LC1D18●●: 3 poles + 1 N/O auxiliary contact + 1 N/C auxiliary contact
 Please refer to [Contractors and Protection Relays](#) page on our web site.

(2) Replace ●● with the control circuit voltage code given in the table below:

LC1K	Volts ~	220 Volts ~	230 Volts ~	240 Volts ~
	50/60 Hz	M7	P7	U7
LC1D	Volts ~	220/230 Volts ~	230 Volts ~	230/240 Volts ~
	50 Hz	M5	P5	U5
	60 Hz	M6	–	U6
	50/60 Hz	M7	P7	U7

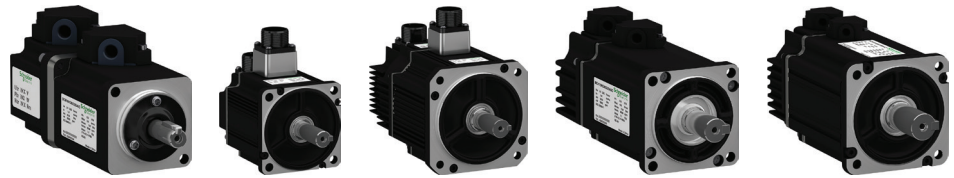
For other available voltages between 24 V and 660 V, or a DC control circuit, please contact our Customer Care Center

Protection using class J fuses (UL certification)

Mains supply voltage: 200...230 V a 50/60Hz

Fuse to be placed upstream (A)	5	5	20	20	25	40	
Servo drive	Nominal power (kW)	0.1	0.2	0.4	0.75	1	1.5
	Reference	LXM16DU01M2X LXM16MU01M2X	LXM16DU02M2X LXM16MU02M2X	LXM16DU04M2X LXM16MU04M2X	LXM16DU07M2X LXM16MU07M2X	LXM16DU10M2X LXM16MU10M2X	LXM16DU15M2X LXM16MU15M2X

Easy Lexium 16D Motion control - BCH16 servo motors



BCH16 servo motors		B	C	H	16	•	•	••	•	•	•	•	•	C	2
Brushless servo motor															
Inertia	Low inertia					L									
	High inertia					H									
Flange size (mm)	40						B								
	60						D								
	80						F								
	100						H								
	130						M								
Rated output (W)	100							01							
	200							02							
	400							04							
	750							07							
	850							08							
	1 kW							10							
	1.5 kW							15							
Power supply ~ 220 V Winding type (rpm)	1000/1500								1						
	2000								2						
	3000								3						
Shaft end	Keyed shaft (shaft & housing IP 65)									3					
Encoder	2500 ppr incremental encoder										0				
	23 bit high resolution										2				
Holding brake	Without brake											A			
	With brake (option)											F			
Connections	Free leads with connectors (BCH16•B, BCH16•D, BCH16•F motors only)												5		
	MIL connectors (BCH16•H, BCH16•M, BCH16•R motors only)												6		
Mechanical motor design	Motor compatible with Asian style mounting standards													C	
Hardware Version	RS02														2

Easy Lexium 16D Motion control - Connection components



Power cordsets - Shielded and Unshielded

Designation 1	Equipped with one plastic connector (servo motor side), and a free lead (servo drive side)							
For use	From servo drive	LXM16DU01M2X, LXM16DU02M2X, LXM16DU04M2X, LXM16DU07M2X LXM16MU01M2X, LXM16MU02M2X, LXM16MU04M2X, LXM16MU07M2X						
	To servo motor	BCH16LB01330●5C2, BCH16HD02330●5C2, BCH16HD04330●5C2, BCH16HF07330●5C2, BCH16LF10330●5C2 BCH16LB01332●5C2, BCH16HD02332●5C2, BCH16HD04332●5C2, BCH16HF07332●5C2, BCH16LF10332●5C2						
For cable cross-section(mm²)		4G0.75						
Length (m)		1.5	3	5	10	15	20	25
Reference	Unshielded power cordsets	VW3M5A11RA5	VW3M5A11R03	VW3M5A11R05	VW3M5A11R10	VW3M5A11R15	VW3M5A11R20	VW3M5A11R25
	Shielded power cordsets	–	VW3M5A11R03S	VW3M5A11R05S	VW3M5A11R10S	VW3M5A11R15S	VW3M5A11R20S	–

Designation 2	Equipped with one MIL connector (servo motor side), and a free lead (servo drive side)							
For use	From servo drive	LXM16DU10M2X, LXM16DU15M2X LXM16MU10M2X, LXM16MU15M2X						
	To servo motor	BCH16HM08130A6C2, BCH16LH10330A6C2, BCH16HM10230A6C2, BCH16HM15230A6C2 BCH16HM08132A6C2, BCH16LH10332A6C2, BCH16HM10232A6C2, BCH16HM15232A6C2						
For cable cross-section(mm²)		4G2						
Length (m)		1.5	3	5	10	15	20	25
Reference	Unshielded power cordsets	VW3M5A21RA5	VW3M5A21R03	VW3M5A21R05	VW3M5A21R10	VW3M5A21R15	VW3M5A21R20	VW3M5A21R25
	Shielded power cordsets	VW3M5A21RA5S	–	–	VW3M5A21R10S	VW3M5A21R15S	VW3M5A21R20S	VW3M5A21R25S

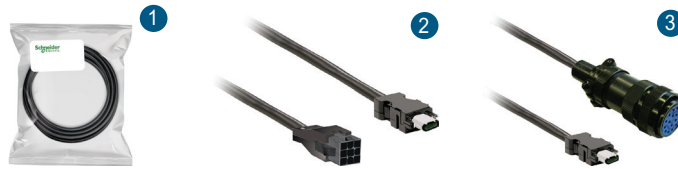
Designation 3	Equipped with one MIL connector (servo motor side), and a free lead (servo drive side) Integrating brake control							
For use	From servo drive	LXM16DU10M2X, LXM16DU15M2X LXM16MU10M2X, LXM16MU15M2X						
	To servo motor	BCH16HM08130F6C2, BCH16LH10330F6C2, BCH16HM10230F6C2, BCH16HM15230F6C2 BCH16HM08132F6C2, BCH16LH10332F6C2, BCH16HM10232F6C2, BCH16HM15232F6C2						
For cable cross-section(mm²)		6G2						
Length (m)		1.5	3	5	10	15	20	25
Reference	Unshielded power cordsets	VW3M5A22RA5	VW3M5A22R03	VW3M5A22R05	VW3M5A22R10	VW3M5A22R15	VW3M5A22R20	VW3M5A22R25
	Shielded power cordsets	VW3M5A22RA5S	VW3M5A22R03S	VW3M5A22R05S	VW3M5A22R10S	VW3M5A22R15S	VW3M5A22R20S	VW3M5A22R25S

Motor power connectors

Designation	Plastic connector 1	MIL connector 2
Use for	for creating power cordsets	
For use with	BCH16LB01330●5C2, BCH16HD02330●5C2, BCH16HD04330●5C2, BCH16HF07330●5C2, BCH16LF10330●5C2 BCH16LB01332●5C2, BCH16HD02332●5C2, BCH16HD04332●5C2, BCH16HF07332●5C2, BCH16LF10332●5C2	BCH16HM08130A6C2, BCH16LH10330A6C2, BCH16HM10230A6C2, BCH16HM15230A6C2 BCH16HM08132A6C2, BCH16LH10332A6C2, BCH16HM10232A6C2, BCH16HM15232A6C2
For cable cross-section(mm²)	4G0.75	
Reference	VW3M5A11	VW3M5A21



Easy Lexium 16D Motion control - Connection components



Unshielded brake control cordsets

Designation	Equipped with one plastic connector (servo motor side), and a free lead (servo drive side) ①						
For use	From servo drive	LXM16DU01M2X, LXM16DU02M2X, LXM16DU04M2X, LXM16DU07M2X LXM16MU01M2X, LXM16MU02M2X, LXM16MU04M2X, LXM16MU07M2X					
	To servo motor	BCH16LB01330F5C2, BCH16HD02330F5C2, BCH16HD04330F5C2, BCH16HF07330F5C2, BCH16LF10330F5C2 BCH16LB01332F5C2, BCH16HD02332F5C2, BCH16HD04332F5C2, BCH16HF07332F5C2, BCH16LF10332F5C2					
For cable cross-section(mm²)	2 x 0.5						
Length (m)	1.5	3	5	10	15	20	25
Reference	VW3M5A12RA5	VW3M5A12R03	VW3M5A12R05	VW3M5A12R10	VW3M5A12R15	VW3M5A12R20	VW3M5A12R25

Brake connectors

Designation	Plastic connector ①	Mil connector ③
Use for	for creating brake control cordsets	for creating power & brake control cordsets
For use with	BCH16LB01330F5C2, BCH16HD02330F5C2, BCH16HD04330F5C2, BCH16HF07330F5C2, BCH16LF10330F5C2	BCH16HM08130F6C2, BCH16LH10330F6C2, BCH16HM10230F6C2, BCH16HM15230F6C2
	BCH16LB01332F5C2, BCH16HD02332F5C2, BCH16HD04332F5C2, BCH16HF07332F5C2, BCH16LF10332F5C2	BCH16HM08132F6C2, BCH16LH10332F6C2, BCH16HM10232F6C2, BCH16HM15232F6C2
For cable cross-section(mm²)	2 x 0.5	6G2.0
Reference	VW3M5A12	VW3M5A22

Shielded encoder cordsets

Designation	Equipped with one plastic connector (servo motor side), and VW3M4A31 connector (servo drive side) ②						
For use	From servo drive	LXM16DU01M2X, LXM16DU02M2X, LXM16DU04M2X, LXM16DU07M2X LXM16MU01M2X, LXM16MU02M2X, LXM16MU04M2X, LXM16MU07M2X					
	To servo motor	BCH16LB01330●5C2, BCH16HD02330●5C2, BCH16HD04330●5C2, BCH16HF07330●5C2, BCH16LF10330●5C2					
For cable cross-section(mm²)	2 x 0.5 + 3 x 2 x 0.2						
Length (m)	1.5	3	5	10	15	20	25
Reference	VW3M8A11RA5	VW3M8A11R03	VW3M8A11R05	VW3M8A11R10	VW3M8A11R15	VW3M8A11R20	VW3M8A11R25

Designation	Equipped with one plastic connector (servo motor side), and VW3M4A31 connector (servo drive side) ②						
For use	From servo drive	LXM16DU01M2X, LXM16DU02M2X, LXM16DU04M2X, LXM16DU07M2X LXM16MU01M2X, LXM16MU02M2X, LXM16MU04M2X, LXM16MU07M2X					
	To servo motor	BCH16LB01332●5C2, BCH16HD02332●5C2, BCH16HD04332●5C2, BCH16HF07332●5C2, BCH16LF10332●5C2					
For cable cross-section(mm²)	2 x 0.5 + 1 x 2 x 0.2						
Length (m)	1.5	3	5	10	15	20	25
Reference	VW3M8A12RA5	VW3M8A12R03	VW3M8A12R05	VW3M8A12R10	VW3M8A12R15	–	VW3M8A12R25

Designation	Equipped with one MIL connector (servo motor side), and VW3M4A31 connector (servo drive side) ③						
For use	From servo drive	LXM16DU10M2X, LXM16DU15M2X LXM16MU10M2X, LXM16MU15M2X					
	To servo motor	BCH16HM08130●6C2, BCH16LH10330●6C2, BCH16HM10230●6C2, BCH16HM15230●6C2					
For cable cross-section(mm²)	2 x 0.5 + 3 x 2 x 0.2						
Length (m)	1.5	3	5	10	15	20	25
Reference	VW3M8A21RA5	VW3M8A21R03	VW3M8A21R05	VW3M8A21R10	VW3M8A21R15	VW3M8A21R20	VW3M8A21R25

Designation	Equipped with one MIL connector (servo motor side), and VW3M4A31 connector (servo drive side) ③						
For use	From servo drive	LXM16DU10M2X, LXM16DU15M2X LXM16MU10M2X, LXM16MU15M2X					
	To servo motor	BCH16HM08132●6C2, BCH16LH10332●6C2, BCH16HM10232●6C2, BCH16HM15232●6C2					
For cable cross-section(mm²)	2 x 0.5 + 1 x 2 x 0.2						
Length (m)	1.5	3	5	10	15	20	25
Reference	VW3M8A22RA5	VW3M8A22R03	VW3M8A22R05	VW3M8A22R10	VW3M8A22R15	–	VW3M8A22R25

Easy Lexium 16D Motion control - Connection components



Motor encoder connectors		
Designation	Plastic connector 4	Mil connector 3
Use for	for creating encoder cordsets	
For use with	BCH16LB01330●5C2, BCH16HD02330●5C2, BCH16HD04330●5C2, BCH16HF07330●5C2, BCH16LF10330●5C2 BCH16LB01332●5C2, BCH16HD02332●5C2, BCH16HD04332●5C2, BCH16HF07332●5C2, BCH16LF10332●5C2	BCH16HM08130●6C2, BCH16LH10330●6C2, BCH16HM10230●6C2, BCH16HM15230●6C2 BCH16HM08132●6C2, BCH16LH10332●6C2, BCH16HM10232●6C2, BCH16HM15232●6C2
For cable cross-section(mm²)	2 x 0.5 + 3 x 2 x 0.2 2 x 0.5 + 1 x 2 x 0.2	
Reference	VW3M8A11	VW3M8A21

Easy Lexium 18 Motion control



Lexium 18 servo drives and BCH18 servo motors combinations - Single-phase supply voltage: 200/240 VAC

Power output (kW)	0.05				
Dimensions: W x H x D (mm)	48 x 155.5 x 166.5				
Nominal speed of rotation (min-1)	3000				
Nominal torque (N.m)	0.16				
With holding brake	No	No	Yes	Yes	Yes
Inertia -without holding brake (kg.cm²)	0.020	0.040	0.027	0.046	
Motor inertia type	Low	Middle	Low	Middle	
Reference	Servo drive reference ①	LXM18PCU01M2X LXM18PDU01M2X			
	Servo motor reference ②	BCH18LBA5332A5C	BCH18MBA5332A5C	BCH18LBA5332F5C	BCH18MBA5332F5C

Power output (kW)	0.1					
Dimensions: W x H x D (mm)	48 x 155.5 x 166.5					
Nominal speed of rotation (min-1)	3000					
Nominal torque (N.m)	0.32					
With holding brake	No	No	No	Yes	Yes	Yes
Inertia -without holding brake (kg.cm²)	0.03	0.07	0.16	0.036	0.076	0.22
Motor inertia type	Low	Middle	Middle	Low	Middle	Middle
Reference	Servo drive reference ①	LXM18PCU01M2X LXM18PDU01M2X				
	Servo motor reference ②	BCH18LB01332A5C	BCH18MB01332A5C	BCH18MD01332A5C	BCH18LB01332F5C	BCH18MB01332F5C

Power output (kW)	0.2					
Dimensions: W x H x D (mm)	48 x 155.5 x 166.5					
Nominal speed of rotation (min-1)	3000					
Nominal torque (N.m)	0.64					
With holding brake	No	No	No	Yes	Yes	Yes
Inertia -without holding brake (kg.cm²)	0.150	0.268	0.550	0.21	0.33	0.68
Motor inertia type	Low	Middle	Middle	Low	Middle	Middle
Reference	Servo drive reference ①	LXM18PCU02M2X LXM18PDU02M2X				
	Servo motor reference ②	BCH18LD02332A5C	BCH18MD02332A5C	BCH18MF02332A5C	BCH18LD02332F5C	BCH18MD02332F5C

Power output (kW)	0.4					
Dimensions: W x H x D (mm)	48 x 155.5 x 166.5					
Nominal speed of rotation (min-1)	3000					
Nominal torque (N.m)	1.27					
With holding brake	No	No	No	Yes	Yes	Yes
Inertia -without holding brake (kg.cm²)	0.250	0.478	1.190	0.31	0.54	1.33
Motor inertia type	Low	Middle	Middle	Low	Middle	Middle
Reference	Servo drive reference ①	LXM18PCU04M2X LXM18PDU04M2X				
	Servo motor reference ②	BCH18LD04332A5C	BCH18MD04332A5C	BCH18MF04332A5C	BCH18LD04332F5C	BCH18MD04332F5C

Power output (kW)	0.75			0.85		
Dimensions: W x H x D (mm)	78 x 155.5 x 166.5			78 x 155.5 x 166.5		
Nominal speed of rotation (min-1)	3000			1500		
Nominal torque (N.m)	2.39			5.39		
With holding brake	No	No	Yes	Yes	No	Yes
Inertia -without holding brake (kg.cm²)	0.78	1.790	0.930	1.90	14.00	
Motor inertia type	Low	Middle	Low	Middle	Middle	Middle
Reference	Servo drive reference ①	LXM18PCU07M2X LXM18PDU07M2X			LXM18PCU10M2X LXM18PDU10M2X	
	Servo motor reference ②	BCH18LF07332A5C	BCH18MF07332A5C	BCH18LF07332F5C	BCH18MF07332F5C	BCH18MM08132A6C

8

Easy Lexium 18 Motion control



Lexium 18 servo drives and BCH18 servo motors combinations - Single-phase supply voltage: 200/240 VAC

Power output (kW)	1.00					
Dimensions: W x H x D (mm)	78 x 155.5 x 166.5					
Nominal speed of rotation (min-1)	3000					
Nominal torque (N.m)	3.18					
With holding brake	No	No	No	Yes	Yes	Yes
Inertia -without holding brake (kg.cm²)	0.0994	1.430	2.16	1.12	1.53	2.32
Motor inertia type	Low	Low	Middle	Low	Low	Middle
Reference	Servo drive reference ①	LXM18PCU10M2X LXM18PDU10M2X				
	Servo motor reference ②	BCH18LF10332A5C	BCH18LH10332A6C	BCH18MF10332A5C	BCH18LF10332F5C	BCH18LH10332F6C BCH18MF10332F5C

Power output (kW)	1.30		1.50		
Dimensions: W x H x D (mm)	78 x 155.5 x 166.5				
Nominal speed of rotation (min-1)	1500		3000		
Nominal torque (N.m)	8.34		4.77		
With holding brake	No	No	Yes	Yes	
Inertia -without holding brake (kg.cm²)	2.09		2.210	20.88	21.54
Motor inertia type	Low		Middle	Low	Middle
Reference	Servo drive reference ①	LXM18PCU15M2X LXM18PDU15M2X			
	Servo motor reference ②	BCH18LH15332A6C		BCH18LH15332F6C	BCH18MM13132A6C BCH18MM13132F6C

Easy Lexium 18 Motion control - Connection accessories



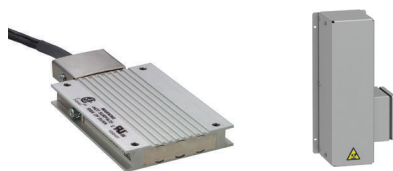
Connectors			
Designation	Connector set for power & motor	IO connector	Connector kit for encoder
Description	Servo drive power input and output connector kit	SCSI 50-pin IO connector kit	Firewire 1394 6-pin encoder connector kit
For use with	LXM18PCU●●●, LXM18PDU●●●	LXM18PCU●●●, LXM18PDU●●●	LXM18PCU●●●, LXM18PDU●●●
Weight (kg)	0.012	0.300	0.008
Reference	VW3M4B01	VW3M4B11	VW3M4B21



Modbus TCP network cordsets									
Designation	Straight shielded twisted pair cordsets (conforming to EIA/TIA-568, category 5 and IEC1180/EN50173, class D standards)			Crossed shielded twisted pair cordsets		Straight shielded twisted pair cordsets (conforming to UL and CSA 22.1 standards)			Crossed shielded twisted pair cordsets
Description	2 RJ45 connectors								
Length (m) (1)	2	5	12	5	15	2	5	15	5
Reference	490NTW00002	490NTW00005	490NTW00012	490NTC00005	490NTC00015	490NTW00002U	490NTW00005U	490NTW00012U	490NTC00005U

(1) Also available in 40 and 80 m

Easy Lexium 18 Motion control - External braking resistor



External braking resistors

Power rating range	Ohmic value (Ω)	Continuous power (W)	Connection	Degree of protection	Reference
100 W, 200 W, 400 W	72	400	3 m cable (9.84 ft)	IP65	VW3A7607R30
750 W, 1 kW, 1.5 kW	27	400	0.75 m cable (2.46 ft)	IP65	VW3A7603R07
2 kW, 3 kW	16	960	M6 terminal	IP20 UL	VW3A7733

Note: The total continuous power dissipated in the external braking resistor(s) must be less than or equal to the nominal power of the Lexium 18P/18E servo drive.

Easy Lexium 18 Motion control - Additional EMC input filters



Additional EMC filters - Single phase 220Vac, 200Vac -15%...240Vac +10%

For servo drive	LXM18PCU01M2X, LXM18PDU01M2X, LXM18PCU02M2X, LXM18PDU02M2X LXM18PCU04M2X, LXM18PDU04M2X, LXM18PCU07M2X, LXM18PDU07M2X
Nominal power	0.5 to 0.75 kW (0.13 to 1.01 hp)
Line current	9 A
Reference	VW3A4420

For servo drive	LXM18PCU10M2X, LXM18PDU10M2X LXM18PCU15M2X, LXM18PDU15M2X
Nominal power	1 and 1.5 kW (1.34 and 2.01 hp)
Line current	16 A
Reference	VW3A4421

Additional EMC filters - Three-phase supply voltage: 220Vac, 200Vac -15%...240Vac +10%

For servo drive	LXM18PCU20M3X, LXM18PDU20M3X LXM18PCU30M3X, LXM18PDU30M3X
Nominal power	2 and 3 kW (2.68 and 4.02 hp)
Line current	25 A
Reference	VW3A4423

Easy Lexium 18 Motion control - Motor starters, Protection using class J fuses



Motor starters - Combinations							
Servo drive	Nominal power (kW)	0.1/0.13	0.2/0.27	0.4/0.54	0.75/1.01	1.0/1.34	1.5/2.01
	Main number of phase	1	1	1	1	1	1
Reference	①	LXM18PCU01M2X	LXM18PCU02M2X	LXM18PCU04M2X	LXM18PCU07M2X	LXM18PCU10M2X	LXM18PCU15M2X
	③	LXM18PDU01M2X	LXM18PDU02M2X	LXM18PDU04M2X	LXM18PDU07M2X	LXM18PDU10M2X	LXM18PDU15M2X
Circuit-breaker	Rating (A)	10	10	10	10	10	14
	Reference	② GV2P14					
Contactor	Reference (1) (2)	③ LC1K0610●●			LC1K09●●		LC1D18●●

Servo drive	Nominal power (kW)	2.0/2.68	3.0/4.02
	Main number of phase	3	3
Reference	①	LXM18PCU20M3X	LXM18PCU30M3X
	③	LXM18PDU20M3X	LXM18PDU30M3X
Circuit-breaker	Rating (A)	14	18
	Reference	② GV2P16	GV2P20
Contactor	Reference (1) (2)	③ LC1D18●●	LC1D32●●

(1) Composition of the contactors:
 LC1K0610●●: 3 poles + 1 N/O auxiliary contact
 LC1K09●●, LC1K12●●: 4 poles
 LC1D18●●: 3 poles + 1 N/O auxiliary contact + 1 N/C auxiliary contact
 Please refer to [Contractors and Protection Relays](#) page on our web site.

(2) Replace ●● with the control circuit voltage code given in the table below:

LC1K	Volts ~	220 Volts ~	240 Volts ~
	50/60 Hz	P7	U7
LC1D	Volts ~	230 Volts ~	230/240 Volts ~
	50 Hz	P5	U5
	60 Hz	–	U6
	50/60 Hz	P7	U7

For other available voltages between 24 V and 660 V, or a DC control circuit, please contact our Customer Care Center

Protection using class J fuses (UL certification)

Mains supply voltage: Single phase 200...240 V a 50/60Hz

Fuse to be placed upstream (A)	5	20	20	40	40	40	
Servo drive	Nominal power (kW)	0.1/0.13	0.2/0.27	0.4/0.54	0.75/1.01	1.0/1.34	1.5/2.01
	Reference	LXM18PCU01M2X LXM18PDU01M2X	LXM18PCU02M2X LXM18PDU02M2X	LXM18PCU04M2X LXM18PDU04M2X	LXM18PCU07M2X LXM18PDU07M2X	LXM18PCU10M2X LXM18PDU10M2X	LXM18PCU15M2X LXM18PDU15M2X

Mains supply voltage: Three-phase 200...240 V a 50/60Hz

Fuse to be placed upstream (A)	80	80	
Servo drive	Nominal power (kW)	2.0/2.68	3.0/4.02
	Reference	LXM18PCU20M3X LXM18PDU20M3X	LXM18PCU30M3X LXM18PDU30M3X

Easy Lexium 18 Motion control - BCH18 servo motors



BCH18 servo motors		B	C	H	18	•	•	••	•	•	•	•	•	•	C	
Inertia	Low inertia					L										
	High inertia					M										
Flange size (mm)	40 mm (1.58 in) – Shaft diameter 8 mm (0.31 in)								B							
	60 mm (2.36 in) – Shaft diameter 8 mm (0.31 in) or 14 mm (0.55 in)								D							
	80 mm (3.15 in) – Shaft diameter 14 mm (0.55 in) or 19 mm (0.75 in)								F							
	100 mm (3.94 in) – Shaft diameter 22 mm (0.87 in)								H							
	130 mm (5.12 in) – Shaft diameter 22 mm (0.87 in), 24 mm (0.94 in) or 28 mm (1.102 in)								M							
	180 mm (7.09 in) – Shaft diameter 35 mm (1.38 in)								R							
Nominal power	50 W (0.06 hp)									A5						
	100 W (0.13 hp)									01						
	200 W (0.16 hp)									02						
	400 W (0.53 hp)									04						
	750 W (1.00 hp)									07						
	850 W (1.13 hp)									08						
	1 kW (1.34 hp)									10						
	1.3 kW (1.74 hp)									13						
	1.5 kW (2.01 hp)									15						
	1.8 kW (2.41 hp)									18						
	2.0 kW (2.68 hp)									20						
	2.4 kW (3.22 hp)									24						
3.0 kW (4.02 hp)									30							
Power supply ~ 220 V Winding type (rpm)	Optimized in terms of torque (1000 rpm/1500 rpm)									1						
	Optimized in terms of torque and speed of rotation (2000 rpm)									2						
	Optimized in terms of speed of rotation (3000 rpm)									3						
Shaft end	Parallel keyed shaft (shaft & housing IP 65)										3					
Encoder	23 bit optic incremental encoder											2				
Holding brake	Without holding brake												A			
	With holding brake												F			
Connections	Micro plastic connectors													5		
	Military connectors													6		
Mechanical motor design	Motor compatible with Asian style mounting standards														C	

Easy Lexium 18 Motion control - Connection components



Unshielded Power cables

Toward load, Plastic connector, size 0 - item 1

Designation		Equipped with one plastic connector Size 0 (Motor end)						
For use	From servo drive	LXM18P●U01M2X						
	To servo motor	BCH18LB●●, BCH18MB●●						
For cable cross-section(mm²)		4G*0.34mm ² (22 AWG)						
Length (m)		1.5	3	5	10	15	20	25
Reference		VW3M5A11RA5	VW3M5A11R03	VW3M5A11R05	VW3M5A11R10	VW3M5A11R15	VW3M5A11R20	VW3M5A11R25

Designation		Equipped with one plastic connector size 0, with brake (Motor end)						
For use	From servo drive	LXM18P●U01M2X						
	To servo motor	BCH18LB●●, BCH18MB●●						
For cable cross-section(mm²)		6G*0.34mm ² (22 AWG)						
Length (m)		1.5	3	5	10	15	20	25
Reference		VW3M5A21RA5	VW3M5A21R03	VW3M5A21R05	VW3M5A21R10	VW3M5A21R15	VW3M5A21R20	VW3M5A21R25

Toward back, Plastic connector, Size 0 - item 1

Designation		Equipped with one plastic connector size 0 (Motor end)						
For use	From servo drive	LXM18P●U01M2X						
	To servo motor	BCH18LB●●, BCH18MB●●						
For cable cross-section(mm²)		4G*0.34mm ² (22 AWG)						
Length (m)		1.5	3	5	10	15	20	25
Reference		VW3M5B03RA5	VW3M5B03R03	VW3M5B03R05	VW3M5B03R10	VW3M5B03R15	VW3M5B03R20	VW3M5B03R25

Designation		Equipped with one plastic connector size 0, with brake (Motor end)						
For use	From servo drive	LXM18P●U01M2X						
	To servo motor	BCH18LB●●, BCH18MB●●						
For cable cross-section(mm²)		6G*0.34mm ² (22 AWG)						
Length (m)		1.5	3	5	10	15	20	25
Reference		VW3M5B04RA5	VW3M5B04R03	VW3M5B04R05	VW3M5B04R10	VW3M5B04R15	VW3M5B04R20	VW3M5B04R25

Toward load, Plastic connector, Size 1- item 2

Designation		Equipped with one plastic connector size 1 (Motor end)						
For use	From servo drive	LXM18P●U01M2X, LXM18P●U02M2X, LXM18P●U04M2X, LXM18P●U07M2X, LXM18P●U10M2X						
	To servo motor	BCH18LD●●, BCH18LF●●, BCH18MD●●, BCH18MF●●						
For cable cross-section(mm²)		4G*0.75mm ² (18 AWG)						
Length (m)		1.5	3	5	10	15	20	25
Reference		VW3M5B11RA5	VW3M5B11R03	VW3M5B11R05	VW3M5B11R10	VW3M5B11R15	VW3M5B11R20	VW3M5B11R25

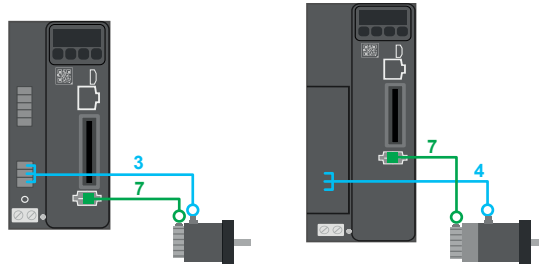
Designation		Equipped with one plastic connector size 1, with brake (Motor end)						
For use	From servo drive	LXM18P●U01M2X, LXM18P●U02M2X, LXM18P●U04M2X, LXM18P●U07M2X, LXM18P●U10M2X						
	To servo motor	BCH18LD●●, BCH18LF●●, BCH18MD●●, BCH18MF●●						
For cable cross-section(mm²)		4G*0.75mm ² (18 AWG) + 2*0.2mm ² (32 AWG)						
Length (m)		1.5	3	5	10	15	20	25
Reference		VW3M5B12RA5	VW3M5B12R03	VW3M5B12R05	VW3M5B12R10	VW3M5B12R15	VW3M5B12R20	VW3M5B12R25

Toward back, Plastic connector, Size 1 - item 2

Designation		Equipped with one plastic connector size 1 (Motor end)						
For use	From servo drive	LXM18P●U01M2X, LXM18P●U02M2X, LXM18P●U04M2X, LXM18P●U07M2X, LXM18P●U10M2X						
	To servo motor	BCH18LD●●, BCH18LF●●, BCH18MD●●, BCH18MF●●						
For cable cross-section(mm²)		4G*0.75mm ² (18 AWG)						
Length (m)		1.5	3	5	10	15	20	25
Reference		VW3M5B13RA5	VW3M5B13R03	VW3M5B13R05	VW3M5B13R10	VW3M5B13R15	VW3M5B13R20	VW3M5B13R25

Designation		Equipped with one plastic connector size 1, with brake (Motor end)						
For use	From servo drive	LXM18P●U01M2X, LXM18P●U02M2X, LXM18P●U04M2X, LXM18P●U07M2X, LXM18P●U10M2X						
	To servo motor	BCH18LD●●, BCH18LF●●, BCH18MD●●, BCH18MF●●						
For cable cross-section(mm²)		4G*0.75mm ² (18 AWG) + 2*0.2mm ² (32 AWG)						
Length (m)		1.5	3	5	10	15	20	25
Reference		VW3M5B14RA5	VW3M5B14R03	VW3M5B14R05	VW3M5B14R10	VW3M5B14R15	VW3M5B14R20	VW3M5B14R25

Easy Lexium 18 Motion control - Connection components



Unshielded Power cables

Military connector, Size 1 - item 3

Designation	Equipped with one military connector size 1 (Motor end), and free wires (servo drive side)						
For use	From servo drive	LXM18P●U10M2X, LXM18P●U15M2X					
	To servo motor	BCH18LH103●●, BCH18LH153●●, BCH18MM081●●, BCH18MM131●●					
For cable cross-section(mm²)	4G*1.5mm ² (16 AWG)						
Length (m)	1.5	3	5	10	15	20	25
Reference	VW3M5B21RA5	VW3M5B21R03	VW3M5B21R05	VW3M5B21R10	VW3M5B21R15	VW3M5B21R20	VW3M5B21R25

Designation	Equipped with one military connector size 1, with brake (Motor end) and free wires (servo drive side)						
For use	From servo drive	LXM18P●U01M2X, LXM18P●U02M2X, LXM18P●U04M2X, LXM18P●U07M2X, LXM18P●U10M2X					
	To servo motor	BCH18LH103●●, BCH18LH153●●, BCH18MM081●●, BCH18MM131●●					
For cable cross-section(mm²)	4G*1.5mm ² (16 AWG) +2*0.5mm ² (20 AWG)						
Length (m)	1.5	3	5	10	15	20	25
Reference	VW3M5B22RA5	VW3M5B22R03	VW3M5B22R05	VW3M5B22R10	VW3M5B22R15	VW3M5B22R20	VW3M5B22R25

Military connector, Size 2 - item 4

Designation	Equipped with one military connector size 2 (Motor end) and free wires (servo drive side)						
For use	From servo drive	LXM18P●U20M2X, LXM18P●U30M2X, LXM18P●U20M3X, LXM18P●U30M3X					
	To servo motor	BCH18LH203●●, BCH18LM303●●, BCH18MM181●●					
For cable cross-section(mm²)	4G*2.5mm ² (14 AWG)						
Length (m)	1.5	3	5	10	15	20	25
Reference	VW3M5B31RA5	VW3M5B31R03	VW3M5B31R05	VW3M5B31R10	VW3M5B31R15	VW3M5B31R20	VW3M5B31R25

Designation	Equipped with one military connector size 2, with brake (Motor end) and free wires (servo drive side)						
For use	From servo drive	LXM18P●U20M2X, LXM18P●U30M2X, LXM18P●U20M3X, LXM18P●U30M3X					
	To servo motor	BCH18LH203●●, BCH18LM303●●, BCH18MM181●●					
For cable cross-section(mm²)	4G*2.5mm ² (14 AWG) + 2*0.5mm ² (20 AWG)						
Length (m)	1.5	3	5	10	15	20	25
Reference	VW3M5B32RA5	VW3M5B32R03	VW3M5B32R05	VW3M5B32R10	VW3M5B32R15	VW3M5B32R20	VW3M5B32R25

Military connector, Size 3 - item 4

Designation	Equipped with one military connector size 3 (Motor end) and free wires (servo drive side)						
For use	From servo drive	LXM18P●U30M2X, LXM18P●U30M3X					
	To servo motor	BCH18MR241●●					
For cable cross-section(mm²)	4G*2.5mm ² (14 AWG)						
Length (m)	1.5	3	5	10	15	20	25
Reference	VW3M5B41RA5	VW3M5B41R03	VW3M5B41R05	VW3M5B41R10	VW3M5B41R15	VW3M5B41R20	VW3M5B41R25

Designation	Equipped with one military connector size 3, with brake (Motor end) and free wires (servo drive side)						
For use	From servo drive	LXM18P●U30M2X, LXM18P●U30M3X					
	To servo motor	BCH18MR241●●					
For cable cross-section(mm²)	4G*2.5mm ² (14 AWG) + 2*0.5mm ² (20 AWG)						
Length (m)	1.5	3	5	10	15	20	25
Reference	VW3M5B42RA5	VW3M5B42R03	VW3M5B42R05	VW3M5B42R10	VW3M5B42R15	VW3M5B42R20	VW3M5B42R25

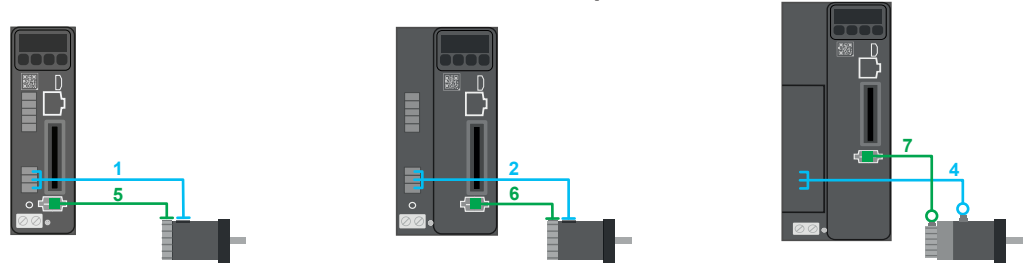
8



Motor power connector kits

Description	Motor power connector kit, plastic size 0	Motor power connector kit, toward load, plastic size 1	Motor power connector kit, toward back, plastic size 1	Motor power connector kit, military size 1	Motor power connector kit, military size 2
Reference	VW3M5B10	VW3M5B11	VW3M5B12	VW3M5B21	VW3M5B22

Easy Lexium 18 Motion control - Connection components



Shielded Encoder cables

Toward load, Plastic connector - item 5

Designation	Equipped with one plastic connector (Motor end) and Sunchu 6-pin connector (servo drive side)						
For use	From servo drive	LXM18P●U01M2X, LXM18P●U02M2X, LXM18P●U04M2X, LXM18P●U07M2X, LXM18P●U10M2X					
	To servo motor	40/60/80 mm flange (1.58/ 2.36/ 3.15 in flange)					
For cable cross-section(mm²)	2*0.5mm² (20 AWG) + 2*0.25 mm² (24 AWG)						
Length (m)	1.5	3	5	10	15	20	25
Reference	VW3M8B11RA5	VW3M8B11R03	VW3M8B11R05	VW3M8B11R10	VW3M8B11R15	VW3M8B11R20	VW3M8B11R25

Toward back, Plastic connector - item 6

Designation	Equipped with one plastic connector (Motor end) and Sunchu 6-pin connector (servo drive side)						
For use	From servo drive	LXM18P●U01M2X, LXM18P●U02M2X, LXM18P●U04M2X, LXM18P●U07M2X, LXM18P●U10M2X					
	To servo motor	40/60/80 mm flange (1.58/ 2.36/ 3.15 in flange)					
For cable cross-section(mm²)	2*0.5mm² (20 AWG) + 2*0.25 mm² (24 AWG)						
Length (m)	1.5	3	5	10	15	20	25
Reference	VW3M8B13RA5	VW3M8B13R03	VW3M8B13R05	VW3M8B13R10	VW3M8B13R15	VW3M8B13R20	VW3M8B13R25

Military connector, Size 1- item 7

Designation	Equipped with one military connector (Motor end) and Sunchu 6-pin connector (servo drive side)						
For use	From servo drive	LXM18P●U10M2X, LXM18P●U15M2X, LXM18P●U20M2X, LXM18P●U30M2X, LXM18P●U20M3X, LXM18P●U30M3X					
	To servo motor	100/130/180 mm flange (3.94/ 5.12/ 7.09 in flange)					
For cable cross-section(mm²)	2*0.5mm² (20 AWG) + 2*0.25 mm² (24 AWG)						
Length (m)	1.5	3	5	10	15	20	25
Reference	VW3M8B21RA5	VW3M8B21R03	VW3M8B21R05	VW3M8B21R10	VW3M8B21R15	VW3M8B21R20	VW3M8B21R25



Motor encoder connector kits

Description	Plastic	Military
Reference	VW3M8B11	VW3M8B21

Easy Lexium 26 servo drive and BCH2 servo motor combinations



Easy Lexium 26 servo drive and BCH2 servo motor: single-phase and 3-phase supply voltage: 200/240 VAC

Power output (kW)	0.05	0.1	0.2	0.3		
Nominal speed of rotation (min-1)	3000	3,000	3,000	1,000		
Nominal torque (N.m)	0.16	0.32	0.64	2.86		
Max peak torque (N.m)	0.48	0.96	1.92	8.59		
Inertia -without holding brake (kg.cm²)	0.054	0.075	0.16	6.63		
Motor inertia type	Medium	Medium	Low	Medium		
Dimensions: W x H x D (mm)	55 x 150 x 146					
Reference	Servo drive reference	LXM26DUA5M3X	LXM26DU01M3X	LXM26DU02M3X	LXM26DU04M3X	
	Servo motor reference	With holding brake	BCH2MBA533●F5C	BCH2MB0133●F5C	BCH2LD0233●F5C	BCH2MM0313●F6C
		Without holding brake	BCH2MBA533●A5C	BCH2MB0133●A5C	BCH2LD0233●A5C	BCH2MM0313●A6C

Power output (kW)	0.4	0.4	0.5	0.6		
Nominal speed of rotation (min-1)	3,000	3,000	2,000	1,000		
Nominal torque (N.m)	1.27	1.27	2.39	5.73		
Max peak torque (N.m)	3.81	3.81	7.16	17.19		
Inertia -without holding brake (kg.cm²)	0.27	0.67	6.63	6.63		
Motor inertia type	Low	Low	Medium	Medium		
Dimensions: W x H x D (mm)	55 x 150 x 146					
Reference	Servo drive reference	LXM26DU04M3X	LXM26DU04M3X	LXM26DU07M3X	LXM26DU07M3X	
	Servo motor reference	With holding brake	BCH2LD0433●F5C	BCH2LF0433●F5C	BCH2MM0523●F6C	BCH2MM0613●F6C
		Without holding brake	BCH2LD0433●A5C	BCH2LF0433●A5C	BCH2MM0523●A6C	BCH2MM0613●A6C

Power output (kW)	0.75	0.75	0.85	0.9		
Nominal speed of rotation (min-1)	3,000	3,000	1,500	1,000		
Nominal torque (N.m)	2.39	2.39	5.39	8.59		
Max peak torque (N.m)	7.16	7.16	13.8	25.77		
Inertia -without holding brake (kg.cm²)	1.19	1.54	13.5	9.7		
Motor inertia type	Low	High	Medium	Medium		
Dimensions: W x H x D (mm)	55 x 150 x 146		55 x 150 x 177			
Reference	Servo drive reference	LXM26DU07M3X	LXM26DU07M3X	LXM26DU10M3X	LXM26DU10M3X	
	Servo motor reference	With holding brake	BCH2LF0733●F5C	BCH2HF0733●F5C	BCH2MM0813●F6C	BCH2MM0913●F6C
		Without holding brake	BCH2LF0733●A5C	BCH2HF0733●A5C	BCH2MM0813●A6C	BCH2MM0913●A6C

Power output (kW)	1	1	1.5		
Nominal speed of rotation (min-1)	3,000	2,000	2,000		
Nominal torque (N.m)	3.18	4.77	7.16		
Max peak torque (N.m)	9.54	14.3	21.48		
Inertia -without holding brake (kg.cm²)	2.4	8.41	9.7		
Motor inertia type	Low	High	Medium		
Dimensions: W x H x D (mm)	55 x 150 x 177				
Reference	Servo drive reference	LXM26DU10M3X	LXM26DU10M3X	LXM26DU15M3X	
	Servo motor reference	With holding brake	BCH2LH1033●F6C	BCH2HM1023●F6C	BCH2MM1523●F6C
		Without holding brake	BCH2LH1033●A6C	BCH2HM1023●A6C	BCH2MM1523●A6C

Easy Lexium 26 servo drive and BCH2 servo motor combinations



Easy Lexium 26 servo drive and BCH2 servo motor: 3-phase supply voltage: 200/240 VAC

Power output (kW)	2.0	2.0	2.0	3.0	
Nominal speed of rotation (min-1)	3,000	2,000	2,000	1,500	
Nominal torque (N.m)	6.37	9.55	9.55	14.32	
Max peak torque (N.m)	19.11	28.65	28.65	42.97	
Inertia -without holding brake (kg.cm²)	4.26	13.5	34.68	53.56	
Motor inertia type	Low	Medium	High	Medium	
Dimensions: W x H x D (mm)	62 x 170 x 191.6			117.4 x 234 x 193	
Reference	Servo drive reference	LXM26DU20M3X	LXM26DU20M3X	LXM26DU20M3X	LXM26DU30M3X
	Servo motor reference	With holding brake BCH2LH2033●F6C	With holding brake BCH2MM2023●F6C	With holding brake BCH2HR2023●F6C	With holding brake BCH2MR3023●F6C
		Without holding brake BCH2LH2033●A6C	Without holding brake BCH2MM2023●A6C	Without holding brake BCH2HR2023●A6C	Without holding brake BCH2MR3023●A6C

Power output (kW)	3.0	3.5	4.5	
Nominal speed of rotation (min-1)	2,000	2,000	1,500	
Nominal torque (N.m)	19.1	16.7	26.65	
Max peak torque (N.m)	57.29	50.3	71.62	
Inertia -without holding brake (kg.cm²)	53.56	53.56	73.32	
Motor inertia type	Medium	Medium	Medium	
Dimensions: W x H x D (mm)	117.4 x 234 x 193			
Reference	Servo drive reference	LXM26DU30M3X	LXM26DU45M3X	LXM26DU45M3X
	Servo motor reference	With holding brake BCH2MR3013●F6C	With holding brake BCH2MR3523●F6C	With holding brake BCH2MR4513●F6C
		Without holding brake BCH2MR3013●A6C	Without holding brake BCH2MR3523●A6C	Without holding brake BCH2MR4513●A6C

Easy Lexium 26 servo drive - Configuration tools



SoMove setup software

Description	USB/RJ45 cordset ¹ Used to connect a PC to the device (Lexium Easy 26): this cable is 2.5 m/8.20 ft long and has a USB connector (PC end) and an RJ45 connector (device end)
Reference	TCSMCNAM3M002P

Multi-Loader configuration tool

Description	Multi-Loader configuration tool ² Supplied with: <ul style="list-style-type: none"> ■ 1 cordset equipped with 2 RJ45 connectors ■ 1 cordset equipped with one type A USB connector and one mini B USB connector ■ 1 x 2 GB SD memory card ■ 1 x female/female RJ 45 adapter ■ 4 AA 1.5 V LRG round batteries 	Cordset for Multi-Loader tool ³ For connecting the Multi-Loader tool to the Lexium Easy 26 servo drive in its packaging. Equipped with: <ul style="list-style-type: none"> ■ A non-locking RJ45 connector with special mechanical catch on the drive end and ■ An RJ45 connector on the Multi-Loader end
Reference	VW3A8121	VW3A8126

Easy Lexium 26 servo drive - Accessories



Connection accessories

Designation	I/O connector (sold in lots of 3)	I/O terminal block module
For use with	Lexium Easy 26	Lexium Easy 26
Description	1 Sub-D 50-pin connector for CN1 I/O interface	2 Terminal block + Cordset (consisting of 2 Sub-D 50-pin connectors type VW3M1C12 and 0.5 m cable) for CN1 I/O interface connection
Reference	VW3M1C12	VW3M1C13

Description	3 I/O connection cordsets Equipped with one SUB-D 50-pin connector for connection to the CN1 interface (drive end), and open end (controller end)		
Use	This cable is dedicated to Schneider Electric PLCs, type Modicon M218/M221/M241/M200, for controlling Lexium Easy 26 servo drives with pulse-train-output (PTO) and pulse-train-input (PTI) signals		
Length (m)	1	2	3
Reference	VW3M1C10R10	VW3M1C10R20	VW3M1C10R30

Easy Lexium 26 servo drive - Braking resistors



External braking resistor

Ohmic value (W)	10		27			
Continuous power	400		100	200	400	
Peak energy 230V (Ws)	13,300		3,800	7,400	18,100	
Reference	Length of connection cable (m)	0.75	VW3A7601R07	VW3A7602R07	VW3A7603R07	VW3A7604R07
		2	VW3A7601R20	VW3A7602R20	–	VW3A7604R20
		3	VW3A7601R30	–	VW3A7603R30	VW3A7604R30

Ohmic value (W)	72		10	16		
Continuous power	200		400	956		
Peak energy 230V (Ws)	9,600		24,700	–		
Reference	Length of connection cable (m)	0.75	VW3A7606R07	VW3A7607R07	VW3A7734	VW3A7733
		2	VW3A7606R20	VW3A7607R20	–	–
		3	VW3A7606R30	VW3A7607R30	–	–

Note: The total continuous power dissipated in the external braking resistor(s) must be less than or equal to the nominal power of the Easy Lexium 26 servo drive.

8

Easy Lexium 26 servo drive - Holding brake controller



Holding brake controller

Description	24 V $\bar{\text{---}}$ power supply Max. power 0.05 kW IP 20, for mounting on 55 mm $\bar{\text{---}}$ rail
Reference	VW3M3103

Easy Lexium 26 servo drive - Additional EMC input filters



Additional EMC input filters			
Single-phase supply voltage			
For servo drives (max. nominal power) Combination	50 W to 750 W servo drives 1 x EMC filter and a single Lexium Easy 26 servo drive	1 kW and 1.5 kW servo drives 1 x EMC filter and a single Lexium Easy 26 servo drive	7.5 kW max servo drives 1 x common EMC filter and several Lexium Easy 26 servo drives
Line current (A)	9	16	24
Reference	VW3A4420	VW3A4421	VW3A4426
Three-phase supply voltage			
For servo drives (max. nominal power) Combination	50 W to 1.5 kW, 2kW and 3kW servo drives 1 x EMC filter and a single Lexium Easy 26 servo drive	4.5 kW servo drives 1 x EMC filter and a single Lexium Easy 26 servo drive	Up to 10 kW servo drives 1 x common EMC filter and several Lexium Easy 26 servo drives
Line current (A)	15	25	47
Reference	VW3A4422	VW3A4423	VW3A4424

Easy Lexium 26 servo drive - Protection using fuses



Combinations - circuit-breakers for single drive installation according to IEC 60364-5-52						
Servo drive	Nominal power (kW)	0.05	0.1	0.2	0.4	0.75
	Main number of phase	1 or 3				
	Reference	① LXM26DUA5M3X	LXM26DU01M3X	LXM26DU02M3X	LXM26DU04M3X	LXM26DU07M3X
Circuit-breaker	Rating (A)	10				
	Reference	② GV2P14				
Contactor	Reference (1) (2)	③ LC1K0610●●			LC1K09●●	
Servo drive	Nominal power (kW)	1	1	2	3	4
	Main number of phase	1 or 3			3	
	Reference	① LXM26DU10M3X	LXM26DU15M3X	LXM26DU20M3X	LXM26DU30M3X	LXM26DU45M3X
Circuit-breaker	Rating (A)	10	14	18	18	23
	Reference	② GV2P14	GV2P16	GV2P20	GV2P20	GV2P21
Contactor	Reference (1) (2)	③ LC1K12●●	LC1D18●●	LC1D32●●	LC1D32●●	LC1D65●●

(1) Composition of the contactors:

LC1 K06: 3 poles + 1 N/O auxiliary contact

LC1 D●●: 3 poles + 1 N/O auxiliary contact + 1 N/C auxiliary contact

Please refer to the "TeSys" catalog.

(2) Replace ●● with the control circuit voltage code given in the table below:

LC1K	Volts ~	220 Volts ~	230 Volts ~	240 Volts ~
	50/60 Hz	M7	P7	U7
LC1D	Volts ~	220/230 Volts ~	230 Volts ~	230/240 Volts ~
	50 Hz	M5	P5	U5
	60 Hz	M6	-	U6
	50/60 Hz	M7	P7	U7

For other available voltages between 24 V and 660 V, or a DC control circuit, please contact our Customer Care Center

Easy Lexium 26 servo drive - Protection using class J fuses



Protection using class J fuses (UL certification) - Mains supply voltage: 200...240 V a 50/60Hz

Fuse to be placed upstream (A)	5	5	5	20	20
Nominal power (kW)	0.05	0.1	0.2	0.4	0.75
Reference	LXM26DUA5M3X	LXM26DU01M3X	LXM26DU02M3X	LXM26DU04M3X	LXM26DU07M3X
Fuse to be placed upstream (A)	25	40	60	80	160
Nominal power (kW)	1	1	2	3	4.5
Reference	LXM26DU10M3X	LXM26DU15M3X	LXM26DU20M3X	LXM26DU30M3X	LXM26DU45M3X

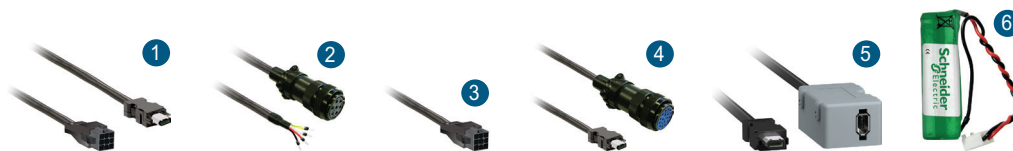
Easy Lexium 26 servo drive - BCH2 servo motors



BCH2 servo motors

Brushless servo motor		B	C	H	2	•	•	••	•	•	C	•	•	C		
Inertia	Low inertia					L										
	Medium inertia					M										
	High inertia					H										
Flange size (mm)	40						B									
	60						D									
	80						F									
	100						H									
	130						M									
	180						R									
Rated output (W)	50W									A5						
	100W									01						
	200W									02						
	300W									03						
	400W									04						
	500W									05						
	600W									06						
	750W									07						
	850W									08						
	1 kW									10						
	1.5 kW									15						
Power supply ~ 220 V	1000/1500											1				
	2000											2				
	3000											3				
Shaft end	Keyed shaft (shaft & housing IP 65)												3			
Encoder	High resolution single-turn absolute encoder, 20-bit resolution													C		
	High resolution multi-turn absolute encoder, 20 bit resolution, 4096 turns													M		
Holding brake	Without brake														A	
	With brake (option)														F	
Connections	Free leads with connectors (BCH2•B/•D/•F motors only)														5	
	MIL connectors (BCH2•H/pM/•R motors only)														6	
Mechanical motor design	Motor compatible with Asian style mounting standards														C	

Easy Lexium 26 servo drive - Connection components



Shielded power cordsets for BCH2 motors without brake

Connector		1	2			
		Equipped with one quick connector (servo motor end), and open end (servo drive end)	Equipped with one MIL connector (servo motor end), and open end (servo drive end)			
AWG/mm ²		AWG18 / 4 x 1	AWG16 / 4 x 1.5	AWG12 / 4 x 4	AWG10 / 4 x 6	
Reference	Length (m)	1.5	VW3M5D1AR15	-	-	
		3	VW3M5D1AR30	VW3M5D2AR30	VW3M5D4AR30	VW3M5D6AR30
		5	VW3M5D1AR50	VW3M5D2AR50	VW3M5D4AR50	VW3M5D6AR50

Shielded power cordsets for BCH2 motors with brake

Connector		1	2			
		Equipped with one quick connector (servo motor end), and open end (servo drive end)	Equipped with one MIL connector (servo motor end), and a free lead (servo drive end)			
AWG/mm ²		AWG18 / (4 x 1) + (2 x 1)	AWG16 / (4 x 1.5) + (2 x 1)	AWG12 / (4 x 4) + (2 x 1.5)	(4 x 6) + (2 x 1.5) / AWG10	
Reference	Length (m)	3	VW3M5D1FR30	VW3M5D2FR30	VW3M5D4FR30	VW3M5D6FR30
		5	VW3M5D1FR50	VW3M5D2FR50	VW3M5D4FR50	VW3M5D6FR50

Motor power connector kits

Description		3	4		
		Motor power connector kits (sold in lots of 3)	Power MIL connector kits		
For use with		BCH2●B/●D/●F motors (flange size: 40/60/80 mm) with flying lead connection, without brake	BCH2●B/●D/●F motors (flange size: 40/60/80 mm) with flying lead connection, with brake	BCH2●H/●M motors (flange size: 100/130 mm) with or without brake	BCH2●R motors (flange size: 180 mm, from 2.0 kW to 5.5 kW) with or without brake
Reference		VW3M5D1A	VW3M5D1F	VW3M5D2A	VW3M5D2B

Shielded encoder cordsets

Description		1	4		
		Equipped with one plastic connector (servo motor end), and a firewire connector (servo drive end)	Equipped with one MIL connector (servo motor end), and a firewire connector (servo drive end)		
For use with		BCH2●B/●D/●F motors, for connection to CN2 interface			BCH2●H/●M/●R motors, for connection to CN2 interface
Composition		10 x 0.13 mm ² / 10 x 26 AWG			10 x 0.13 mm ² / 10 x 26 AWG
Reference	Length (m)	1.5	VW3M8D1AR15	-	
		3	VW3M8D1AR30	VW3M8D2AR30	
		5	VW3M8D1AR50	VW3M8D2AR50	

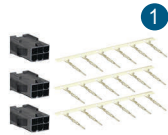
Encoder connector kits

Description		3	4		
		Encoder connector kits including one plastic connector (servo motor end), and a firewire connector (servo drive end) (sold in lots of 2)	Encoder connector kits including one MIL connector (servo motor end), and a firewire connector (servo drive end) (sold in lots of 2)		
For use with		BCH2●B/●D/●F motors (flange: 40/60/80 mm) with flying lead connection			BCH2●H/●M/●R motors (flange: 100/130/180 mm) with MIL connector
Reference		VW3M8D1A			VW3M8D2A

Accessories for use with BCH2 motors with multi-turn absolute encoder

Description		5	6		
		Battery compartment	Battery 3.6 V		
For use with		BCH2 motors with multi-turn absolute encoder			BCH2 motors with multi-turn absolute encoder and battery compartment "VW3M8BATC"
Reference		VW3M8BATC			VW3M9BATT

Easy Lexium 26 servo drive - Connection components



1



2



3



4

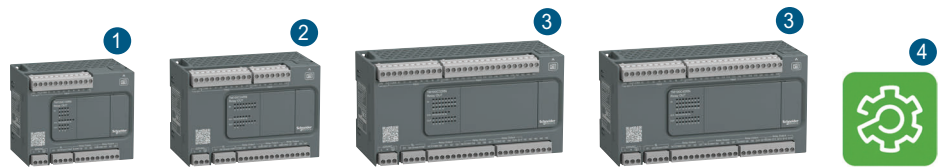
Selection of motor connector kit or encoder connector kit, according to BCH2 motor type

Motor	1 Motor power cable connector kit		2 Encoder connector kit	3 Motor power cable		4 Encoder cable				
	Without brake	With brake		Without brake	With brake					
BCH2MBA53●●5C	VW3M5D1A	VW3M5D1F	VW3M8D1A	VW3M5D1AR●●	VW3M5D1FR●●	VW3M8D1AR●●				
BCH2MB0133●●5C										
BCH2LD0233●●5C										
BCH2LD0433●●5C										
BCH2LF0433●●5C										
BCH2HF0733●●5C										
BCH2LF0733●●5C										
BCH2LH1033●●6C	VW3M5D2A	VW3M5D2A	VW3M8D2A	VW3M5D2AR●●	VW3M5D2FR●●	VW3M8D2AR●●				
BCH2LH2033●●6C										
BCH2MM0813●●6C										
BCH2MM0313●●6C										
BCH2MM0523●●6C										
BCH2MM0613●●6C										
BCH2HM1023●●6C										
BCH2MM0913●●6C										
BCH2MM1523●●6C										
BCH2MM2023●●6C										
BCH2HR2023●●6C	VW3M5D2B	VW3M5D2B								
BCH2MR3013●●6C							VW3M8D2A	VW3M5D4AR●●	VW3M5D4FR●●	VW3M8D2AR●●
BCH2MR3023●●6C										
BCH2MR3523●●6C										
BCH2MR4513●●6C										
			VW3M5D6AR●●	VW3M5D6FR●●						



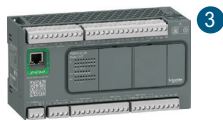
09. Easy Modicon Logic Controllers

Easy Modicon M100 and M200 logic controllers



Easy Modicon M100 logic controllers (1)

Number of digital I/O	16 ¹	24 ²	32 ³	40 ³
Digital inputs	<ul style="list-style-type: none"> ■ 9 sink/source ■ 24 VDC input voltage ■ 4 fast inputs for FC ■ 3 regular inputs ■ 2 high speed inputs for HSC 	<ul style="list-style-type: none"> ■ 14 sink/source ■ 24 VDC input voltage ■ 4 fast inputs for FC ■ 8 regular inputs ■ 2 high speed inputs for HSC 	<ul style="list-style-type: none"> ■ 20 sink/source ■ 24 VDC input voltage ■ 4 fast inputs for FC ■ 14 regular inputs ■ 2 high speed inputs for HSC 	<ul style="list-style-type: none"> ■ 24 sink/source ■ 24 VDC input voltage ■ 4 fast inputs for FC ■ 18 regular inputs ■ 2 high speed inputs for HSC
Digital outputs (relay outputs)	7	10	12	16
Serial link (2)	1			
Supply voltage	110...220 VAC			
Programming software (3)	EcoStruxure Machine Expert - Basic ⁴			
Reference	TM100C16RN	TM100C24RN	TM100C32RN	TM100C40RN



Easy Modicon M200 logic controllers (4)

Supply voltage	24 VDC			
Number of digital I/O	40			
Digital inputs	<ul style="list-style-type: none"> ■ 24 sink/source ■ 24 VDC input voltage 	<ul style="list-style-type: none"> ■ 4 fast inputs for FC ■ 16 regular inputs 	<ul style="list-style-type: none"> ■ 4 high speed inputs for HSC 	
Digital outputs	<ul style="list-style-type: none"> ■ 16 sink outputs ■ 14 regular transistor outputs ■ 2 fast outputs (PWM/PLS/PTO) 		<ul style="list-style-type: none"> ■ 16 source outputs ■ 14 regular transistor outputs ■ 2 fast outputs (PWM/PLS/PTO) 	
Dimension (W x H x D)	175 x 70 x 90 ³			
Ethernet (RJ 45)	–	1	–	1
Serial link (5)	1			
Reference	TM200C40U	TM200CE40U	TM200C40T	TM200CE40T

(1) M100 controllers are supplied with:

- removable screw terminal blocks for connecting the I/O
- a removable screw terminal block for connecting the power supply
- a removable screw terminal block for the serial link

(2) Each M100 logic controller has an embedded USB mini-B programming port.

(3) PC should be equipped with Windows 7 or 10 (32-bit or 64-bit). To download this programming software, please visit our site www.se.com.

(4) M200 controllers are supplied with:

- removable screw terminal blocks for connecting the I/O
- a removable screw terminal block for connecting the power supply
- a removable screw terminal block for the serial link

(5) Each M200 logic controller has an embedded USB mini-B programming port.

Easy Modicon M200 logic controllers



Easy Modicon M200 logic controllers (1)

Supply voltage	110...220 VAC		
Number of digital I/O	16	24	32
Digital inputs	<ul style="list-style-type: none"> ■ 9 sink/source ■ 24 VDC input voltage ■ 4 fast inputs for FC ■ 1 regular input ■ 4 high speed inputs for HSC 	<ul style="list-style-type: none"> ■ 14 sink/source ■ 24 VDC input voltage ■ 4 fast inputs for FC ■ 6 regular inputs ■ 4 high speed inputs for HSC 	<ul style="list-style-type: none"> ■ 20 sink/source ■ 24 VDC input voltage ■ 4 fast inputs for FC ■ 12 regular inputs ■ 4 high speed inputs for HSC
Digital outputs (relay outputs)	7	10	12
Dimension (W x H x D)	110 x 70 x 90 ¹	130 x 70 x 90 ²	175 x 70 x 90 ³
Ethernet (RJ 45)	–	–	1
Serial link (2)	1	–	–
Reference	TM200C16R	TM200C24R	TM200CE24R TM200C32R

Supply voltage	110...220 VAC		
Number of digital I/O	32	40	60
Digital inputs	<ul style="list-style-type: none"> ■ 20 sink/source ■ 24 VDC input voltage ■ 4 fast inputs for FC ■ 12 regular inputs ■ 4 high speed inputs for HSC 	<ul style="list-style-type: none"> ■ 24 sink/source ■ 24 VDC input voltage ■ 4 fast inputs for FC ■ 16 regular inputs ■ 4 high speed inputs for HSC 	<ul style="list-style-type: none"> ■ 36 sink/source ■ 24 VDC input voltage ■ 4 fast inputs for FC ■ 28 regular inputs ■ 4 high speed inputs for HSC
Digital outputs (relay outputs)	12	16	24
Dimension (W x H x D)	175 x 70 x 90 ³	–	225 x 70 x 90 ⁴
Ethernet (RJ 45)	1	–	1
Serial link (2)	1	–	–
Reference	TM200CE32R	TM200C40R	TM200CE40R TM200C60R TM200CE60R

Supply voltage	24 VDC		
Number of digital I/O	16		
Digital inputs	<ul style="list-style-type: none"> ■ 9 sink/source ■ 24 VDC input voltage 	<ul style="list-style-type: none"> ■ 4 fast inputs for FC ■ 1 regular input 	<ul style="list-style-type: none"> ■ 4 high speed inputs for HSC
Digital outputs	<ul style="list-style-type: none"> ■ 7 sink outputs ■ 5 regular transistor outputs ■ 2 fast outputs (PWM/PLS/PTO) 	–	<ul style="list-style-type: none"> ■ 7 source outputs ■ 5 regular transistor outputs ■ 2 fast outputs (PWM/PLS/PTO)
Dimension (W x H x D)	110 x 70 x 90 ¹		
Ethernet (RJ 45)	–		
Serial link (2)	1		
Reference	TM200C16U		TM200C16T

Supply voltage	24 VDC		
Number of digital I/O	24		
Digital inputs	<ul style="list-style-type: none"> ■ 14 sink/source ■ 24 VDC input voltage 	<ul style="list-style-type: none"> ■ 4 fast inputs for FC ■ 6 regular inputs 	<ul style="list-style-type: none"> ■ 4 high speed inputs for HSC
Digital outputs	<ul style="list-style-type: none"> ■ 10 sink outputs ■ 8 regular transistor outputs ■ 2 fast outputs (PWM/PLS/PTO) 	–	<ul style="list-style-type: none"> ■ 10 source outputs ■ 8 regular transistor outputs ■ 2 fast outputs (PWM/PLS/PTO)
Dimension (W x H x D)	130 x 70 x 90 ²		
Ethernet (RJ 45)	–	1	–
Serial link (2)	1	–	1
Reference	TM200C24U	TM200CE24U	TM200C24T TM200CE24T

Supply voltage	24 VDC		
Number of digital I/O	32		
Digital inputs	<ul style="list-style-type: none"> ■ 20 sink/source ■ 24 VDC input voltage 	<ul style="list-style-type: none"> ■ 4 fast inputs for FC ■ 12 regular inputs 	<ul style="list-style-type: none"> ■ 4 high speed inputs for HSC
Digital outputs	<ul style="list-style-type: none"> ■ 12 sink outputs ■ 10 regular transistor outputs ■ 2 fast outputs (PWM/PLS/PTO) 	–	<ul style="list-style-type: none"> ■ 12 source outputs ■ 10 regular transistor outputs ■ 2 fast outputs (PWM/PLS/PTO)
Dimension (W x H x D)	175 x 70 x 90 ³		
Ethernet (RJ 45)	–		
Serial link (2)	1		
Reference	TM200C32U		TM200C32T

Easy Modicon M200 logic controllers - Accessories



Cartridges for Easy Modicon M200 logic controllers (1)

Description	Digital I/O cartridges	Communication cartridges	
Details	<ul style="list-style-type: none"> 2 digital inputs 2 transistor sink outputs Connection via screw terminal block 	1 additional RS232C or RS485 serial link on screw terminal block	Controllers 16IO/24IO can support 1 additional isolated RS485 serial link on screw terminal block. Controllers 32IO/40IO/60IO can support 2 additional isolated RS485 serial link on screw terminal block
Reference	TMCR2DM4U	TMCR2SL1	TMCR2SL1S

Description	Analog I/O cartridges		
Details	<ul style="list-style-type: none"> 2 analog inputs (12-bit resolution) configurable as: <ul style="list-style-type: none"> 0...10 V voltage 0...20 mA/4...20 mA current Connection via screw terminal block 	<ul style="list-style-type: none"> 2 analog inputs (12-bit resolution) 0...10V/ 0...5V/ 0...20mA / 4...20mA 1 analog output (12-bit resolution) 0...10V/ 0...5V/ 0...20mA / 4...20mA Connection via screw terminal block 	<ul style="list-style-type: none"> 2 temperature inputs (12 or 14-bit resolution depending on input signal) type K, J, R, S, B, E, T, N, C, PT100, PT1000, NI100, NI1000 Connection via screw terminal block
Reference	TMCR2AI2	TMCR2AM3	TMCR2TI2

Description	Analog I/O cartridges	
Details	<ul style="list-style-type: none"> 2 analog outputs (12-bit resolution) 0...10 V voltage Connection via screw terminal block 	<ul style="list-style-type: none"> 2 analog outputs (12-bit resolution) 4...20 mA current Connection via screw terminal block
Reference	TMCR2AQ2V	TMCR2AQ2C



Separate parts for Easy Modicon M200 logic controllers

Description	Cartridges cover ¹	RTC battery ²
Reference	TMARCOVER	TMARBAT1

Replacements parts for Easy Modicon M200 logic controllers ³

Description	Set of terminal blocks for connecting the I/O on M200 controllers	
Details	3-way terminal block for power supply connection	4-way terminal block for serial link connection
Reference	TMARTB3	TMARTB4

Expansion modules

Description	Modicon TM3 expansion modules	Modicon TM2 expansion modules
Details	Easy Modicon M200 logic controllers	
Reference	(2)	

(1) One cartridge for controllers with 16 and 24 I/O. Two cartridges maximum for controllers with 32, 40 and 60 I/O, only one of which can be a communication cartridge.

(2) See our list of compatible expansion modules on next page.

Easy Modicon M200 logic controllers - Product compatibility

Product compatibility						
Expansion options			Number and type of I/O	M200 logic controllers		
				TM200C16R	TM200C16U	TM200C16T
Modicon TM3	Digital modules	TM3DI8	8 x 24 V $\overline{\text{---}}$ sink/source inputs			
		TM3DI16	16 x 24 V $\overline{\text{---}}$ sink/source inputs			
		TM3DI32K	32 x 24 V $\overline{\text{---}}$ sink/source inputs			
		TM3DQ8R	8 x 24 V $\overline{\text{---}}$ /240 V a relay outputs			
		TM3DQ8T	8 x 24 V $\overline{\text{---}}$ source transistor outputs			
		TM3DQ8U	8 x 24 V $\overline{\text{---}}$ sink transistor outputs			
		TM3DQ16R	16 x 24 V $\overline{\text{---}}$ /240 V \sim relay outputs			
		TM3DQ16T	16 x 24 V $\overline{\text{---}}$ source transistor outputs			
		TM3DQ16U	16 x 24 V $\overline{\text{---}}$ sink transistor outputs			
		TM3DQ32TK	32 x 24 V $\overline{\text{---}}$ source transistor outputs			
		TM3DQ32UK	32 x 24 V $\overline{\text{---}}$ sink transistor outputs			
		TM3DM8R	4 x 24 V $\overline{\text{---}}$ sink/source inputs + 4 x 24 V $\overline{\text{---}}$ /240 V \sim relay outputs			
		TM3DM24R	16 x 24 V $\overline{\text{---}}$ sink/source inputs + 8 x 24 V $\overline{\text{---}}$ /240 V \sim relay outputs			
		TM3RDM16R	8 x 24 V $\overline{\text{---}}$ sink/source inputs + 8 x 24 V $\overline{\text{---}}$ /240 V \sim relay outputs			
		TM3RDM32R	16 x 24 V $\overline{\text{---}}$ sink/source inputs + 16 x 24 V $\overline{\text{---}}$ /240 V \sim relay outputs			
		Analog modules	TM3AI2H	2 voltage/current inputs		
	TM3AI4		4 voltage/current inputs			
	TM3TI4		4 voltage/current or temperature inputs			
	TM3AI8		8 voltage/current inputs			
	TM3TI8T		8 temperature inputs			
	TM3AQ2		2 voltage/current outputs			
	TM3AQ4		4 voltage/current outputs			
	TM3TM3		2 voltage/current or temperature inputs + 1 voltage/current outputs			
	TM3AM6		4 voltage/current inputs + 2 voltage/current outputs			

Possible to combine, up to 4 modules

Easy Modicon M200 logic controllers - Configuration

Configuration ⁽¹⁾⁽²⁾								
Configuration limits	Logic controllers							
Maximum number of transistor outputs	130	137	137	130	140	140	132	144
Maximum number of relay outputs	71	64	64	74	64	64	76	64
References	TM200C16R	TM200C16T	TM200C16U	TM200C24R TM200CE24R	TM200C24T TM200CE24T	TM200C24U TM200CE24U	TM200C32R TM200CE32R	TM200C32T
Configuration limits	Logic controllers							
Maximum number of transistor outputs	144	132	148	148	132			
Maximum number of relay outputs	64	80	64	64	88			
References	TM200C32U	TM200C40R TM200CE40R	TM200C40T TM200CE40T	TM200C40U TM200CE40U	TM200C60R TM200CE60R			

(1) Modicon TM3 or TM2 digital I/O modules connect to Modicon M200 logic controllers with a maximum of 4 local I/O modules.

(2) The maximum number of Modicon TM3/TM2 expansion modules can be reduced by the number of transistor outputs or relay outputs used (see the table). For more information on TM3/TM2 expansion modules, please visit our website www.se.com.

Notes

A series of horizontal dotted lines for writing notes.

Life Is On



Learn more about automation and control solutions at www.se.com

The information provided in this documentation contains general descriptions and/or technical characteristics of the performance of the products contained herein. This documentation is not intended as a substitute for and is not to be used for determining suitability or reliability of these products for specific user applications. It is the duty of any such user or integrator to perform the appropriate and complete risk analysis, evaluation and testing of the products with respect to the relevant specific application or use thereof. Neither Schneider Electric nor any of its affiliates or subsidiaries shall be responsible or liable for misuse of the information contained herein.

Schneider Electric Industries SAS
35, rue Joseph Monier - CS 30323
F92506 Rueil-Malmaison Cedex