

## FEATURES

- Excellent electrical connection
- Reduces short circuits
- DIN Colour coded collar for easy ferrule size identification
- Nylon insulated collar for reduced leakage, creepage and gas intrusion
- Tin plated copper tube for excellent conductivity
- Crimped terminal can be repeatedly inserted and removed without degrading end of the wire

## RS PRO Insulated Crimp Bootlace Ferrule, 12mm Pin Length, 5.8mm Pin Diameter, 16mm<sup>2</sup> Wire Size, Blue

RS Stock No.: 513-2663



RS Professionally Approved Products bring to you professional quality parts across all product categories. Our product range has been tested by engineers and provides a comparable quality to the leading brands without paying a premium price.

## Product Description

From RS PRO a range of high-quality French colour coded bootlace ferrules (also known as cord end terminals) for providing a clean end termination to multi-stranded wires. These reliable wire ferrules ensure that you have a positive connection when connecting wires to terminal blocks and captive terminals

### Suitable Crimping Tools

For ferrules with a wire size range of 0.25 to 6 mm<sup>2</sup> use crimping tool frame stock number [848-391](#) with crimping die [848-420](#)

For ferrules with a wire size range of 10 to 25 mm<sup>2</sup> use crimping tool stock number [297-2935](#)

## General Specifications

<b>Number of Entries</b>	1
<b>Insulation</b>	Insulated
<b>Insulation Material</b>	Nylon
<b>Colour</b>	Blue
<b>Contact Material</b>	Copper
<b>Contact Plating</b>	Tin
<b>Terminal Material</b>	Copper tube
<b>Surface Treatment</b>	Tin plate
<b>Insulation colour</b>	Blue
<b>Ferrule Type</b>	French
<b>Pack Quantity</b>	10
<b>Application</b>	Bootlace ferrules are used on multi-stranded wires that are being inserted into screw terminals and terminal blocks. Applications include consumer units, circuit breakers, electrical control panels and any equipment where there is a requirement for a multi-stranded wire connection

## Electrical Specifications

<b>Current Rating</b>	9A
<b>Voltage Rating</b>	300V

## Mechanical Specifications

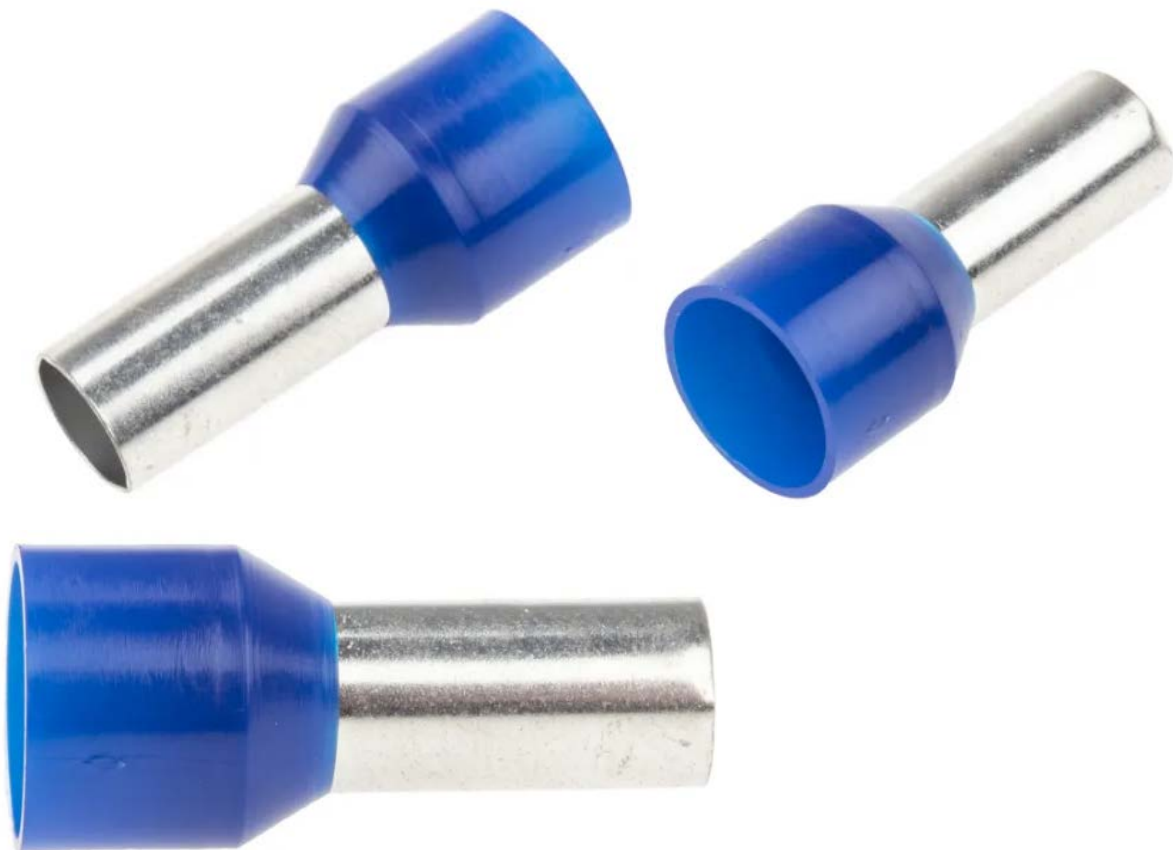
Maximum Wire Size (mm <sup>2</sup> )	16
Maximum Wire Size (AWG)	6
Pin Diameter	5.8mm
Pin Length	12mm
Overall Length	24mm
Weight	0.0520kg

## Operation Environment Specifications

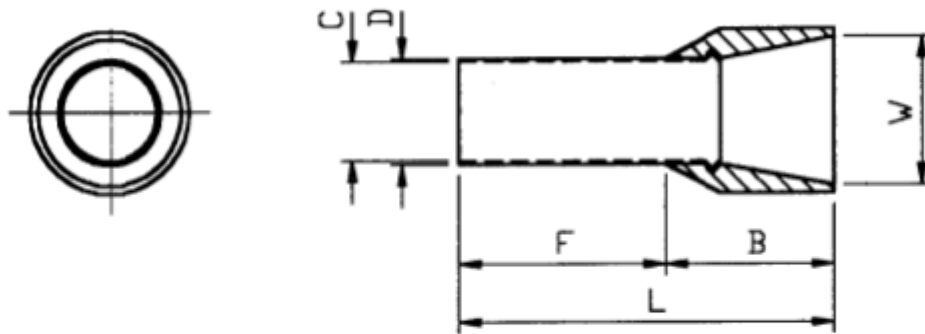
Maximum Temperature	105°C
---------------------	-------

## Approvals

Compliance/Certifications	CE / UR / cUR
---------------------------	---------------

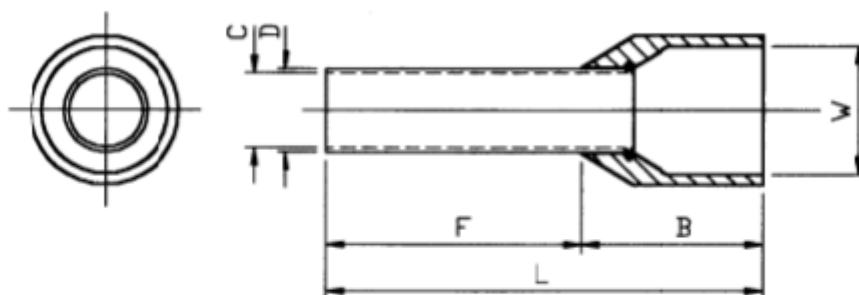


**Drawing (mm):**



Stock Number	F $\pm 0.50$	L $\pm 1.00$	W $\pm 0.30$	B $\pm 0.50$	D $\pm 0.10$	C $\pm 0.10$	Colour
513-2663	12	22	8.7	10	6.2	5.8	BLUE

**Dimensions (mm)**



Stock Number	F $\pm 0.50$	L $\pm 1.00$	W $\pm 0.30$	B $\pm 0.50$	D $\pm 0.10$	C $\pm 0.10$	Colour
513-2641	12	20.5	6	8.5	3.9	3.5	YELLOW