

FEATURES

- M12, 4 -pole , Male to Female

RS PRO M12 MALE REAR M16X1.5MM THREADS TO M12 FEMALE 4 PIN CONVERTER

RS Stock No.: 2305691



RS Professionally Approved Products bring to you professional quality parts across all product categories. Our product range has

RS PRO M12 MALE TO FEMALE CONVERTER

been tested by engineers and provides a comparable quality to the leading brands without paying a premium price.

Product Description

ATTRIBUTE 1

Sensor/actuator control cabinet feed-through, male to female, 4-Pole, M12, shielded, A-coded, bipolar/screw mounting with M16 thread.

- IP67 Protection
- 4A Rated current at 40°C
- $\geq 100\text{M}\Omega$ Insulation resistance
- -25 to 85°C Operating temperature range

Application:-Communications & Networking, Sensing & Instrumentation, Industrial

General Specifications

Rated Operational Voltage	250 V
Current Rating	4A
Insulation Resistance	$\geq 100\text{ M}\Omega$
Temperature Range	-25°C ... +75°C
Coding	A-Coded
Mounting	Bipolar/Screw Mounting M16 x 1.5
Matting Cycles	>100
Coupling	Thread Locking
Shield	Yes

Material Specifications

Contact	Cu-Zn
Contact Plating	Gold Flash
Contact Carrier	Nylon 66
O-Ring	NBR
Housing	Nickel Plated Brass
No. of Pole	4
Coupling Nut	Nickel Plated Brass

Protection Category

Degree of Protection	IP67
----------------------	------

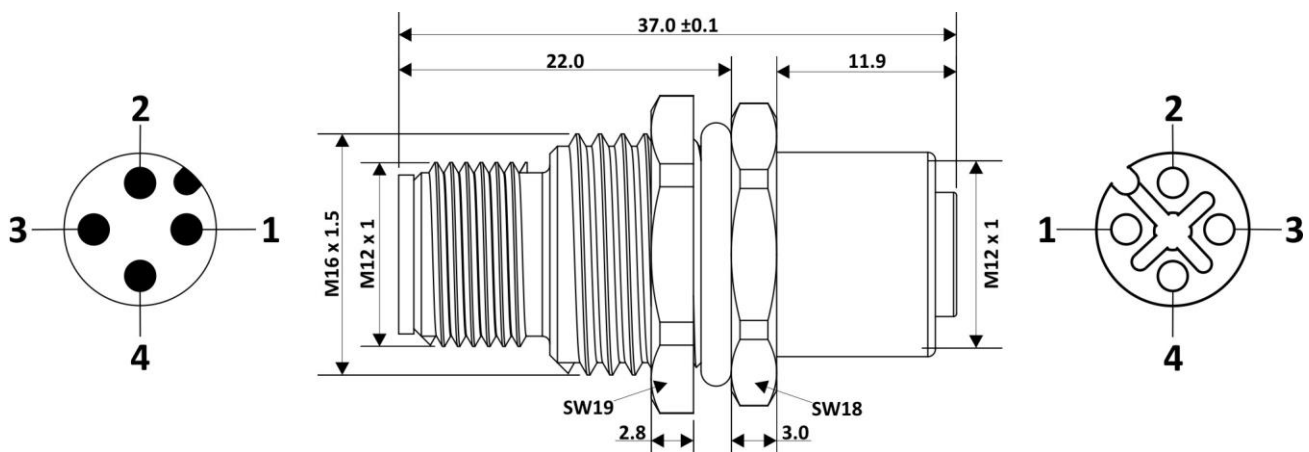
Additional Information

Custom Tariff Number	85369090
----------------------	----------

Approvals

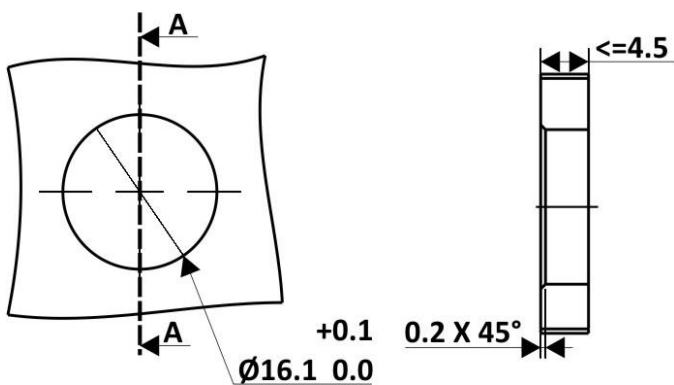
Standards Met	IEC 61076-2-101
---------------	-----------------

Connection Diagrams / Assembly Diagrams / Illustrations / Accessories

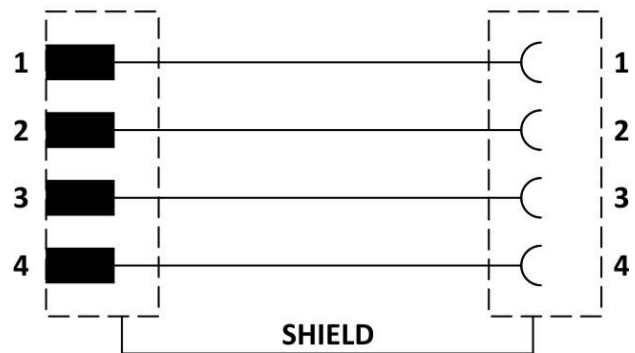


All Dimensions are in mm.

Panel Cutout



Wiring Diagram



Contact assignment of the M12 plug and the M12 socket.