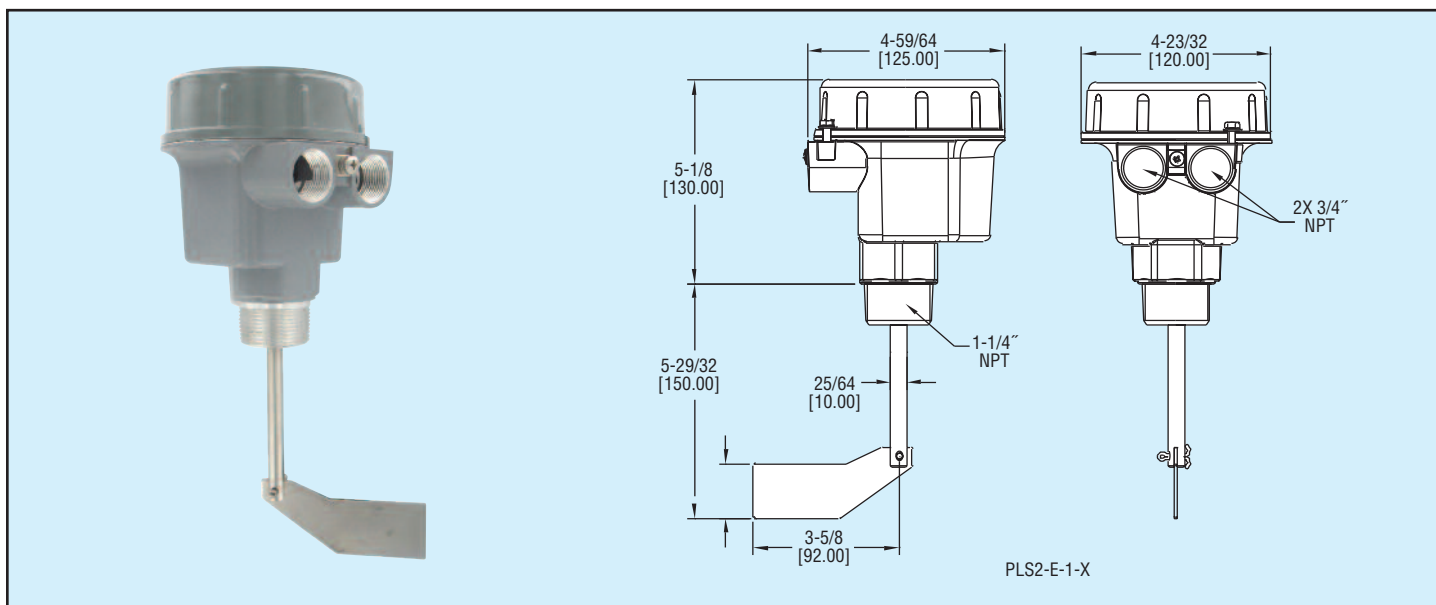


Paddle Level Switch

3 Sensitivity Settings, Top or Side Mounting



The **Series PLS2** is an electromechanical level switch designed for level monitoring of bulk materials. The rotating measuring vane is driven by a brushless synchronous motor at one revolution per minute. As product builds up, the paddle rotation is impeded and the resulting motor torque activates the output switch and stops the motor. A spring mechanism reactivates the motor and returns the switch to normal state when the material no longer impedes the paddle rotation. A torque adjusting mechanism eliminates the need for different sized paddles. The PLS2 is designed with the industry standard 1-1/4" male NPT connection and unit can be side or top mounted.

FEATURES

- 3 sensitivity settings
- Top or side mountable
- Brushless synchronous motor: Assures long term reliability and efficiency
- Motor shuts off when paddle stalls
- Screw cover: For easy access with no worries about losing bolts or screws

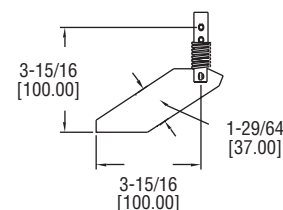
APPLICATION

- Level monitoring of bulk materials

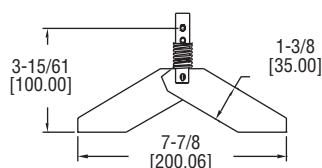
Model	Description
PLS2-E-1-1	Explosion-proof paddle level switch, 115 VAC power supply
PLS2-E-1-2	Explosion-proof paddle level switch, 230 VAC power supply
PLS2-E-1-3	Explosion-proof paddle level switch, 24 VDC power supply

ACCESSORIES

- PLS2-PL1, Double Sided Spring Paddle
- PLS2-PL2, Single Sided Spring Paddle
- PLS2-EX1, 8.5" Shaft Extension
- PLS2-EX2, 19.6" Shaft Extension
- PLS2-EX3, 39.4" Shaft Extension
- PLS2-EX4, 78.7" Shaft Extension



PLS2-PL1



PLS2-PL2

SPECIFICATIONS

Service: Dry powder or bulk materials compatible with wetted materials.

Wetted Materials:

- Paddle: 304 SS;
- Exposed shaft: 303 SS;
- Shaft seal: NBR;
- Process connection: Aluminum.

Temperature Limits:

- Process: -13 to 176°F (-25 to 80°C);
- Ambient: -4 to 140°F (-20 to 60°C).

Pressure Limit: 11.6 psi (0.8 bar).

Power Requirement: Select by model number: 115 VAC, 230 VAC or 24 VDC.

Power Consumption: AC versions: 4 VA; DC version: 2.5 watt.

Enclosure: Aluminum, powder coated.

Enclosure Rating:

- NEMA 4 (IP66);
- Rated for Class II & III, Div. 1, Group E, F, G.

Switch Type: SPDT micro switch.

Electrical Rating: 5 A @ 250 VAC, 3 A @ 30 VDC.

Electric Connections: Screw terminals.

Conduit Connection: 3/4" female NPT.

Process Connection: 1-1/4" male NPT.

Mounting Orientation: Side or top mounting.

Sensitivity: Minimum material density of 6 lb/ft³ (96 kg/m³).

Permitted Mechanical Loading:

- Standard shaft: 67 lbf (300 N) max;
- Optional extension: 22 lbf (100 N) max.

Weight: 2.6 lb (1.2 kg).

Agency Approvals: CE, FM.