



Datasheet

ENGLISH

6mm Bore Spherical Bearing, 500N Axial Load Rating, 1860N Radial Load Rating

RS Stock number 0382419



Features

Materials:

Housing: Sizes 2 - 12 - C22 or C35 Pb steel, zinc plated and passivated

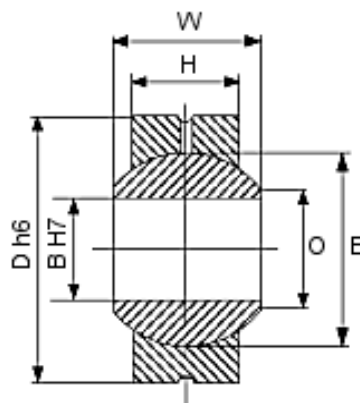
Sizes 14 - 30 - C35 steel, zinc plated and passivated

Ball: Standard - hardened ground, polished 100 Cr6 ball bearing steel

Series 10 - hardened ground, hard chrome plated 100 Cr6 ball bearing steel

Inserts: Sizes 2 - 16 - Cu Zn 40 Mn Pb bronze

Sizes 18 - 30 - Gc - Cu Su7 Zn Pb bronze



Order Code	Size	Static Loads		B	D	H	O	W	Ball Dia E	Weight
		Radial	Axial							
382-380	3	10.3	2.5	3	12	3.6	3.6	4.8	6	3
382-419	6	22.5	5	6	18	6.75	8.96	9	12.7	12