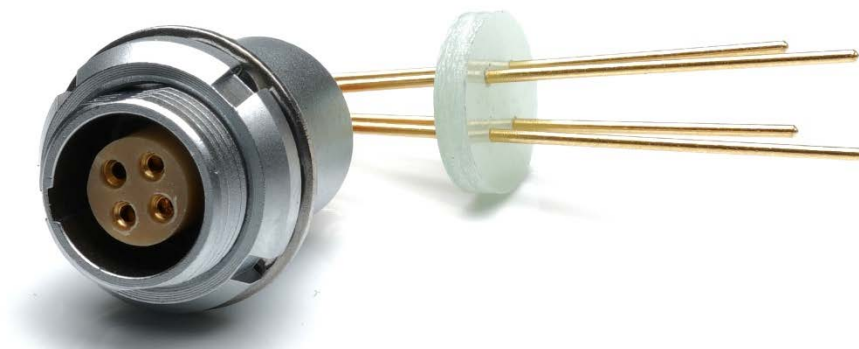


## Datasheet

# RS PRO Fixed receptacle Female 4 pin print 90° PCB Brass

Stock No: 209-5608



RS Pro's range of Chrome plated Brass push-pull locking connectors offer exceptional quality that is found in many cutting-edge connectors, including full 360° EMC shielding and high mating life. As has become standard within the RS Pro brand you can expect high quality products but at a reasonable price. These connectors are ideal for use in medical devices, testing equipment, audio equipment and other high-end indoor applications.

## Features & Benefits:

- Push-pull latching system
- Chrome plated Brass
- IP50
- 360° Screening for full EMC shielding
- 7A Current Rating

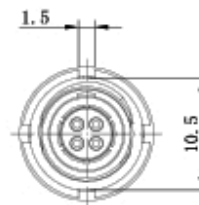
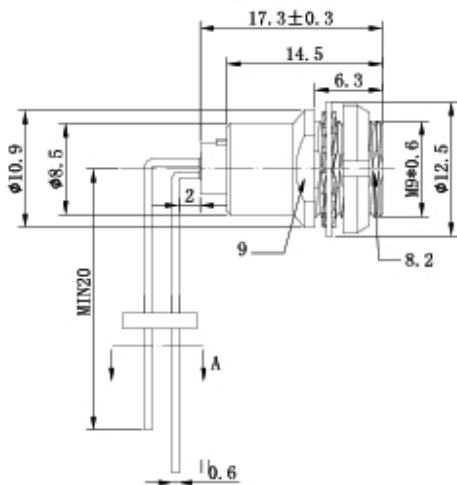
## Technical

| Characteristics           | Value             | Standard             |
|---------------------------|-------------------|----------------------|
| Endurance                 | >5000cycles       | IEC60512-5test9a     |
| Humidity                  | Up to 95% at 60°C |                      |
| Temperature range         | -55°C, +250°C     |                      |
| Resistance to vibration   | 10-2000Hz,15g     | IEC 60512-4 test 6d  |
| Shock resistance          | 100g, 6ms         | IEC 60512-4 test 6c  |
| Salt spray corrosion test | >96hrs            | IEC 60512-6 test 11f |
| Protection index (mated)  | IP50              | IEC 60529            |
| Climatical category       | 55/175/21         | IEC 60068-1          |

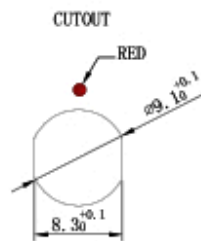
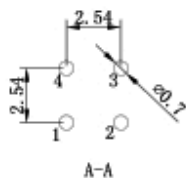
## Electrical

| Characteristics      |          | Value  | Standard      |
|----------------------|----------|--------|---------------|
| Shielding efficiency | at 10MHZ | >75 dB | IEC 60619-1-3 |
|                      | at 1GHZ  | >40 dB | IEC 60619-1-3 |

# Dimensional line drawings



PCB CUT OUT



## Quality Standards

