

Datasheet

Time Lag Ceramic Tube Fuse, 0.5-10A, 5x20mm

Stock No: 1778059, 1778060, 1778061, 1778062

RS Pro



Specifications:

Materials

Tube (Body): Non-Transparent ceramic tube fuse. No breaking or deformation is allowed.

Two brass end caps: Made of brass of good conductivity.

Coating of brass caps: Plating the surface with nickel. If the indication is added with "S", it needs to be plated with silver.

Interrupting Ratings

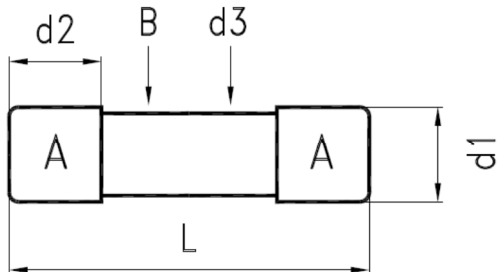
500mA~25A : 100 amperes at 500V AC

500mA~3.15A : 1500 amperes at 500V DC

4A~12A : 500 amperes at 500V DC

Operating Temperature

-55°C to +125°C

Drawing (mm):


NO.	Part Name		Volume
A	Brass Cap	Nickel Plating	2
B	Ceramic Tube	Non-Transparent Ceramic Tube	1
d1	Dia. of Cap	$5.2^{+0.1}_{-0.2}$	
d2	Height of Cap	5.25 ± 0.1 mm	
d3	Dia. of Ceramic	4.50 ± 0.2 mm	
L	Body of Fuse	20.00 ± 0.5 mm	

Electrical Characteristic:

Rating	150% Rating		210% Rating		275% Rating		400% Rating		1000% Rating	
	Min.	Max.	Min.	Max.	Min.	Max.	Min.	Max.	Min.	Max.
500mA~800mA	60 min			30 min	250 ms	80 sec	50 ms	5 sec	5 ms	150 ms
1A~3.15A	60 min			30 min	750 ms	80 sec	95 ms	5 sec	10 ms	150 ms
4A~6.3A	60 min			30 min	750 ms	80 sec	150 ms	5 sec	10 ms	150 ms
8A~25A	30 min			30 min	750 ms	80 sec	150 ms	5 sec	10 ms	150 ms



ENGLISH

Mark Approvals	Nominal Resistance Cold Ohms Range	Nominal Melting I^2t A ² Sec	Voltage Drop
			(mv)MAX
500 mA	0.1257-0.2334	0.9128	850
1 A	0.0497-0.0923	4.2017	350
6.3 A	0.0079-0.0147	117.15	100
10 A	0.0035-0.0065	382.68	100

Reference:

Stock No	Rating amperes
1778059	500mA 500V
1778060	1A 500V
1778061	6.3A 500V
1778062	10A 500V