



ENGLISH

Datasheet

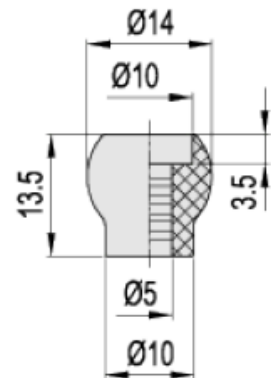
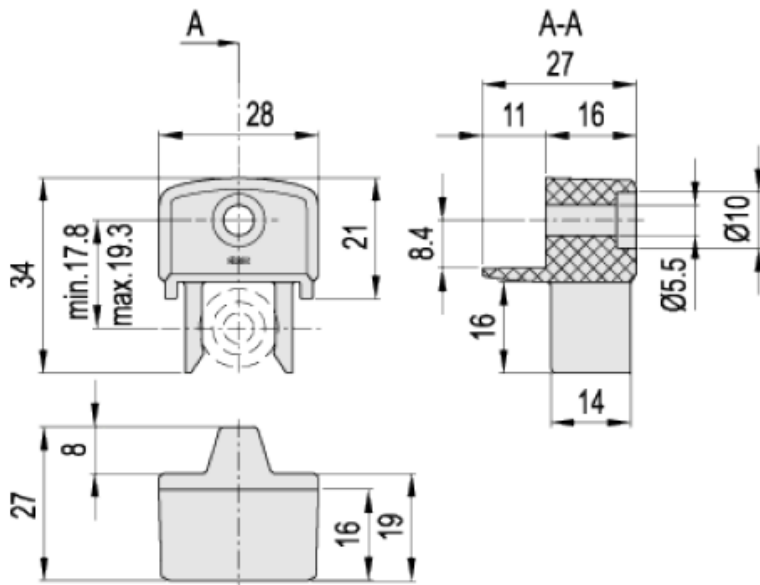
RS Fibreglass Reinforced PA Ball Latch Kit, BPSS Minimum of 15mm

RS Stock number 786-5974

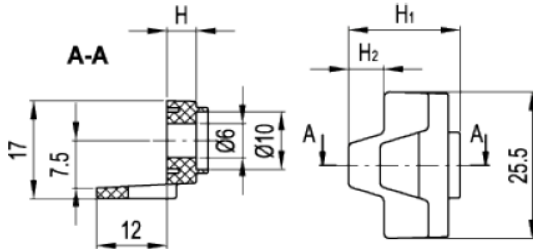


Clamp

Ball



Elesa Standards		Opening release strength	Weight
Code	Description	[N]	g
6251	BPS.30	30	10

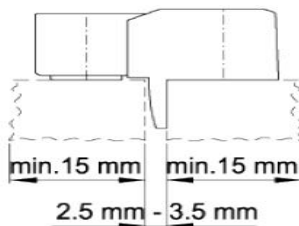


Elesa Standards		Main dimensions			Weight
Code	Description	H	H ₁	H ₂	g
6253	BPS.30-SP5	5	19	6	3
6254	BPS.30-SP10	10	23	8	4
6255	BPS.30-SP15	15	28	9	5

Features and applications

BPS ball-shaped door lock (ELESA patent) consists of a clamp to be fixed to a frame and a ball to be fixed to a door. The clamp, in which the ball fixed to the closing door is inserted, is a mechanical stop device also to the door movement, thanks to its shape. The screws, that fix the clamp and the ball respectively to the frame and to the door, are identical. Thus, making the assembly easier. Under specific tests, the clamp showed constant performances for more than 20.000 cycles. The ball-shaped door lock has been conceived for use with both shutter doors and sliding doors. The minimum thickness for the profile suitable for use is 15 mm, while the distance between door and frame must be within 2.5 mm and 3.5 mm (fig.1).

Fig.1



Thickness differences between frame and door	Spacer to be used	Description
0	-	-
5 mm	5 mm	BPS.30-SP5
10 mm	10 mm	BPS.30-SP10
15 mm	15 mm	BPS.30-SP15
20 mm	10 mm + 10 mm	BPS.30-SP10 + BPS.30-SP10
25 mm	10 mm + 15 mm	BPS.30-SP10 + BPS.30-SP15
30 mm	15 mm + 15 mm	BPS.30-SP15 + BPS.30-SP15

Examples of BPS.30-SP spacers assembly

