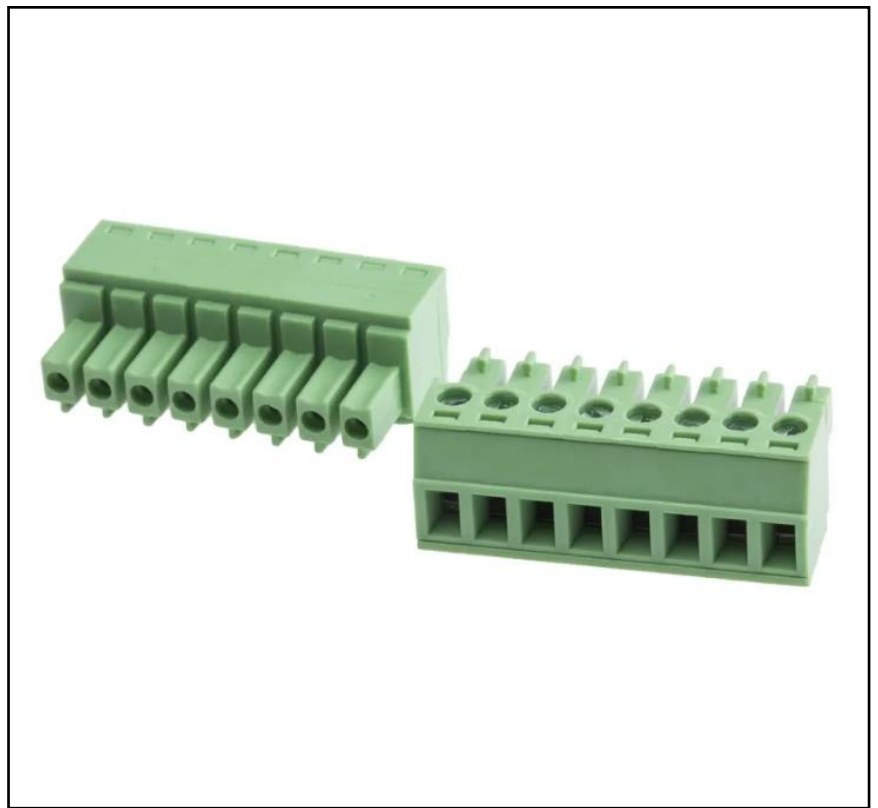


FEATURES

- 8 contacts
- Pitch of 3.81 mm
- Single row
- Through-hole mounting
- Female
- Screw termination method
- Right angle body orientation
- Voltage rating of 125 V
- Current rating of 8 A
- Made of Polyamide (green)
- Dimensions of 31.27 mm (L) x 11.2 mm (W) 15.5 mm (D)

RS PRO 3.81mm Pitch, 8 Way PCB Terminal Block

RS Stock No.: 897-1092



RS PRO Professionally Approved Products bring to you professional quality parts across all product categories. Our product range has been tested by engineers and provides a comparable quality to the leading brands without paying a premium price.

Product Description

An efficient and straightforward way to connect two or more wires, this 8-way printed circuit board (PCB) terminal block is used in conjunction with PCB header blocks. It can be mounted directly onto a PCB and is versatile and installation is straightforward.

General Specifications

Number Of Contact	8
Number Of Rows	1
Mounting Type	Through Hole
Gender	Female
Termination Method	Screw
Type	Plug
Body Orientation	Right Angle
Colour	Green
Material	Polyamide
Flammability Rating	UL 94 V-0
Applications	PCB

Electrical Specifications

Current Rating	8A
Voltage Rating	125V
Insulation Resistance	5000M Ω
Insulation Withstand Voltage	2000Vac/1min
Contact Resistance	20m Ω

Mechanical Specifications

Pitch	3.81mm
Depth	15.5mm
Width	11.2mm
Length	31.27mm
American Wire Gauge	16AWG to 26AWG
Recommended PCB Hole Size	1.4mm
Recommended Tightening Torque	0.2Nm

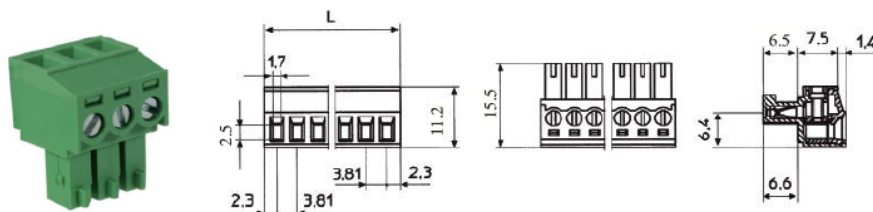
Operation Environment Specifications

Operating Temperature Range	-33°C to 120°C
-----------------------------	----------------

Approvals

Compliance/Certifications	EN61340
---------------------------	---------

3.81mm Pitch Pluggable Rising Clamp Terminal



Female connector

TYPE NO.	POLES	LENGTH
8971070	2	8.41mm
8971089	3	12.22mm
8971082	4	16.03mm
8971086	5	19.84mm
8971095	6	23.65mm
8971098	7	27.46mm
8971092	8	31.27mm
8971102	9	35.08mm

- 2-20 pole solid block
- Pluggable male-female connectors
- Closed headers
- Horizontal & vertical female plug styles
- Polarised mouldings
- Moulded in green UL94-V0 flame retardant PA66
- Professional rising clamp terminals
- 0.13-1.31mm² (26-16AWG) solid & stranded cable
- Captive screws
- Guided pin alignment
- approved

SPECIFICATION	
Rating	8A 125 V
Insulation resistance	5000MΩ/1000V
Withstand Voltage	AC2000V/1min
Contact Resistance	20mΩ
Working Temperature	-33°C to +120°C
Mouldings	UL94-V0 flame retardant PA66
Wire Protector	Tin plated
Screw/Torque	M2 Steel, Tin Plated 0.2Nm
Recommended PCB hole size	ø1.4mm