

Datasheet

RS PRO professional grade tool for crimping type C, D, E and Y turned, pin and socket connectors 0.14 – 4.0 mm².

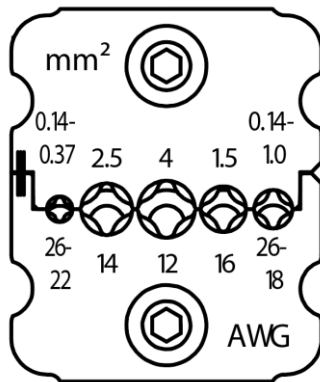
Stock No: 2080638



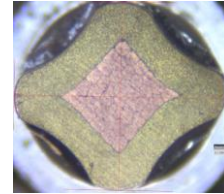
Features & Benefits:

- Five crimp nests for precision crimping
- Adjustable locator for male and female contacts
- High strength, through hardened alloy steel construction
- Versatile and easy to use
- Full cycle crimp mechanism to ensure consistent, reliable crimp
- Ratchet release mechanism to clear miss-crimps and obstructions
- Precision eccentric adjustment for consistent performance and ability to calibrate
- Each tool has a unique serial number for traceability

Crimp Die Set



Crimp Profile



TECHNICAL DATA

Length: 230 mm/9.06"

Width: 35 mm/1.38"

Height: 75 mm/2.95"

Weight: 472 gr/1.04 lb

Wire size: 0.14-4.0 mm² / AWG 26-AWG 12

Crimp nest dimensions mm/mm²:

0.14 - 0.37 mm², 0.14 - 1.0 mm², 1.5 mm², 2.5 mm², 4.0 mm²

Crimp dimensions inch/AWG:

AWG 26 - AWG 22/AWG 26 - AWG 18/AWG 16 / AWG 14/AWG 12

Connector: Turned/machined contacts

Description: Type C, D, E and Y type pins and sockets

Life span, cycles: 50,000