

Datasheet

Fast Acting Ceramic Tube Fuse, 8-10A, 6.3x32mm

Stock No: 1778050, 1778051

RS Pro



Specifications:

Materials

Tube (Body): Non-Transparent ceramic tube fuse. No breaking or deformation is allowed.

Two brass end caps: Made of brass of good conductivity.

Coating of brass caps: Plating the surface with nickel. If the indication is added with "S", it needs to be plated with silver.

Interrupting Ratings

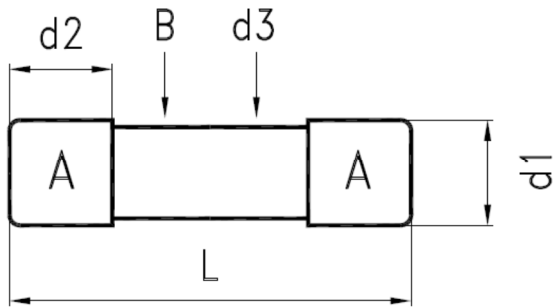
0.1A~20A: 10000 amperes at 125VAC

0.1A~10A: 750 amperes at 250VDC

3.75A~10A: 200 amperes at 250V AC

Operating Temperature

-55°C to +125°C

Drawing (mm):


NO.	Part Name		Volume
A	Brass Cap	Nickel Plating	2
B	Ceramic Tube	Non-Transparent Ceramic Tube	1
d1	Dia. of Cap	6.35±0.1mm	
d2	Height of Cap	6.45±0.1mm	
d3	Dia. of Ceramic	5.72±0.2mm	
L	Body of Fuse	31.75±0.75mm	

Electrical Characteristic:

Rating	100% Rating		135% Rating		200% Rating	
	Min.	Max.	Min.	Max.	Min.	Max.
0.1A~30A	4 Hrs	-	-	1 Hrs	-	30 sec

Mark Approvals		Nominal Resistance		Nominal Melting I ² t	
		Cold Ohms		A ² Sec	
8	A	0.0124		115.20	
10	A	0.0105		255.46	



ENGLISH

Reference:

Stock No	Rating amperes
1778050	8A 250V
1778051	10A 250V