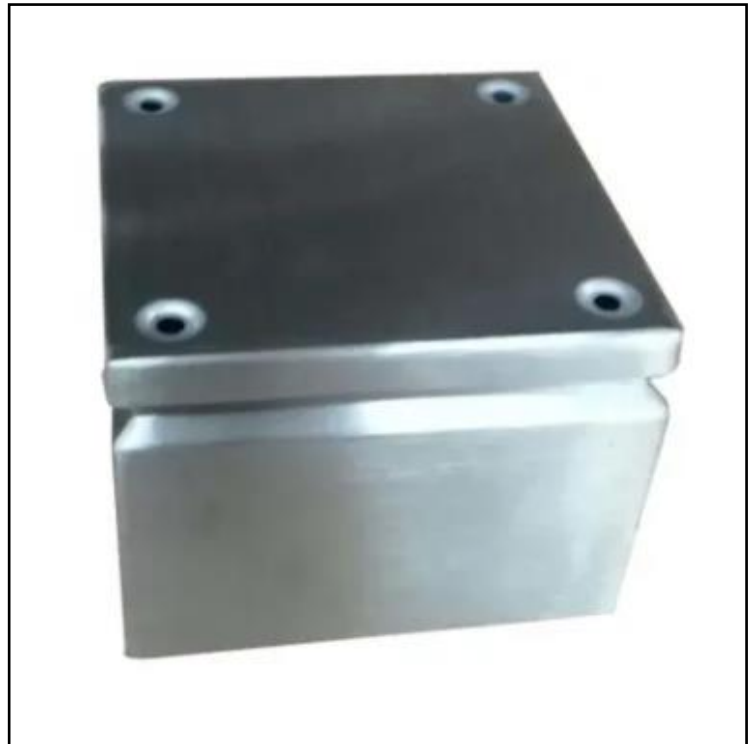


FEATURES

- Lids with black neoprene gasket and 4 x M6 captive hexagon headed screws
- Operating temperature -20°C to +110°C
- Multiple DIN rail fixing points, M5
- External M6 earthing stud
- Manufactured from stainless steel offering excellent durability and corrosion resistance
- IP66 rating offering excellent weatherproof protection
- Suitable for a wide range of applications indoors and outdoors

RS PRO Junction Boxes

RS Stock No.: 8428333



RS Professionally Approved Products bring to you professional quality parts across all product categories. Our product range has been tested by engineers and provides a comparable quality to the leading brands without paying a premium price.

Product Description

RS PRO Stainless Steel Terminal Box, IP66, Unpainted

Introducing stainless steel terminal boxes from RS PRO, a range of high quality and durable terminal box enclosures for housing DIN rail terminals and accessories in a range of electrical applications. With multiple DIN rail fixing points included, these junction boxes are perfect for installing and protecting electrical wires, connectors and cables, as well as providing a protective case for switches and more.

These junction boxes are manufactured from stainless steel, offering a highly durable and sturdy enclosure that can be installed in a wide range of environments. The terminal boxes also feature a black neoprene gasket with an IP66 rating, offering excellent weatherproof protection making them ideal for use both indoors and outdoors. These RS PRO stainless steel terminal boxes also feature a wide operating temperature of -20 to +110°C making them highly versatile, allowing them to be used in environments with varied temperatures.

General Specifications

Body Material	1.2mm AISI 304 finish stainless steel
Base Material	1.2mm AISI 304 finish stainless steel
Gasket Material	A black neoprene
Application	Power Management
Colour	Unpainted
Lid Colour	Unpainted
Temperature Range	-20°C to +110°C
Shape	Rectangular
Surface Finishing	Untreated
Cover Locking	Screw

Mechanical Specifications

External Length	300 mm
External Width	300 mm
External Height	120 mm
Internal Dimensions	300 x 300 x 120mm

Protection Category

IP Rating	IP66
------------------	------

Approvals

Declarations	RoHS Certificate of Compliance
--------------	--------------------------------

Similar Products

Stock No.	Brand	Product Name	Material	Dimensions
1444457	RS PRO	Junction Box	Glass Reinforced Polystyrene	220mm x 120mm x 90mm
749-1857	RS PRO	Junction Box	Stainless Steel	150mm x 80mm x 150mm

Connection Diagrams / Assembly Diagrams / Illustrations / Accessories

Drawings:

