

FEATURES

- Rated currents from 20A
- Designed for enhanced filtering
- Designed for enhanced filtering
- Excellent differential and common-mode attenuation

RS PRO Power Line Filters

RS Stock No.: 2378733, 2378734



RS Professionally Approved Products bring to you professional quality parts across all product categories. Our product range has been tested by engineers and provides a comparable quality to the leading brands without paying a premium price.

Product Description

Power Line Filters

Product Description

- Electrical and electronic equipment
- Medical equipment
- Building automation
- Office automation and datacom equipment

General Specifications

Designed 2 stage enhanced filtering to prevent the power supply may produce interference to the device Various terminal options allow you to select. There are a variety of parts and combinations to meet different customer's EMC tests Customized products according to customer's requirements

Mechanical Specifications

size	44.5X50.5X30mm (L X W X H)
weight	0.123kgs

Electrical Specifications

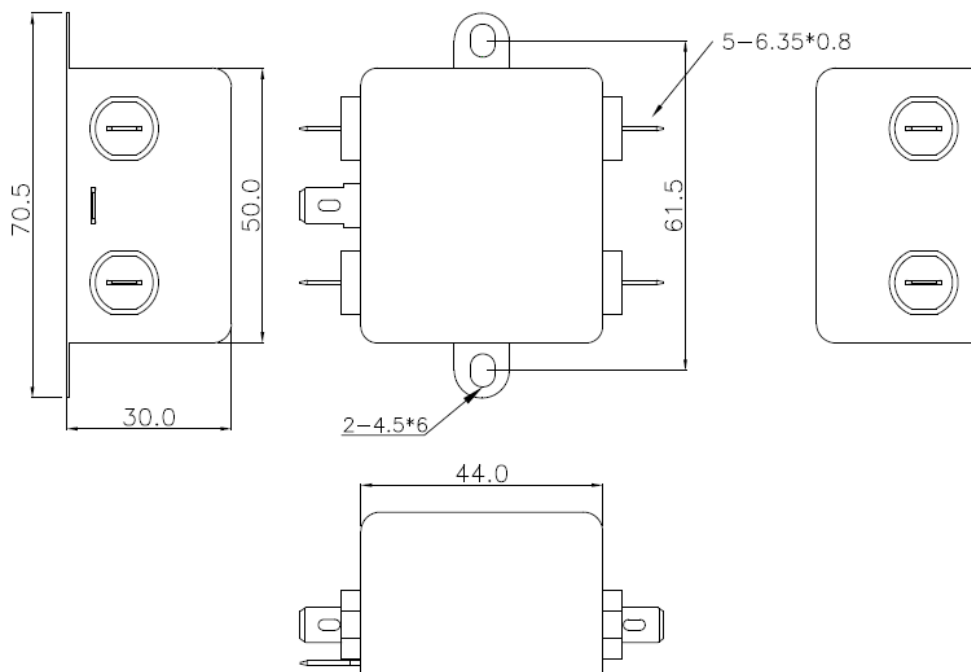
Rated Voltage Max.	250VAC,50/60Hz
Operating frequency	DC to 400Hz
Rated currents	1A@40°C
Hipot Rating	L-N 1450VDC L/N-G 2000VAC/2250VDC

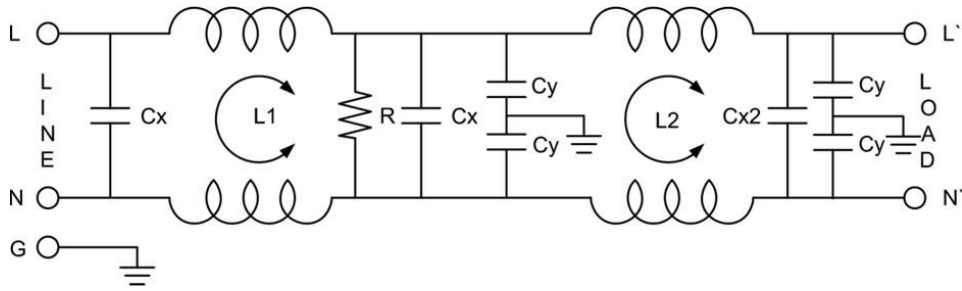
Protection Category

according to IEC 60529 IP40

Approvals

Declarations	CUL;TUV;CQC;CE
Standards Met	UL1283, CSA C22.2 No.8; IEC/EN 60939;; CQC GB 15288/GB 15287-2008

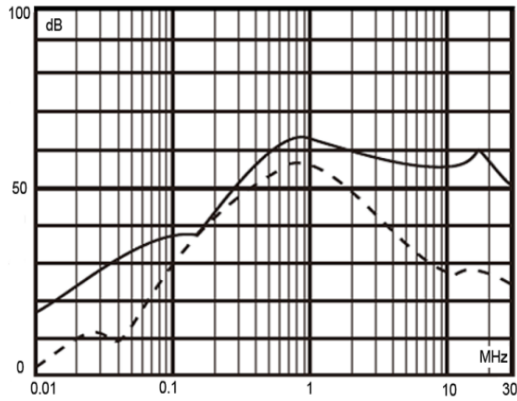
Physical Dimensions:**Electrical Schematic:**



Insertion loss table(In 50ohm system according IEC/CISPR No.17)

———— Common mode - - - - - Differential mode

1A



packaging

