



**Application Guide**  
**Universal Shaver Unit**

**CAT. NO.**  
**KBT727V**

**Vivace**

Thank you for using **Schneider Electric** Vivace Universal Shaver Unit. Please read the following important information before installation and use.

This application guide applies to the following Vivace product.

**Cat No.**

**Description**

KBT727V

115/240V Universal Shaver Unit



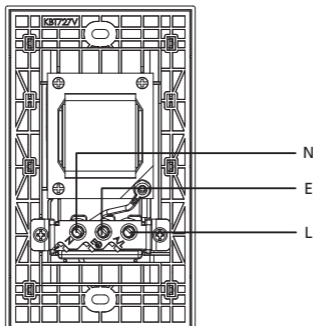
## **SPECIFICATIONS**

Input Voltage	: 240V~ 50/60Hz
Out Voltage	: 115/240V~
Amperage	: 20VA
Dimension	: 146mm x 86mm
Mounting Centre	: 120.6mm
Compliance	: IEC 61558-1, IEC61558-2-5

## IMPORTANT NOTE

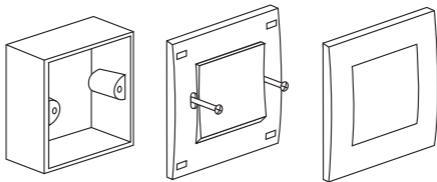
1. Electrical installation must be carried out by a qualified electrician.
2. Please check your local wiring regulations before actual installation.

## WIRING DIAGRAM



## MOUNTING INSTRUCTION

Please refer to the following diagram for proper installation.



Remarks: For surround mounting, align the clip locks on the faceplate and press firm on the surround. Complete engagement of the clip locks is indicated by a clear "click" sound.

