

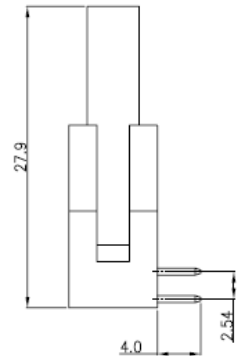
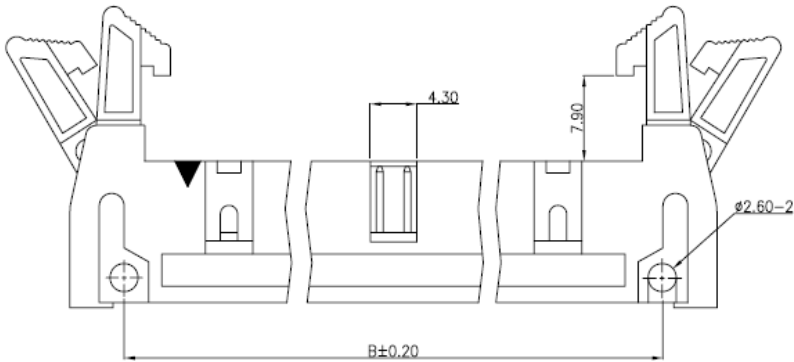
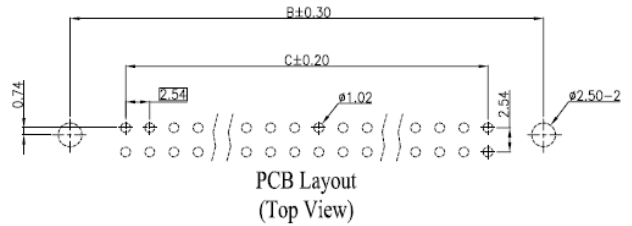
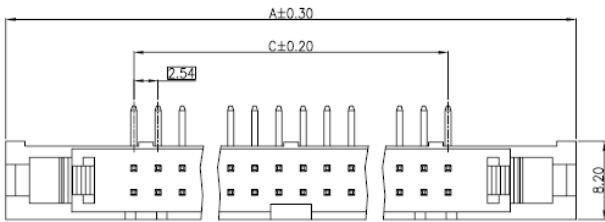


Technical Information

ENGLISH

RS Pro SCP Series 2.54mm Pitch Right Angle Through Hole IDC Connector, Male, 34 Way

Stock No: 471-159





ENGLISH

Specifications

Material and Finish

1. Housing: thermoplastic (UL94V-0), Black
2. Terminal: Sq 0.64mm, Gold Plating

Electrical Characteristics

1. Current Rating: 3.0Amp Max
2. Dielectric Withstand Voltage: 1000V AC RMS for 60 seconds
3. Insulation Resistance: 1000M Ohms Min. at 1000V DC

Mechanical Characteristics

1. Operating Temperature -55 deg C - +105 deg C