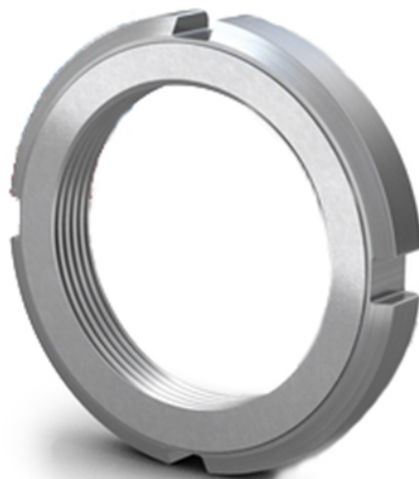


Datasheet

RS PRO Nyloc Nut M80x2mm

Stock No: 196-4162



Technical Specifications:

Id (mm)	80
Od (mm)	105
Width (mm)	15
Material	Steel

Features & Benefits:

Locknuts are used to locate bearings on to a shaft. Additionally, they can be used to mount bearings with a tapered bore onto a tapered shaft seats and adapter sleeves, and to dismount bearings from withdrawal sleeves.

Lock Nuts with integral locking reduce the cost of the shaft as no keyway is required.

Installation is quicker and easier because no separate device is necessary.