
L 8 W/765

Basic T5 Short | Tubular fluorescent lamps 16 mm, short



Areas of application

- Shops
- Supermarkets and department stores
- Public buildings

Product benefits

- Ideal for cost-effective creative illumination and decoration
- Very good luminous flux maintenance throughout the life of the lamp
- Slim and compact

Product features

- Average lifetime: up to 10,000 h (with QUICKTRONIC ECG)



Product datasheet

Technical data

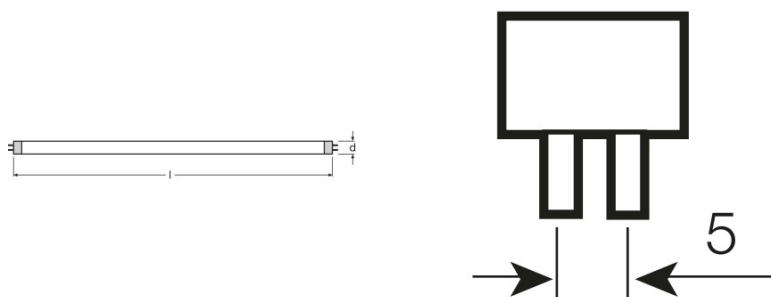
Electrical data

| | |
|-------------------------------------|---|
| Nominal wattage | 8.00 W |
| Rated lamp efficacy (HF data 25 °C) | Under clarification by authority and standardization body |
| Rated wattage | 8.00 W |

Photometrical data

| | |
|---------------------------|---------------|
| Luminous flux at 25 °C | 330 lm |
| Light color | 765 |
| Light color (designation) | Cool Daylight |

Dimensions & weight



| | |
|---|-----------|
| Tube diameter | 16 mm |
| Length | 288.0 mm |
| Length with base excl. base pins/connection | 288.00 mm |
| Diameter | 16.0 mm |

Lifespan

| | |
|------------------------|----------------------|
| Service life | 4500 h |
| Lifespan | 8000 h ¹⁾ |
| Rated lamp life time | 5000 h |
| Nominal lamp life time | 5000 h |

¹⁾ With CCG/LLCG

Additional product data

| | |
|-----------------------------|--------|
| Base (standard designation) | G5 |
| Lamp mercury content | 2.5 mg |

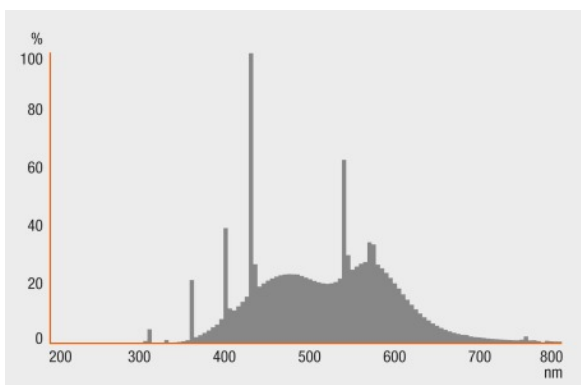
Product datasheet

| | |
|-----------------------------------|-----|
| Appropriate disposal acc. to WEEE | Yes |
|-----------------------------------|-----|

Certificates & standards

| | |
|-------------------------|-------------|
| Energy efficiency class | B |
| Energy consumption | 9 kWh/1000h |

Light Distribution



Spectral power distribution

System guarantee

OSRAM System+ Guarantee in combination with OSRAM ECGs

Product datasheet



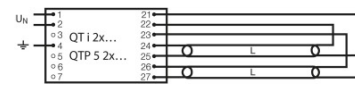
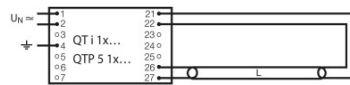
Guarantee

Safety advice

In case of lamp breakage: www.osram.com/brokenlamp



Die Zuleitungen 3 und 4 sollen so kurz wie möglich sein



Circuit diagram

Circuit diagram

Circuit diagram

Logistical Data

| Product code | Product description | Packaging unit (Pieces/Unit) | Dimensions (length x width x height) | Volume | Gross weight |
|---------------|---------------------|---------------------------------|---|----------------------|--------------|
| 4050300035475 | L 8 W/765 | Shipping carton box 25 | 320 mm x 105 mm x 105 mm | 3.53 dm ³ | 973.10 g |

The mentioned product code describes the smallest quantity unit which can be ordered. One shipping unit can contain one or more single products. When placing an order, for the quantity please enter single or multiples of a shipping unit.

References / Links

For more information on the system guarantee and the terms and conditions of the guarantee visit

▶ www.osram.com/system-guarantee

Product datasheet

For more information on QUICKTRONIC electronic control gear go to

▶ www.osram.com/QUICKTRONIC

Disclaimer

Subject to change without notice. Errors and omission excepted. Always make sure to use the most recent release.