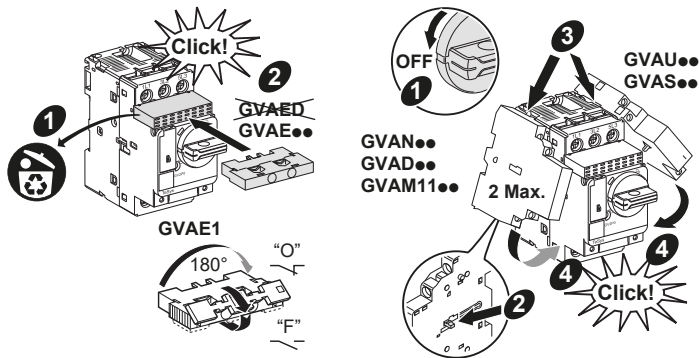
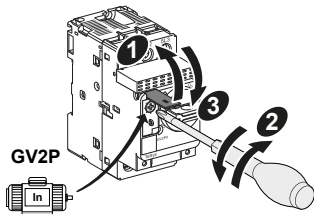
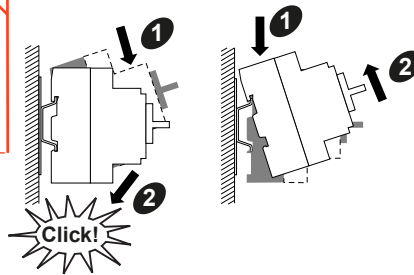
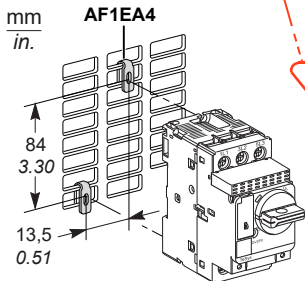


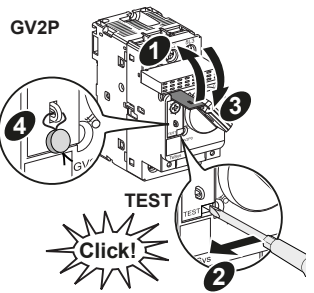
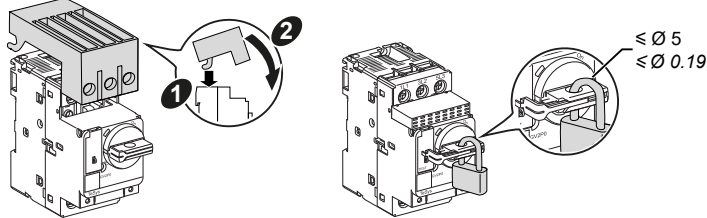


⚠ ⚠ DANGER / PELIGRO / DANGER / 危險	
<p>HAZARD OF ELECTRIC SHOCK, EXPLOSION, OR ARC FLASH Disconnect all power before servicing equipment. Failure to follow these instructions will result in death or serious injury.</p>	<p>PELIGRO DE DESCARGA ELÉCTRICA, EXPLOSIÓN O ARCO ELÉCTRICO Desconecte todas las alimentaciones antes de manipular el producto. Si no se siguen estas instrucciones provocará lesiones graves o incluso la muerte.</p>
<p>RISQUE D'ÉLECTROCUTION, D'EXPLOSION OU D'ARC ELECTRIQUE Coupez toutes les alimentations avant de travailler sur cet appareil. Le non-respect de ces instructions provoquera la mort ou des blessures graves.</p>	<p>可能有触电、爆炸或者电弧灼伤的危險 在此电力设备上工作时 请先切断所有电源。 不遵循上述规定将可能导致人员伤亡。</p>

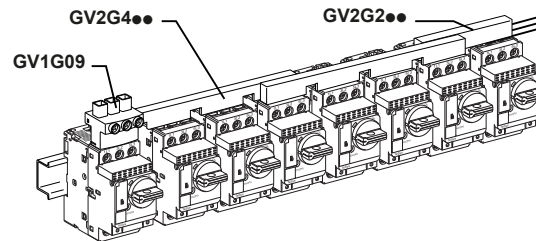




GV2GH7



10 mm	1...6 mm ²	1,5...6 mm ²	1...4 mm ²	1,7 N.m
0.4 in.	AWG 18...10	AWG 16...10	AWG 18...10	15 lb-in

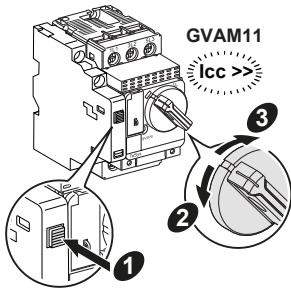


GV2P●●/Le●

Schneider Electric Industries SAS
35, rue Joseph Monier - CS 30323
F - 92506 Rueil Malmaison Cedex
www.se.com/contact

04/2021
W9 1675463 ..11 A11

© 2021 Schneider Electric - All rights reserved.



Schneider Electric Limited
Stafford Park 5
Telford, TF3 3BL
United Kingdom
www.se.com/uk

