

Features

- Material: En8 or equivalent
- Single (1R) & Double (2R) Start
- Right Hand
- Bore tolerance H7

RS PRO Metric Worms 0.8 Mod-1 Mod

RS Stock No.: 521-6890



RS PRO Professionally Approved Products bring to you professional quality parts across all product categories. Our product range has been tested by engineers and provides a comparable quality to the leading brands without paying a premium price.

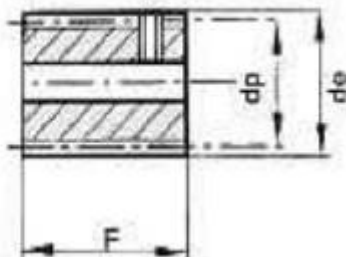
Product Description

Worm gears and pinion gears designed to produce large speed reduction ratios, especially in low loading applications. Available in modules 0.8 and 1.0. Both the pinion gear and worm gear module number / number of starts must match to ensure correct assembly.

General Specifications

Material	En8 or equivalent
Pressure Angle	20 degree p.a.
Bore tolerance	H7

TYPE D



All dimensions in mm
 Standard tolerances, unless otherwise stated + - 0.25mm All worms are supplied with black oxide finish
 They are supplied with a M4 G/S fitted (5mm from one end)
 1R=Single Start
 2R=Double Start

Similar Products

RS Article Number	Code	Pitch Module	dp	de	Bore	F	Type
5218559	SWB08/1R	0.8	14	15.6	6	30	D
5216812	SWB08/2R	0.8	14	15.6	6	30	D
5216890	SWB10/1R	1	16	18	6	32	D
5216907	SWB10/2R	1	16	18	6	32	D