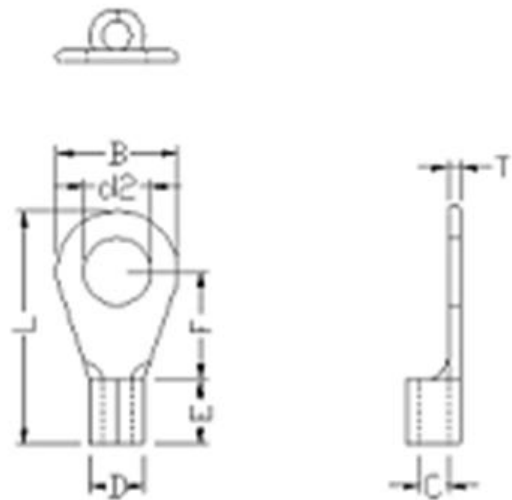


Datasheet

RS Pro Crimp Ring Terminal

RS Stock No: **433-028A**



Product Details

RS Pro crimp ring terminal suits cables from 0.5 mm² to 1.5 mm² and 1.0 mm² to 2.5 mm².

Features and Benefits

- Sheet formed terminal
- Copper contacts
- Accommodates cables of size 0.5 mm² to 1.5 mm² and 1.0 mm² to 2.5 mm²

Specifications:

Contact Material	Copper
Contact Plating	Tin
Inner Ring Diameter	3.7 mm
Insulation	Uninsulated
Maximum Wire Size (AWG)	16 AWG
Maximum Wire Size (mm ²)	1.5 mm ²
Minimum Wire Size (AWG)	22 AWG
Minimum Wire Size (mm ²)	0.5 mm ²
Outer Ring Diameter	6.6 mm
Overall Length	14.5 mm
Stud Size	#6
Thickness	0.8 mm
Wire Size	22 to 16 AWG
Temperature Rating	+75°C
Voltage Rating	600 V
Amperage Rating	9 to 18 A
Type	Butted Seam Barrel



Model No.	Insulation Colour	Wire Range Mm2/Awg	Stud Size	d2	W	F	L	E	D	d1	T
377037	Red	0.5-1.5mm2/22-16AWG	#6	3.7	6.6	6.3	14.5	10.0	4.0	1.7	0.8

1. Maximum Electric Current: (最大電流)

22-16AWG / 0.5-1.5mm²: 19A

16-14AWG / 1.5-2.5mm²: 27A

12-10AWG / 4-6mm²: 48A

2. Terminal Body: Copper (端子材質: 紅銅)

3. Insulation: (護套材質:)

4. Plating: Tin (表面處理: 鍍錫)

NBT—Non-Insulated butted seam

NB—Non-insulated brazed seam