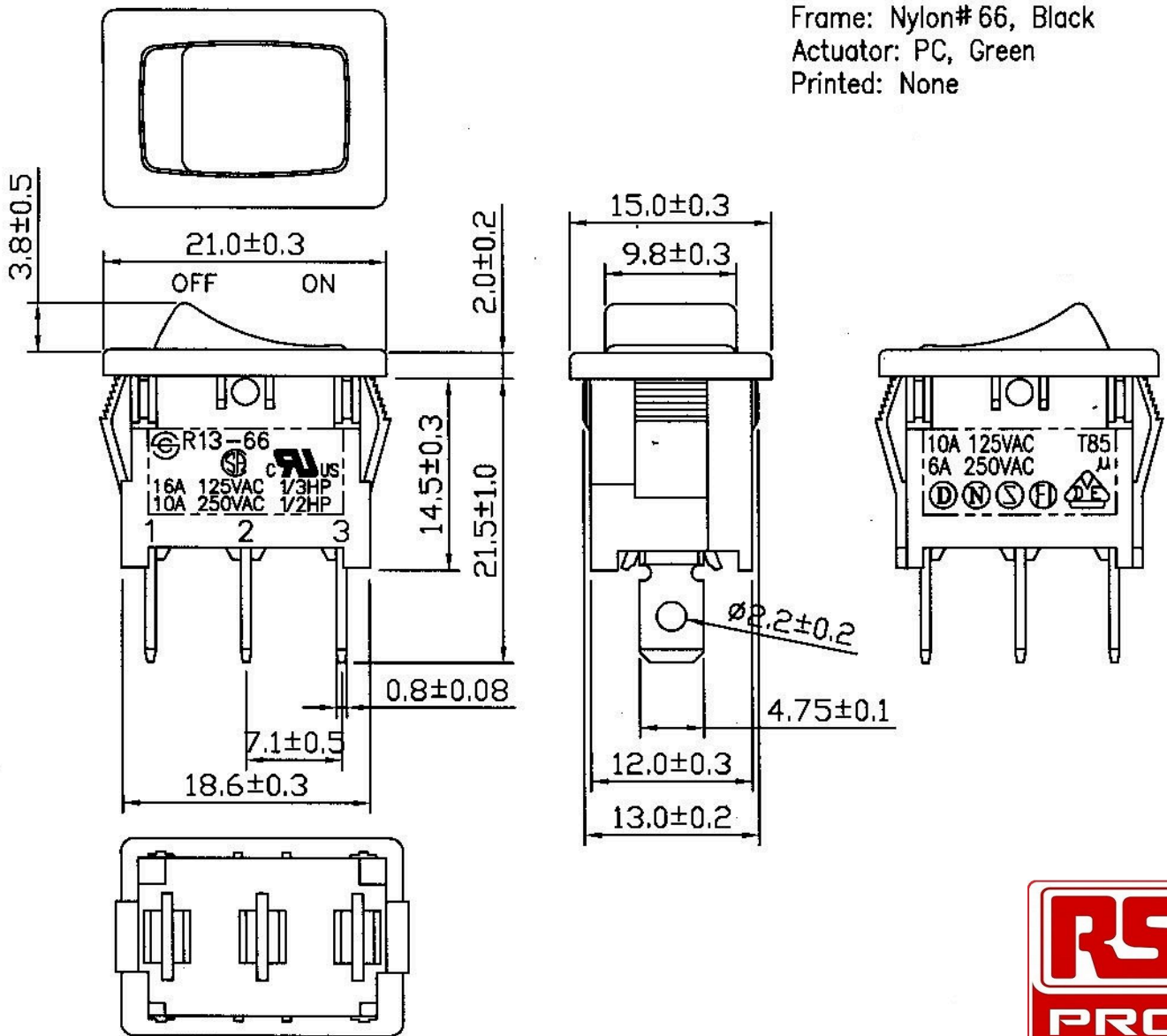


Rating	10A 125V, 6A 250V AC	Mounting Hole	Circuit Diagram											
	16A 125VAC 1/3HP 10A 250VAC 1/2HP													
Contact Resistance	50m ohm Max.													
Insulation Resistance	DC 500V 100M ohm Min.													
Dielectric Strength	AC 1500V 1 minute	<table border="1"> <tr> <th>Thickness</th> <th>X</th> <th>Y</th> </tr> <tr> <td>0.75...1.25</td> <td>19.2-0.1</td> <td>13.2+0.1</td> </tr> <tr> <td>1.25...2</td> <td>19.4-0.1</td> <td>13.2+0.1</td> </tr> <tr> <td>2...3</td> <td>19.8-0.1</td> <td>13.2+0.1</td> </tr> </table>	Thickness	X	Y	0.75...1.25	19.2-0.1	13.2+0.1	1.25...2	19.4-0.1	13.2+0.1	2...3	19.8-0.1	13.2+0.1
Thickness	X		Y											
0.75...1.25	19.2-0.1		13.2+0.1											
1.25...2	19.4-0.1	13.2+0.1												
2...3	19.8-0.1	13.2+0.1												
Operation Temperature	-20°C~85°C													
Switch Function	3P SPST ON-OFF(Illuminated)													

Material:
Frame: Nylon# 66, Black
Actuator: PC, Green
Printed: None



CB\R13\R13-66BW-02(1820373)

						△	
						△	
Date	Name	Description				NO	
Drawn	Checked	Approved	SCI BOM NO.	1820373	Model Name	ROCKER SWITCH	
曹盈芳	<i>[Signature]</i>		Customer No.		Model No.	R13-66BW-02	REV.
12/12/07	<i>[Signature]</i>		Unit	mm			0