

FEATURES

- Nylon Polyamide 6
- Zinc plated steel studs and alloy female threads
- Matte black finish
- Working temperature range of -30°C to +85°C
- Melting point of +215°C
- Tolerant of weak acids, with excellent resistance to chlorinated hydrocarbons

RS PRO Black Multiple Lobes Clamping Knob, M10

RS Stock No.: 161-240



RS Professionally Approved Products bring to you professional quality parts across all product categories. Our product range has been tested by engineers and provides a comparable quality to the leading brands without paying a premium price.

Product Description

Knobs are used in a wide variety of applications in our day-to-day lives and perform many functions, from being used as fixed handles to being used to tighten, loosen, adjust and push other components or pieces of equipment. They are used in various applications, from industrial and construction machinery to audio and visual equipment.

Female knobs: M5 (RS [161076](#)), M6 (RS [161082](#)), M6 (RS [161098](#)), M6 (RS [161105](#)), M8 (RS [161111](#)), M10 (RS [161127](#)).

Male knobs: M5 (RS [161133](#)), M6 (RS [161149](#)), M6 (RS [161155](#)), M8 (RS [161161](#)), M6 (RS [161177](#)), M8 (RS [161183](#)), M8 (RS [161199](#)), M10 (RS [161206](#)).

Through-threaded knobs: M6 (RS [161212](#)), M6 (RS [161228](#)), M8 (RS [161234](#)), M10 (RS [161240](#)).

General Specifications

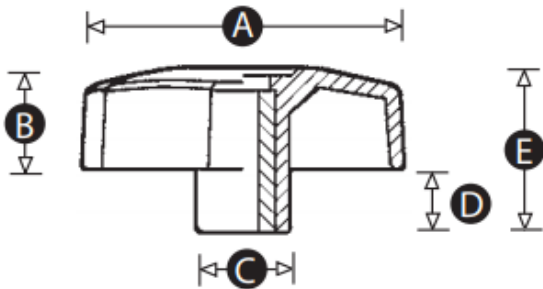
Thread	M10
Knob Shape	Multiple Lobes
Mounting Type	Threaded Through Hole
Body Material	High impact resistant thermoplastic
Insert Material	Brass
Colour	Black
Finish	matt finish
Application	Tripods, Machinery, Audio equipment

Mechanical Specifications

Thread Diameter	10mm
Thread Length	15mm
Knob Diameter	60mm
Hole Diameter	19mm
Hole Length	30mm

Approvals

Compliance/Certifications	EN61340
----------------------------------	---------



Part No.	A	B	C	D	E	Thread size
161212	40	12	15	8	20	M6
161228	50	15	15	9	24	M6
161234	50	15	15	9	24	M8
161240	60	18	19	12	30	M10