

## FEATURES

- Ideal for general purpose use. Contacts are polarised to ensure correct connection
- Miniature connector size
- IEC colour coded
- The International Electrotechnical Commission (IEC) is an international standards organisation that prepares and publishes international standards.

# RS PRO Miniature Thermocouple Connector Plug & Socket IM-T-M+F Type T IEC

RS Stock No.: 455-9938



RS Professionally Approved Products bring to you professional quality parts across all product categories. Our product range has been tested by engineers and provides a comparable quality to the leading brands without paying a premium price.

## Product Description

*With flat pins to suit thermocouple type and ideal for general purpose use, all contacts are polarised to ensure correct connection. These connectors will accept thermocouple cable up to 4mm in diameter.*

## General Specifications

<b>General Description</b>	Ideal for general purpose use. Contacts are polarised to ensure correct connection.
----------------------------	---

## Specifications

<b>Thermocouple Type</b>	T IEC
<b>Connector Size</b>	Miniature
<b>Connector Type</b>	Plug & Socket
<b>Colour</b>	Brown
<b>Max. Temperature</b>	220°C
<b>Pins</b>	Flat Pins
<b>+ Positive Contact</b>	Copper
<b>- Negative Contact</b>	Copper Nickel
<b>Standards Met</b>	BS EN 50212:1997. RoHS

## Approvals

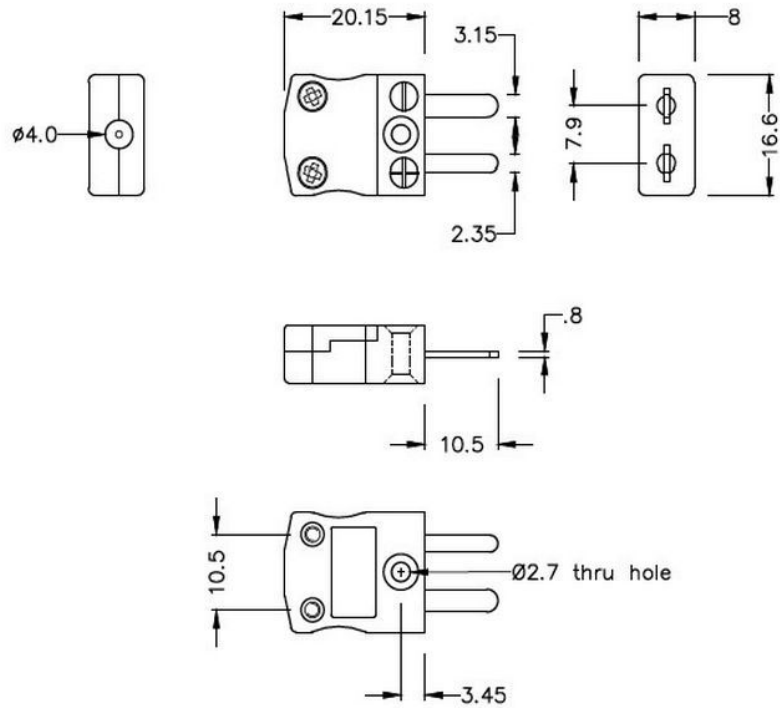
<b>RoHS Compliant</b>	Yes
-----------------------	-----

## Thermocouple Connectors Product Guide

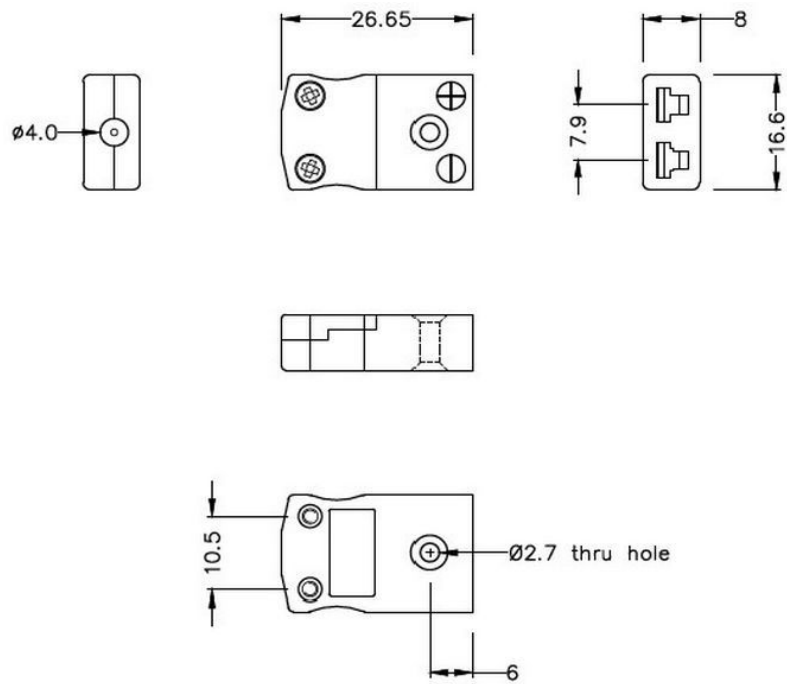
A comprehensive family of miniature and standard Thermocouple Connectors, accessories, panels, terminal and barrier blocks. Available in IEC, ANSI & JIS colour specifications.

[Click below to view:](#)

[RS Pro Thermocouple Connector Selection Guide](#)



**Miniature in-line Plug**  
(dimensions in mm)



**Miniature in-line Socket**  
(dimensions in mm)

RS Components is a leading provider for Automation and Control Gear, below is a selection of best selling products:

<p style="text-align: center;"><b>rspro.com</b></p> <div style="text-align: center;"> </div> <p style="text-align: center;"><b>Temperature. It matters</b></p>	<p style="text-align: center;"><b>Calibration</b></p> <p>Whether it's existing equipment or a new purchase, you need to have confidence in the accuracy of your measurements.</p> <p>That's where our calibration service can help.</p> <p>Purchase new products with confidence.</p> <p>A certificated calibrated sensor straight out of the box, ready to use.</p> <div style="text-align: center;"> <p><b>RTD Detectors</b></p> </div> <p>Wire-wound type provides greater accuracy and stability but are vulnerable to shock.</p> <p>Flat film type are resistant to shock and have quicker thermal response times.</p> <p>Various lengths and diameters available, in class A, B and 1/10th Din.</p>	<p style="text-align: center;"><b>Best Sellers</b> </p> <div style="display: flex; align-items: flex-start;"> <div style="margin-left: 10px;"> <p><b>ANSI SYSCAL Type K Mineral Insulated Thermocouple</b> RS 181-7296</p> </div> </div> <div style="display: flex; align-items: flex-start; margin-top: 10px;"> <div style="margin-left: 10px;"> <p><b>IEC SYSCAL Type K Mineral Insulated Thermocouple</b> RS 181-7288</p> </div> </div> <div style="display: flex; align-items: flex-start; margin-top: 10px;"> <div style="margin-left: 10px;"> <p><b>IEC SYSCAL Type J Mineral Insulated Thermocouple</b> RS 181-7305</p> </div> </div>
<div style="display: flex; align-items: flex-start;"> <div style="margin-left: 10px;"> <p><b>Exposed Junction Thermocouples</b></p> <p>Including exposed junctions with fitted or moulded miniature plug and insulated leads, ideal for test and development applications.</p> <p>1, 2, 3, 5 &amp; 10m lengths available in IEC or ANSI colours.</p> </div> </div> <div style="display: flex; align-items: flex-start; margin-top: 10px;"> <div style="margin-left: 10px;"> <p><b>ANSI Type K Exposed Junction</b> RS 814-0134 Allied 70656459</p> </div> </div> <div style="display: flex; align-items: flex-start; margin-top: 10px;"> <div style="margin-left: 10px;"> <p><b>ANSI Type K High Temp Exposed Junction</b> RS 131-4749 Allied 71080908</p> </div> </div> <div style="display: flex; align-items: flex-start; margin-top: 10px;"> <div style="margin-left: 10px;"> <p><b>IEC Type K Exposed Junction</b> RS 363-0250 Allied 70643600</p> </div> </div>	<div style="display: flex; align-items: flex-start;"> <div style="margin-left: 10px;"> <p><b>Fabricated and Specialist Thermocouples</b></p> <p>Styles include; Magnet, Washer, Nozzle, Leaf, Bayonet &amp; Bolt thermocouple. Various lengths and calibration types available.</p> </div> </div>	<p style="text-align: center;"><b>Best Sellers</b> </p> <div style="display: flex; align-items: flex-start;"> <div style="margin-left: 10px;"> <p><b>Magnet Thermocouple</b> RS 762-1115 Allied 70651739</p> </div> </div> <div style="display: flex; align-items: flex-start; margin-top: 10px;"> <div style="margin-left: 10px;"> <p><b>Heavy Duty Thermocouple</b> RS 762-1128 Allied 70651743</p> </div> </div> <div style="display: flex; align-items: flex-start; margin-top: 10px;"> <div style="margin-left: 10px;"> <p><b>Rubber Patch Thermocouple</b> RS 290-5036 Allied 70642886</p> </div> </div>
<div style="display: flex; align-items: flex-start;"> <div style="margin-left: 10px;"> <p><b>Thermocouple &amp; PRT Cable</b></p> <p>Thermocouple cables are available in IEC or ANSI colour codes. Insulation types include PFA, PTFE, PVC &amp; Fibreglass. Available spool lengths include 10, 25, 50, 100 and 200m.</p> </div> </div> <div style="display: flex; align-items: flex-start; margin-top: 10px;"> <div style="margin-left: 10px;"> <p><b>IEC PVC Insulated Flat Pair</b> RS 219-4573 Allied 70641630</p> </div> </div> <div style="display: flex; align-items: flex-start; margin-top: 10px;"> <div style="margin-left: 10px;"> <p><b>ANSI PFA Insulated Twin Twisted</b> RS 814-0030 Allied 70656106</p> </div> </div> <div style="display: flex; align-items: flex-start; margin-top: 10px;"> <div style="margin-left: 10px;"> <p><b>IEC Glassfibre Insulated Flat Pair</b> RS 236-3836 Allied 70641730</p> </div> </div>	<div style="display: flex; align-items: flex-start;"> <div style="margin-left: 10px;"> <p><b>Thermocouple Connectors</b></p> <p>Range of miniature or standard thermocouple connectors. Available in thermocouple types K, J, T, E, N, RS, B, and copper. IEC, ANSI &amp; JIS colour codes available.</p> </div> </div>	<p style="text-align: center;"><b>Best Sellers</b> </p> <div style="display: flex; align-items: flex-start;"> <div style="margin-left: 10px;"> <p><b>IEC Thermocouple Plug</b> RS 455-9764 Allied 70644391</p> </div> </div> <div style="display: flex; align-items: flex-start; margin-top: 10px;"> <div style="margin-left: 10px;"> <p><b>ANSI Thermocouple Socket</b> RS 769-1127 Allied 70652125</p> </div> </div> <div style="display: flex; align-items: flex-start; margin-top: 10px;"> <div style="margin-left: 10px;"> <p><b>IEC Thermocouple PCB Socket</b> RS 381-7570 Allied 70643749</p> </div> </div>

RS Components is a leading provider for Automation and Control Gear, below is a selection of best selling products:

 <p><b>Mineral Insulated Thermocouples</b></p> <p>Available in various calibration types with a variety of terminations. These include; Thermocouple plugs, Terminal heads and Thermocouple cable</p>	<p><b>Best Sellers</b> </p> <p><b>IEC Thermocouple with PTFE Cable</b> RS 397-1236 Allied 70643843</p> <p><b>IEC Thermocouple with Mini Plug</b> RS 397-1488 Allied 70643863</p> <p><b>ANSI Thermocouple with PFA Cable</b> RS 847-1019 Allied 70658112</p>	 <p><b>NEW PRODUCTS</b></p> <p>RS PRO, the own brand of RS Components, offers an unbeatable range of products across all industries with quality you can trust.</p> <p>New products are constantly added to improve the offering of our product range.</p>	<p><b>NEW PRODUCTS</b> </p> <p><b>Brake Pad Temp Sensor</b> RS 200-0601 Allied 72173869</p> <p><b>RTD Temp Sensor Hirschmann Style</b> RS 200-0594 Allied 72173862</p> <p><b>Washer Thermocouple</b> RS 200-0616 Allied 72173882</p>
 <p><b>Sensors with Industrial Terminal Heads</b></p> <p>Industrial sensors housed in a stainless steel sheath and terminal head protection to IP67. Available as a thermocouple or Pt100.</p>	<p><b>Best Sellers</b> </p> <p><b>Type K 300mm Long</b> RS 787-7829 Allied 70653306</p> <p><b>Type K 200mm Long</b> RS 787-7816 Allied 70653303</p> <p><b>Type K 100mm Long</b> RS 787-7804 Allied 70653235</p>	<p><a href="http://www.rspro.com">www.rspro.com</a></p>  <p><a href="http://www.alliedelec.com">www.alliedelec.com</a></p>	
 <p><b>L60 Fine Wire Thermocouple Welder</b></p> <p>The Thermocouple Welder is a compact, simple-to-use instrument designed for thermocouple and fine wire welding. Supplied with foot switch, spare electrodes, pliers &amp; safety glasses, impact clip and pen plate.</p>	<p><b>Best Sellers</b> </p> <p><b>L60 Fine Wire Thermocouple Welder</b> RS 363-0351 Allied 70825788</p> 		