

Datasheet

19-inch Front Panel, 6U, Grey, Aluminium

RS Stock number 506-126



FEATURE FRONT PANELS

Available in addition to the range of standard 19" front panels, these are unique to the DIPLOMAT case. Manufactured in 3mm etched and anodised aluminium with a high quality surface finish they provide a clean and very attractive frontal appearance. They may be used both on the front and rear of the case and are fitted into the bezel in place of the trims, and in front of the 19" fixing facilities.

Ordering information

Case Size	Panel dimensions			Order code
	Width	Height	Width	
3U	10½"	138,5	304	60-39272
	19"	138,5	520	60-39268
4U	10½"	183	304	60-39273
	19"	183	520	60-39269
6U	19"	272	520	60-39270



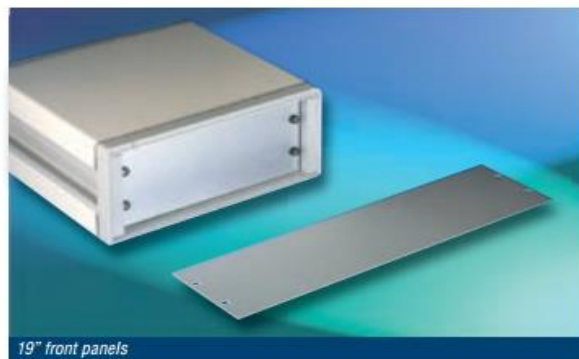
Feature front panels

10½" AND 19" FRONT PANELS

Standard 19" (IEC 297-1, DIN 41494 pt1) front panels are available in satin anodised aluminium of 3mm thickness.

Ordering information

Height	Width	Order code
1U	19"	(482mm) 50-0767
	10½"	(266,7mm) 50-0763
2U	19"	(482mm) 50-0768
	10½"	(266,7mm) 50-0764
3U	19"	(482mm) 50-0769
	10½"	(266,7mm) 50-0765
4U	19"	(482mm) 50-0770
	19"	(482mm) 50-0772
6U	19"	(482mm) 50-0772
9U	19"	(482mm) 50-24284



19" front panels

FRONT BEZEL TRIMS

These provide an attractive finish to the DIPLOMAT cases when the equipment has been installed. They are available in two versions; two-part highlighted and two-part plain.

The highlighted versions are mounted from the front of the unit for easy access and supplied with the standard highlight colour (Pantone green).

The plain version is mounted from the rear of the bezel, providing a clean fronted appearance and offering additional security.

Ordering information

Height	Description	Order code
3U	Plain two part	760-236865
	Colour two part	760-238510
4U	Plain two part	760-236866
	Colour two part	760-238511
6U	Plain two part	760-236867
	Colour two part	760-238512
9U	Plain two part	760-236868
	Colour two part	760-238513



Front bezel trims