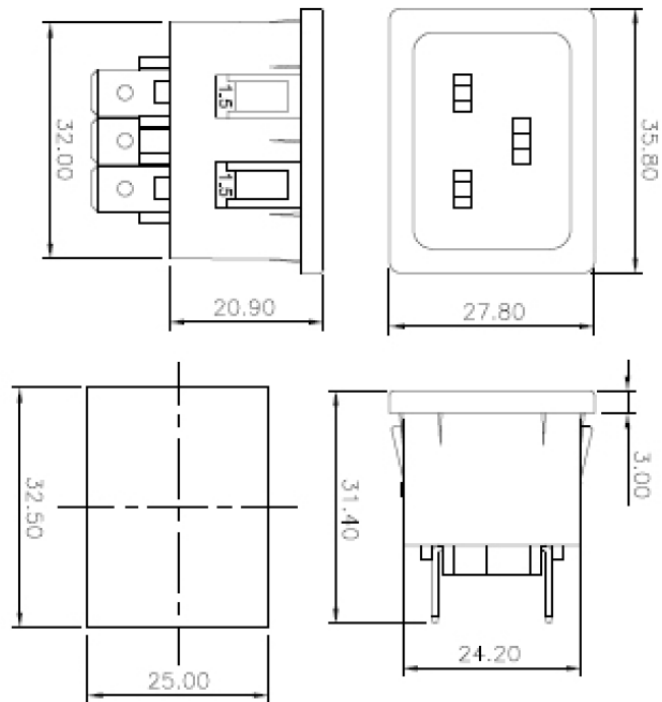


# Datasheet

## Snap Mounting IEC Inlet

RS Stock 896-2136

Dimensions: (mm)



### Specifications

Contact Resistance (Initial):	10 mohms max.
Approvals:	UL(C, US), VDE, CE
Reference Standard:	IEC 60320-1
Mounting:	Panel, Snap-in type
Terminals:	Solder-type / Fast-on 6.3 X 0.8
Panel Thickness:	Standard - 1.5, Other on Request
Permissible temperature - For soldering:	270 deg. C for 5 sec. max.
Permissible temperature - With/without load:	0 to 70 deg C
Material - Terminals:	Copper Alloy, Tin plating
Material - Body:	Nylon-6 20% GF V2
HV Breakdown test for 1 Minute:	2 KV AC
Insulation Resistance at 500 VDC:	1000 M ohms Min.
Current & voltage rating:	16 Amp (VDE), 20 Amp (UL, C,US), 250 VAC