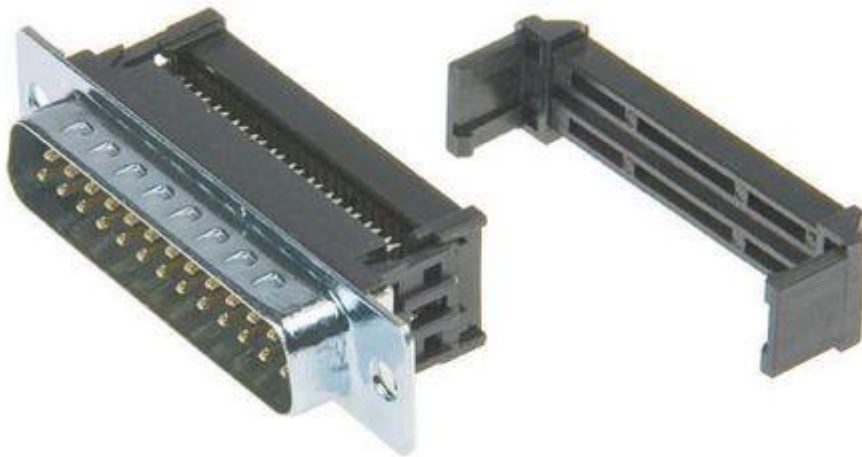


Datasheet

Pitch 37 Way IDC D-sub Connector, Plug, Zinc Plated Steel Shell

RS Stock number [492-636](#)



Specifications:

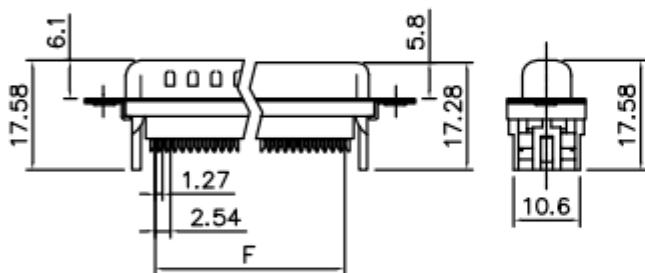
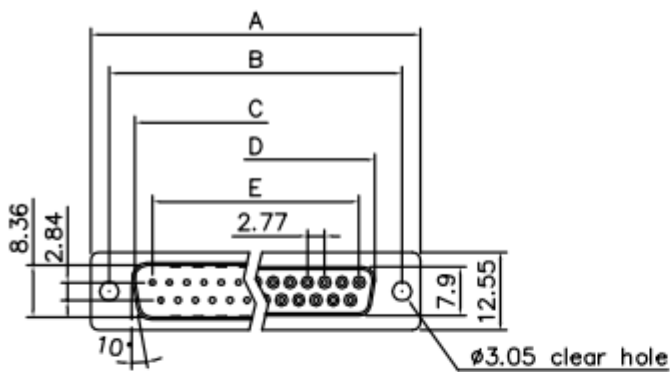
Material

Insulator:	Glass filled thermoplastic PBT, UL94V-0
Contact:	Brass
Shell:	Steel, 100u" tin over 50u" min copper
Clinch Nut:	Brass, nickel plated
Screwlock:	Brass, nickel plated

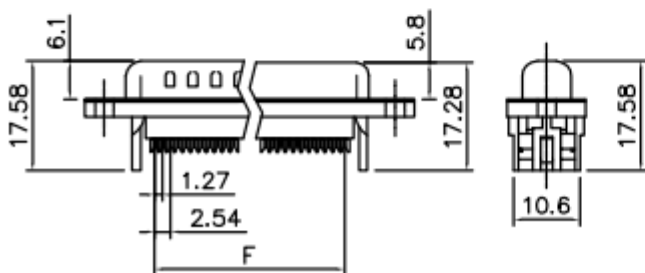
Electrical

Contact Resistance:	20 milliohms, max. at 1A dc
Insulation Resistance:	1000 magohms at 500 VDC
Dielectric withstanding voltage:	1000 VAC/rms 60Hz for 1 minute
Current Rating:	3A
Voltage Rating:	250 VAC/rms 60Hz

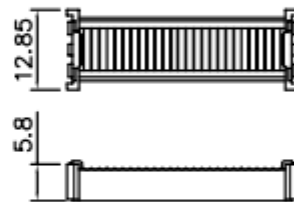
Drawing(mm):



Without Insulator Support



With Insulator Support



Cover



Strain Relief

Dimensions

Positions	A	B	C	D	E	F
9	30.81	24.99	16.92	16.33	11.08	10.16
15	39.20	33.30	25.25	24.66	19.39	17.78
25	53.05	47.04	38.96	38.38	33.24	30.48
37	69.40	63.50	55.42	54.84	49.86	45.72