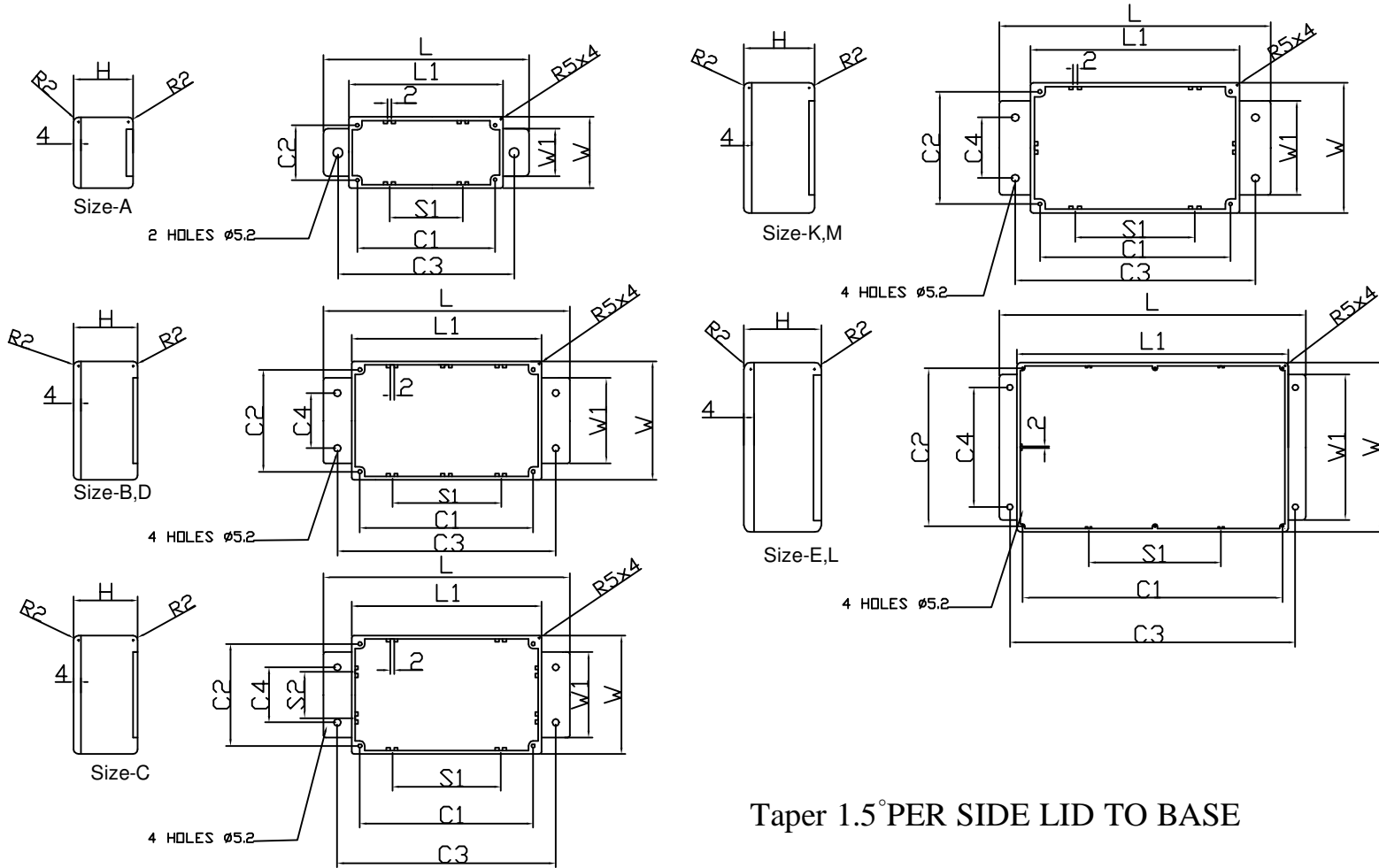


REV/ 版次	REVISION RECORD / 版本敘述	DATE / 日期	NAME / 編修者
A	NEW DRAWING	94/ 02/ 05	廖啟志
B	MEASURED THE DIMENSION OF SAMPLES	JUL. 29, 2005	Spencer
C	MODIFIED RS NEW ITEM NUMBER	OCT. 25, 2005	Spencer
D	MODIFIED RS NEW ITEM NUMBER	JUN. 12, 2007	Jacky



Taper 1.5° PER SIDE LID TO BASE



1	7	TOLERANCE GRADE(±) / 公差	0.5	DIM. / 單位	DWN. / 繪圖	DATE / 日期	TITLE / 型號
2	8			MM	廖啟志	94/ 02/ 05	FLANGED DIE-CAST ALUMINUM BOXES
3	9				CHK. / 審查	DATE / 日期	(with seal, coated Grey)
4	10						
5	11			MATERIAL / 材質	APPD. / 核准	DATE / 日期	DWG. NO. / 圖號
6	12			Aluminum alloy			BSXXMFLG

SHEET / 頁數

1 OF 2

REV/ 版次	REVISION RECORD / 版本敘述	DATE / 日期	NAME / 編修者
A	NEW DRAWING	94/ 02/ 05	廖啟志
B	MEASURED THE DIMENSION OF SAMPLES	JUL. 29, 2005	Spencer
C	MODIFIED RS NEW ITEM NUMBER	OCT. 25, 2005	Spencer
D	MODIFIED RS NEW ITEM NUMBER	JUN. 12, 2007	Jacky

- Material of The base and lid :Aluminium alloy ADC12
- Material of theStainless: Screws M3.5x12mm Supadrivecountersunk head
- Seal:3mm thick balck self-adhesive synthetic rubber, Neoprene providingprotection to IP65
- Finish:Powder Coating
 - 1.Thickness:75~150 Micron inch (1.9um~3.8um)
 - 2.Color: Pantone 650C(Grey RAL 7001)
 - 3.Temperature resistance:
 - Max continuous working temp.120 deg C.
 - Max short peak working temp. 150 deg C.
 - Melting temp. 180 deg C.



Item NO.	Mold NO.	RS Item NO.	Size NO.	L	L1	W	W1	H	C1	C2	C3	C4	S1	S2	Wall Thickness	Taper
BS37MFLG	RS23,26	62148390001	A	113.9	89.1	35.1	25.0	31.0	79.6	25.4			36.0		1.5mm	Base to Lid
BS13MFLG	RS3,27	62148230001	B	139.7	114.6	63.8	44.7	31.0	104.5	54.2	127.0	30.0	60.1		1.5mm	Lid to Base
BS25MFLG	RS13,28	62148450001	C	139.8	114.6	89.7	68.9	56.2	104.5	79.6	127.0	50.0	50.1	36.1	1.5mm	Lid to Base
BS15MFLG	RS3,29	62148670001	D	139.6	114.6	63.8	44.9	56.0	104.6	54.3	127.1	30.0	60.1		2mm	Lid to Base
BS27MFLG	RS15,33	62148510001	E	201.7	172.2	121.2	100.1	56.3	160.6	109.5	189.0	80.0	80.0		2mm	Base to Lid
BS23MFLG	RS11,30	62149460001	M	149.8	120.1	100.2	80.0	35.6	108.2	88.3	137.0	60.0	45.2		2mm	Base to Lid
BS29MFLG	RS17,31	62149300001	K	168.7	139.3	101.6	79.0	76.5	128.8	90.9	157.1	60.1	65.0		2mm	Base to Lid
BS33MFLG	RS20,32	62149520001	L	194.8	165.6	127.4	100.0	77.3	154.1	116.1	182.2	80.0	78.0		2mm	Base to Lid

1	7		TOLERANCE GRADE(±) / 公差	0.5	DIM. / 單位	DWN. / 繪圖	DATE / 日期	TITLE / 型號
2	8				MM	廖啟志	94/ 02/ 05	FLANGED DIE-CAST ALUM NUM BOXES
3	9					CHK. / 審查	DATE / 日期	(with seal ,coating grey)
4	10					APPD. / 核准	DATE / 日期	DWG. NO. / 圖號
5	11				MATERIAL / 材質			SHEET / 頁數
6	12				Al um ni um al l oy			BSXXMFLC 2 OF 2