

## FEATURES

- RoHS compliant
- REACH compliant
- Silicon free

# RS PRO INTERNAL SUPPORT BUSH

RS Stock No.: 2305184



RS PROfessionally Approved Products bring to you professional quality parts across all product categories. Our product range has been tested by engineers and provides a comparable quality to the leading brands without paying a premium price.

## Product Description

The RS PRO internal support bush is made up of brass material. It is water, oil, compressed air compatible. Operating temperature range is from - 60 °C + 300 °C.  
The working pressures and working temperatures depend on which type of tube is used, for this reason, the values must be determined in accordance with the tube's features.

## General Specifications

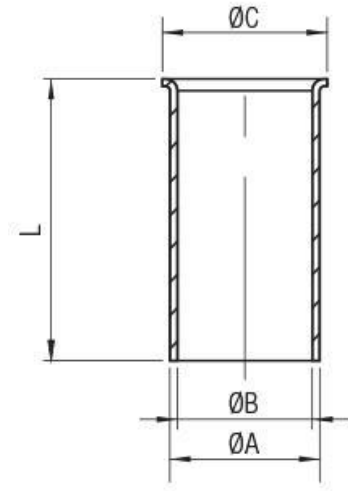
<b>Application</b>	Pneumatic Automation, Automotive, Textile, Packaging, Compressed Air Circuit, Vacuum
--------------------	--

## Mechanical Specifications

<b>Compatible Pipe Size</b>	8mm to 10mm
<b>Maximum Working Pressure</b>	94bar
<b>Tube Size</b>	10/8in
<b>Tube Internal Diameter</b>	7mm
<b>Tube Outer Diameter</b>	8mm
<b>Length</b>	17mm

## Approvals

<b>Approvals</b>	RoHS & REACH compliant
------------------	------------------------



Tube	A	B	C	L	Pack.
10/8	8	7	9	17	10