



ENGLISH

M12 Connectivity

M12, 4 pole, A-coded female, front mounting bulkhead connector with 0.2 M leads

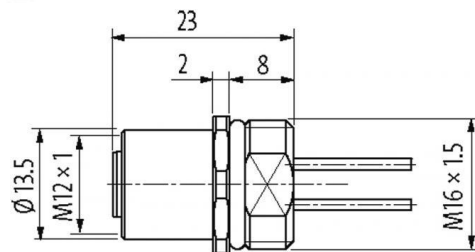
Stock No. 174-7870



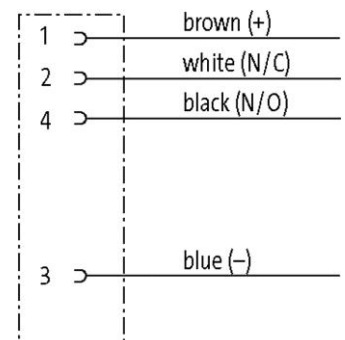
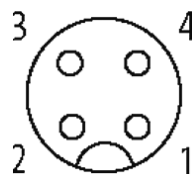
Primary Features

IP67 when inserted and tightened

Available in lengths:
0.2 Metres



Female





Cable

174-7870

Cable number	971
No./diameter of wires	4 × 0.34 mm ²
Wire isolation	PP (br, wh, bl, bk)
Outer Ø	1.3 mm ±5%
Bend radius (fixed)	5 × outer Ø
Temperature range (fixed)	-40...+90 °C
Temperature range (mobile)	-25...+90 °C

Technical Data

Operating voltage	max. 250 V AC/DC
Rated surge voltage	2.5 kV
Operating current per contact	max. 4 A
Material group	IEC 60664-1, category I
Locking of ports	Screw thread M12 × 1 mm (recommended torque 0.6 Nm) self-securing
Compression gland	M12 (SW14)
Protection	IP67 inserted and tightened (EN 60529)
Locking material	Zinc die casting, matte nickel plated
Pollution Degree	3
Temperature range	-25...+85 °C