

Datasheet

RS PRO IP68 USB-A 2.0 – Metal Female Mountable Cable End



The RS PRO series of waterproof metal USB-A connectors are a range of ruggedised IP67/IP68 connectors designed to be used outdoors or in harsher industrial environments. Designed to fit panel cut outs of 25.5mm the metal USB-A series also comes with rear potting on the panel mount connectors. This ensures your panel is still sealed to an IP67/IP68 rating even when the connector is unmated, and the sealing cap is not connected. The threaded mating allows for a secure connection.

Features & Benefits:

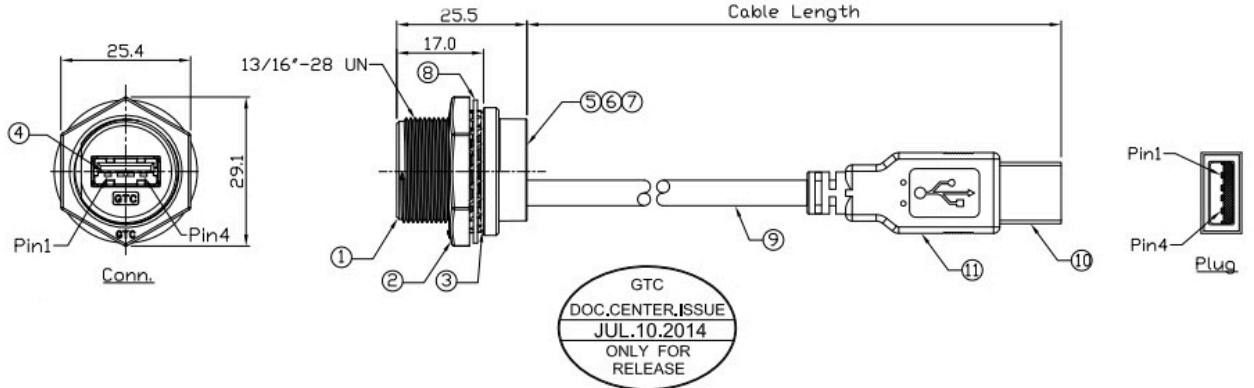
- **Thermoplastic or Nickel Plated Zinc Alloy Housing**
- **IP67/IP68**
- **Rear Potted**
- **Threaded Mating**
- **USB-A 2.0/3.0**

Quality Standards



Dimensional line drawings

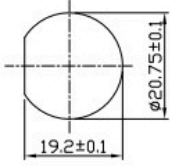
122-3031



GTC
DOC_CENTER_ISSUE
JUL.10.2014
ONLY FOR
RELEASE

Twist	1	Red	1
	2	White	2
	3	Green	3
	4	Black	4
	Shell	Drain	Shell
	Conn.		Plug

Wiring Diagram



Recommend
Panel Cut-Out