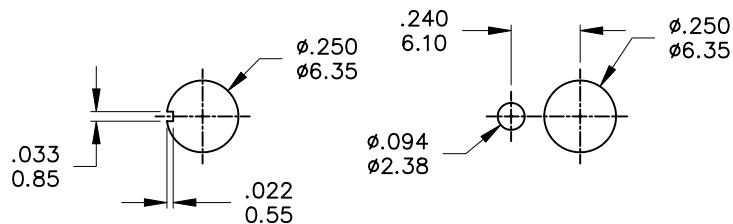


Model No.	POS.1	POS.2	POS.3
1MD1	ON	NONE	ON
Term. Comm.	2-3,5-6	N/A	2-1,5-4
SCHEMATIC			

SWITCH FUNCTION

	PART NO.	PART NAME	Q'TY
1	MNU-1M01A	1/4 INCH NUTS	2
2	MNU-1M02	LOCKING RING	1
3	MNU-1M03	LOCK WASHER	1

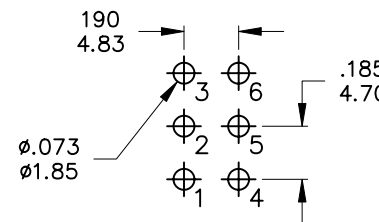
FILE NAME: HARDWARE-0002



Without locking ring.

With standard locking ring.

PANEL MOUNTING



P.C. MOUNTING

SPECIFICATIONS

MECHANICAL LIFE: 40,000 make-and-break cycles.
CONTACT RESISTANCE: 10mΩ max. initial @ 2-4VDC
 100mA for both silver and gold plated contacts.
INSULATION RESISTANCE: 1,000MΩ min.
DIELECTRIC STRENGTH: 1,000 Vrms min. @ sea level.
OPERATING TEMPERATURE: -30°C to 85°C.

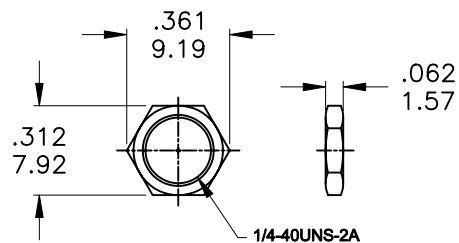
MATERIALS

CASE: Diallyl phthalate (DAP) (UL94v-0).
ACTUATOR: Brass, chrome plated.
BUSHING: Brass, nickel plated.
HOUSING: Stainless Steel.
TERMINAL/CONTACT: Brass, Silver or gold plated.
 RoHS: 2002/95/EC

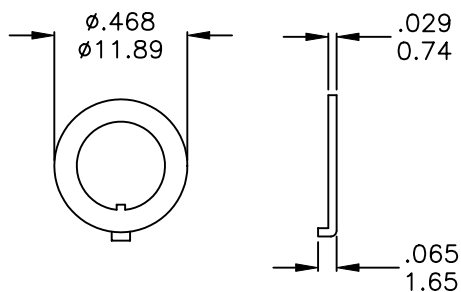


	CONTACT PLATING	TERMINAL PLATING	RATINGS
Q	Silver	Q = Silver	5 Amps @120 VAC or 28 VDC 2 Amps @250VAC
S		S = Silver, pure-tin	
C	Gold over Silver	C = Gold over silver	
K		K = Gold over silver, pure-tin	
R	Gold	R = Gold	0.4 Volt-Amps(VA) max. @20V max. (AC or DC)
G		G = Gold, pure-tin	

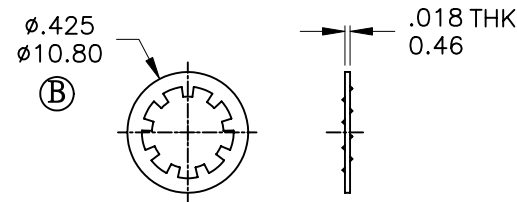
REV.	符號	原尺寸	修改後尺寸	變更日期	SCALE (比例): 3:2	TITLE 圖名	Miniature Toggle Switches	SIZE 圖紙	A4		
1	(A)				TOLERANCE (公差): 0.00 mm ± 0.25mm 0.0 mm ± 0.40mm ANGULAR : ± 5° FILE NAME : 1MDP1291	DWG NO. 圖號	1MD1T6B11M2QES-5	UNIT 單位	inch mm		
2	(B)					REV. 版本	A	DATE 日期	MAY - 05 - 2011	SHEET 張數	1 of 1
3	(C)					CHECKED BY 審核	RICHARD		DRAWN BY 製圖	IRENE	
4	(D)										
5	(E)										



MNU-1M01A



MNU-1M02



MNU-1M03

	PART NO.	PART NAME	QTY
1	MNU-1M01A	1/4 INCH NUTS	2
2	MNU-1M02	LOCKING RING	1
3	MNU-1M03	LOCKING WASHER	1



符號	原尺寸	修改後尺寸	變更日期	SCALE (比例): 3:2	TITLE 圖名	HARDWARE		SIZE 圖紙	A4			
1	(A)		版本變更	DEC-27-2007	DWG NO. 圖號	1/4 IN BUSHING PART		UNIT 單位	inch			
2	(B)	10.21(.402)	10.80(.425)	JUN-14-2010				REV. 版本	DATE 日期	DEC - 24 - 2007	SHEET 張數	1 of 1
3	(C)							CHECKED BY 審核	RICHARD		DRAWN BY 製圖	FION
4	(D)							FILE NAME : HARDWARE-0002				
5	(E)											
					TOLERANCE (公差): 0.00 mm ± 0.25mm 0.0 mm ± 0.40mm ANGULAR : ± 5°							