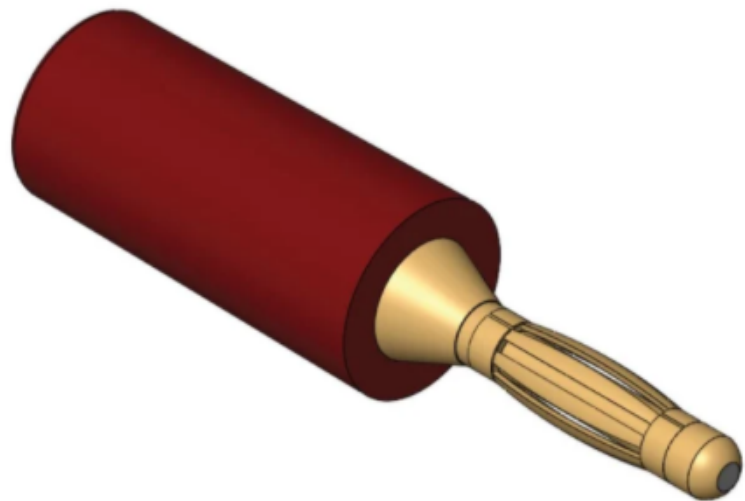


FEATURES

- 2 mm male banana plug
- Gold plated contact
- Keeps your cables and equipment safe
- Voltage rating: 30V AC to 60V DC
- Current rating: 8A
- PE plastic insulation material to ensure a strong and durable plug

RS PRO Banana Connectors

RS Stock No.: 2121211, 2121213
2121212, 2121214, 2121214,
2121217



RS Professionally Approved Products bring to you professional quality parts across all product categories. Our product range has been tested by engineers and provides a comparable quality to the leading brands without paying a premium price.

Product Description

Looking to make your own test leads, then RS PRO has the perfect addition in the 2 mm banana plug. This gold plated plug is the ideal solution for making test leads to your specification. Upon inspection, the plug connector offers high-grade plastic insulation with a centre contact made from gold-plated brass and soldering termination method. It accepts test lead cables with a 2 mm diameter and is suitable for any 2 mm insulated or non-insulated socket.

General Specifications

Body Material	Brass, Gold plated
Insulation Material	Poly propylene
Spring Material	Beryllium copper, Gold plated

Electrical Specifications

Voltage Rating	30Vac-60Vdc
Contact Resistance	$\leq 0.005\Omega$
Rated Current	8A

Note:

UNLESS OTHERWISE SPECIFIED DIMENSIONS ARE IN MILLIMETRES

LINEAR & RADIAL TOLERANCE: NO DECIMAL PLACES 0.2mm 1 DECIMAL PLACE 0.1mm 2 DECIMAL PLACES 0.05mm ANGULAR TOLERANCE: 1

THE FINISHED PRODUCT SHOULD BE CLEAN AND FREE FROM ALL LIQUIDS AND DEBRIS. SURFACES SHOULD BE OF UNIFORM APPEARANCE FREE FROM SHARP EDGES, BURRS AND CORROSION

