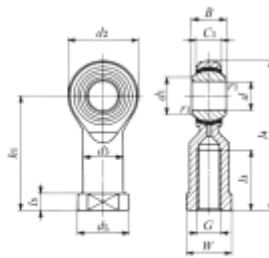


Datasheet

M16 x 2 Female Steel Rod End, 16mm Bore Size, 83mm Long , M16 x 2 Thread Size, Metric Thread Standard Female

RS Stock number 198-9011



PHS...EC

Identification number	Mass (Ref.) g	Boundary dimensions mm														Ball dia. mm (inch)	Dynamic load capacity C_d N	Static load capacity C_s N
		d	Thread G	d_2	C_1	B	d_1	l_4	h_1	l_3	l_5	W	d_3	d_L	r_{1s} mm			
210	16	M16x2	38	15	21	19.4	83	64	33	8	22	22	27	0.2	28.575 (1 1/8)	42 000	21 100	