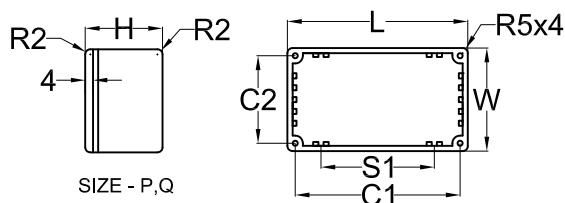
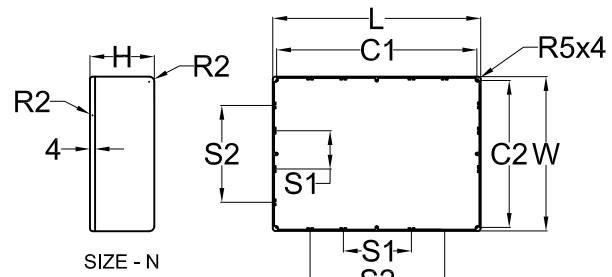
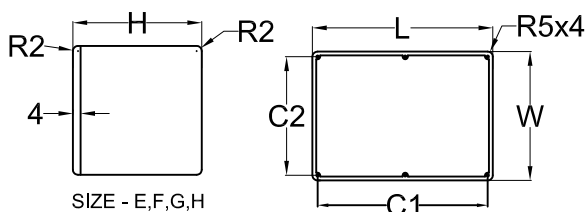
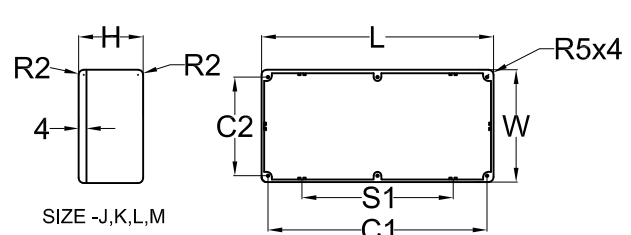
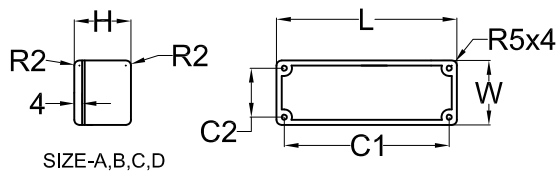




RS Stock No.517-4027
 RS Stock No.517-4033
 RS Stock No.517-4061
 RS Stock No.517-4049
 RS Stock No.517-4055
 RS Stock No.517-4083

Coated Black high temperature boxes (without seal ,coated black)



RS Stock NO.	Size NO.	L	W	H	C1	C2	S1	S2	Wall Thickness
5174027	A	89.5	35.4	30.7	79.3	25.3			1.5mm
5174033	B	114.9	64.0	30.7	104.5	54.2			1.5mm
5174061	C	115.1	90.1	55.5	104.4	79.6			1.5mm
5174049	D	114.8	64.1	55.5	104.6	54.2			2mm
5174055	E	172.4	121.3	55.4	160.4	109.3			2mm
5174083	K	139.5	101.9	77.1	128.7	90.7	64.8		2mm

1. Material of the base and lid :Aluminium alloy ,ADC12
2. Material of the screws: Stainless M3.5x9mm Supadrive countersunk head
3. Finish: Powder coating
 - 3-1. Thickness: 75~150 Micron inch (1.9um~3.8um)
 - 3-2. Color: Black RAL 9011
 - 3-3. Temperature resistance:
 - a. Max continuous working temp. 120 deg C.
 - b. Max short peak working temp. 150 deg C.
 - c. Melting temp. 180 deg C.
4. Taper 1.5° Per side to base