

## FEATURES

- Single set-point
- Zero point shift
- Probe failure setting, output status can be set to On, Off or pulse
- Sensor input offset setting
- Relay out for temperature control
- Compressor protection- delay timer
- CE Certified

# RS PRO On/Off Temperature Controller, 77 x 35mm, J Type Thermocouple Input, 230 V ac Supply

RS Stock No.: 124-1051



RS Professionally Approved Products bring to you professional quality parts across all product categories. Our product range has been tested by engineers and provides a comparable quality to the leading brands without paying a premium price.

## Product Description

From our RS PRO range, this high quality digital controller offers a J thermocouple input. Featuring built in On/Off or pulse output status, it can be used for heating or cooling control. This controller is easy to configure and install, with a large clear display giving good visibility alongside a compact design. Ideal for use in industrial applications

Options include:

[124-1051](#) - 230V ac, 1 output

[124-1052](#) - 24V ac/dc, 1 output

## General Specifications

<b>Input Type</b>	J Type Thermocouple
<b>Output Type</b>	Relay
<b>Number of Inputs</b>	1
<b>Number of Outputs</b>	1
<b>Termination Type</b>	Screw
<b>Housing Type</b>	Suitable for flush-panel mounting
<b>Enclosure Material</b>	Self-extinguishing plastics.
<b>Accuracy</b>	± 1% (for full scale) ± 1 Digit
<b>Display</b>	4 digits, 12.5mm, 7 segment red LED
<b>Application</b>	HVAC systems, Ovens, Incubators, Automotive, Storage solutions

## Electrical Specifications

<b>Supply Voltage</b>	230V AC
<b>Power Consumption</b>	Max. 3VA
<b>Line Resistance</b>	Max. 100ohm
<b>Data Retention</b>	EEPROM (minimum 10 years)
<b>Wiring</b>	Power connector: 2.5mm <sup>2</sup> screw-terminal, Signal connector: 1,5mm <sup>2</sup> screw-terminal connection.
<b>Frequency</b>	50/60Hz
<b>Electrical Contact Life</b>	300,000 operations at rated output
<b>Memory Back-up</b>	EEPROM

## Mechanical Specifications

<b>Mounting Type</b>	Panel Mount
<b>Panel Depth</b>	61mm
<b>Size</b>	77mm x 35mm
<b>Range</b>	-30°C to +400°C
<b>weight</b>	215g
<b>Panel cut</b>	71.5mm x 28.5mm

## Control Specifications

<b>Control Type</b>	Single-set point and alarm control
<b>Control Algorithm</b>	On-Off control
<b>A/D Converter</b>	12 bit
<b>Sampling Time</b>	100ms
<b>Hysteresis</b>	Adjustable between 0.1 and 20.0°C/F.

## Operation Environment Specifications

<b>Minimum Operating Temperature</b>	0°C
<b>Maximum Operating Temperature</b>	+50°C
<b>Max. Relative humidity</b>	80%
<b>Storage Temperature</b>	-25°C to 70°C
<b>Altitude</b>	Max. 2000m

## Protection Category

<b>IP Rating</b>	IP20, IP65
------------------	------------

## Approvals

<b>Compliance/Certifications</b>	CE, EN60529
----------------------------------	-------------



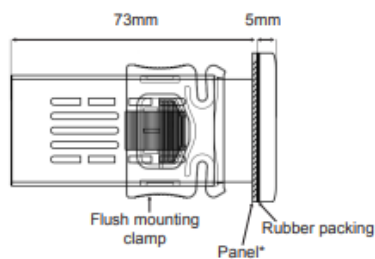
## Dimensions

Front Fascia 35 x 77mm.

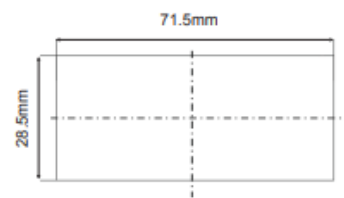
### Front



### Depth



### Panel cut-out



\*Panel thickness should be maximum 7mm.