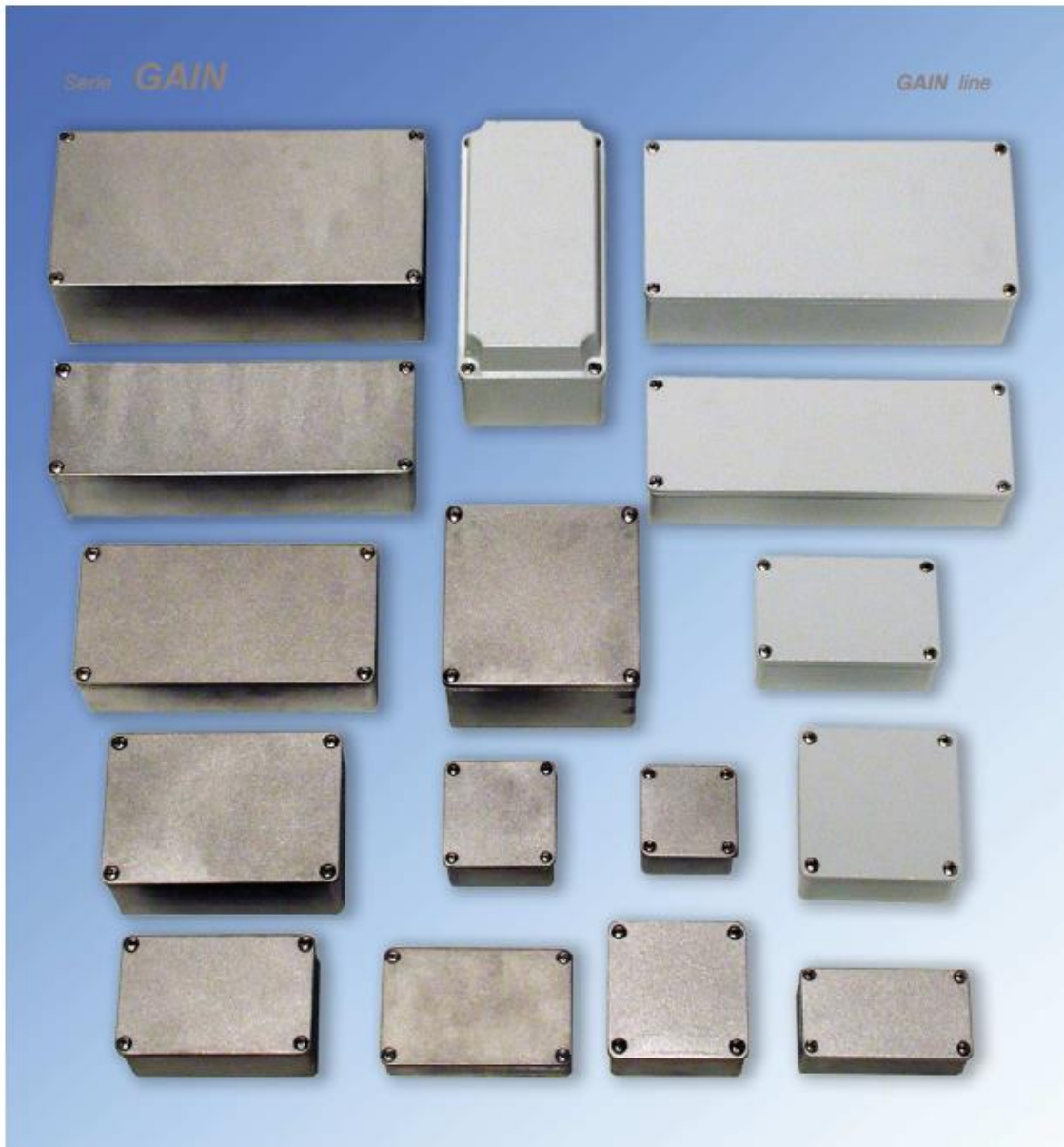


## Datasheet

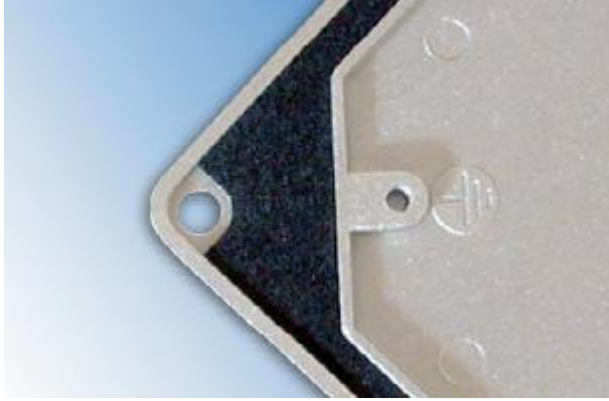
# **ELEG Aluminium Enclosure, IP65, 130 x 130 x 91mm**

RS Stock number 434-9898



Die-cast enclosures made of die-cast aluminum alloy (see general technical specifications) and them sandblasted or varnished with grey RAL 7035. Smooth walls more than 3 mm thick which therefore can be threaded.

On their bottom it is possible to fix sections type DIN 46277 (see EGO line fittings) or terminal boards. They are one or more grounding screws inside. Moreover, practical guides inside the enclosures can be used to insert printed circuits and boards. The enclosure can be fixed by means of holes outside the gasketed perimeter. Stainless steel cover screws (see fittings for unscrewable screws). Neoprene mouse gasketed (others available on request) IP 65 protection degree (complete enclosures), temperature of use  $-20 + 100$  °C.



Cover inside view. Neoprene closed cell foamed rubber gasketed.  
It is possible to use a screw and cord to connect the cover to the enclosure.



Inside the enclosures of GAIN type there are supports provided with holes for screwing the OMEGA DIN 46277 sections, supplied by request (see accessories of EGO series). One or more slides, depending on the dimensions of the enclosure, allow the insertion of printed circuit boards (as illustrated at pages 12 and 13)



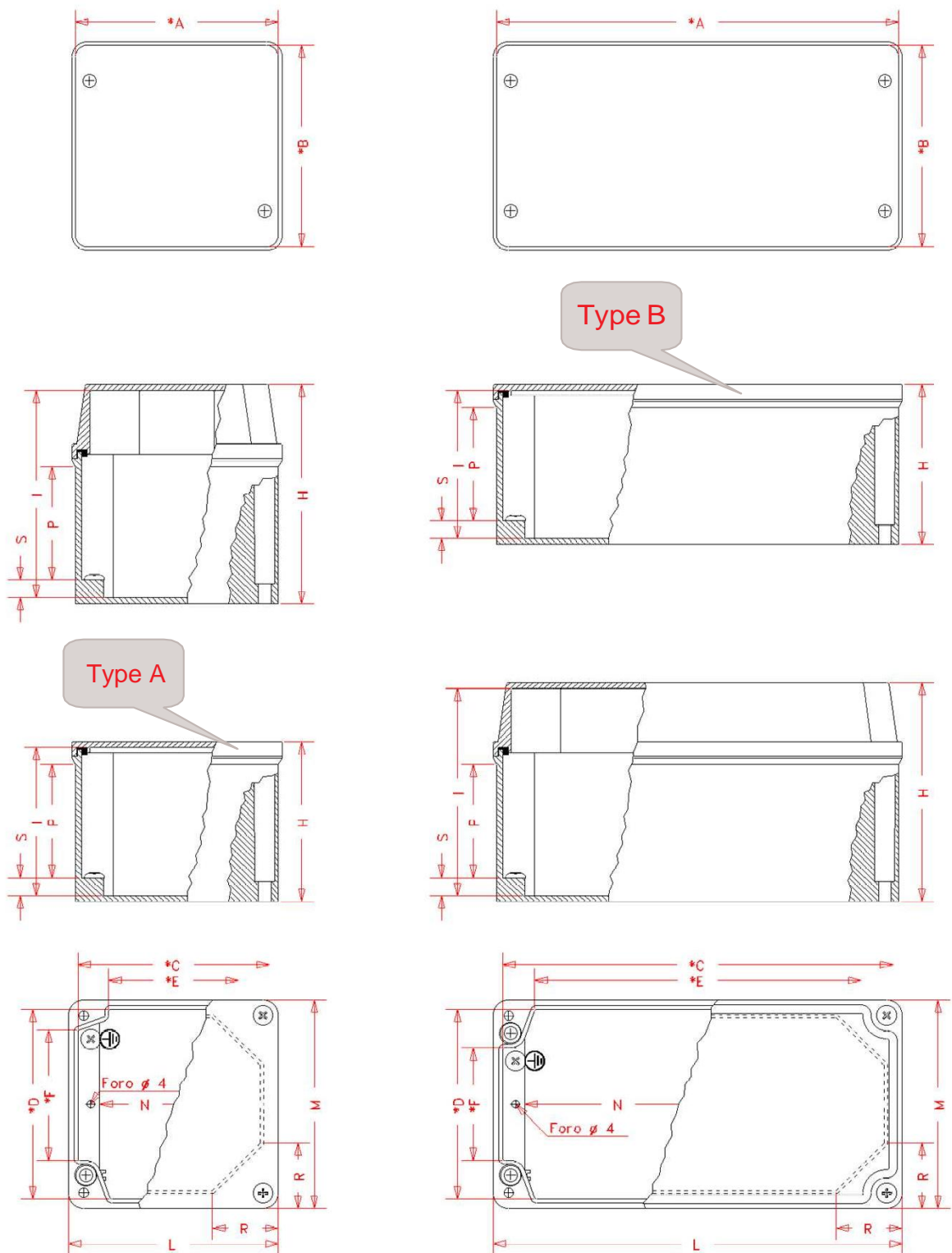
The enclosure can be fixed by means of normal screws inserted in through holes with screw head bearing on the bottom and outside the gasketed perimeter. The protection degree of the gasketed remains unchanged.



ENGLISH

\* Useful size

• Code	Type	* A	* B	H	* C	* D	* E	* F	I	L	M	N	P	R	S
282-1168	A	102	102	61	95	95	63	64,4	55	106	106	74	38	-	9
282-1180	A	102	102	81	95	95	63	64,4	75	106	106	74	58	-	9
282-1196	A	122	75	61	115	68	83	38	54,5	126	78,5	94	38	-	9
282-1203	A	122	75	75	115	68	83	38	68,5	126	78,5	94	52	-	9
434-9898	A	130	130	91	123	123	90	90	85	133	133	101	67,5	-	9
282-1219	B	202	102	61	195	95	164	56,5	55	206	106	174	37,5	-	9
282-1225	B	202	102	81	195	95	164	56,5	75	206	106	174	57,5	-	9
282-1247	A	252	87	61	245	80	213,5	50	54,5	256	91	224	38	-	9
282-1253	A	252	87	75	245	80	213,5	50	69	256	91	224	51,5	-	9
282-1269	B	265	130	91	258	123	227	84	85	268	133	234	67,5	-	9



Type A enclosure: flat cover and 2 fixing holes on the bottom.  
 Type B enclosure: flat cover and 4 fixing holes on the bottom.

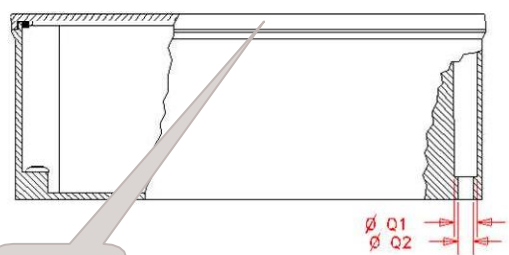
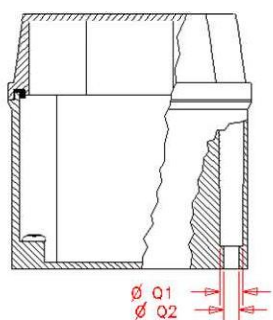
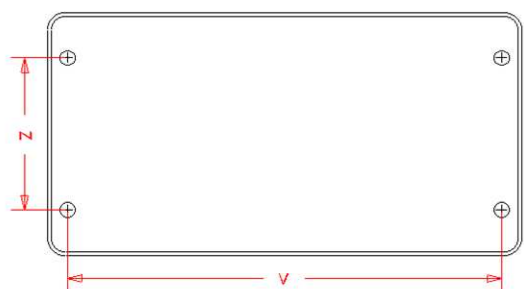
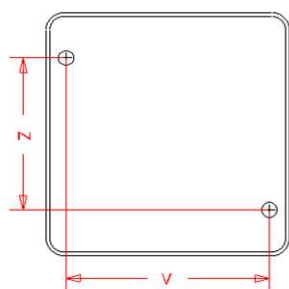




**ENGLISH**

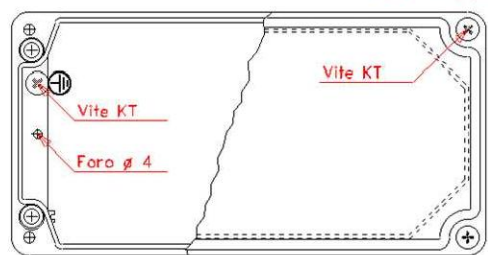
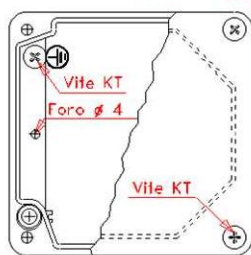
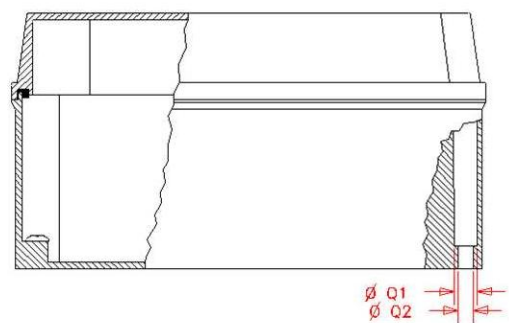
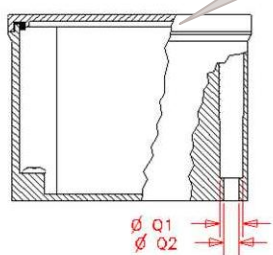
\* Useful size

Code •	Type	Q1	Q2	* T1	* U1	* T2	* U2	W1	W2	V	Z	No screws	KC	No screws	KT
282-1168	A	10	6	82,5	10	-	-	40	53,5	88	72	4	M5	1	M5
282-1180	A	10	6	82,5	10	-	-	60	73,5	88	72	4	M5	1	M5
282-1196	A	10	6	102,5	10	-	-	40	53,5	108	45	4	M5	1	M5
282-1203	A	10	6	102,5	10	-	-	54	67,5	108	45	4	M5	1	M5
434-9898	A	10	6	110	10	-	-	70	83,5	115	100	4	M5	1	M5
282-1219	B	10	6	171	10	95	16	40	53,5	188	72	4	M5	1	M5
282-1225	B	10	6	171	10	95	16	60	73,5	188	72	4	M5	1	M5
282-1247	A	10	6	232,5	10	80	16	40	53,5	238	57	4	M5	1	M5
282-1253	A	10	6	232,5	10	80	16	54	67,5	238	57	4	M5	1	M5
282-1269	B	10	6	232,5	10	122	16	70	83,5	248	97	4	M5	1	M5



Type B

Type A



Guides for printed circuit.

