

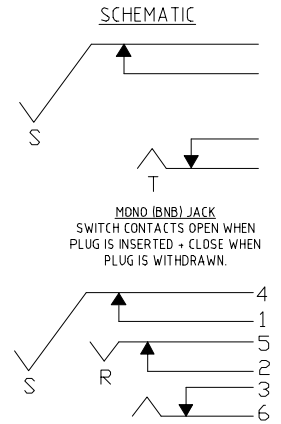
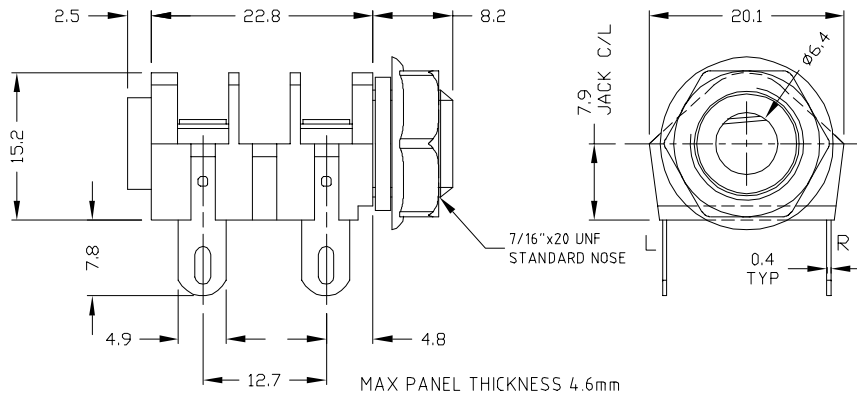


GOLD JACK SOCKETS

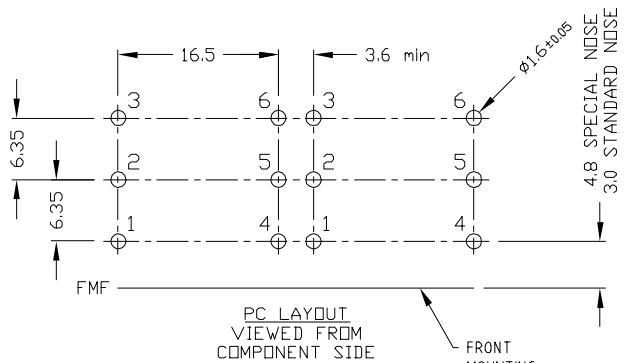
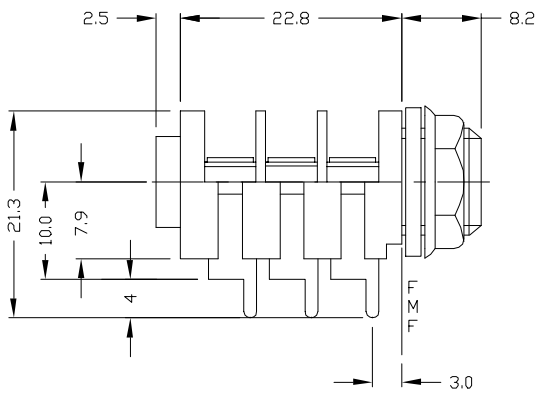
6.35mm JACK SOCKET



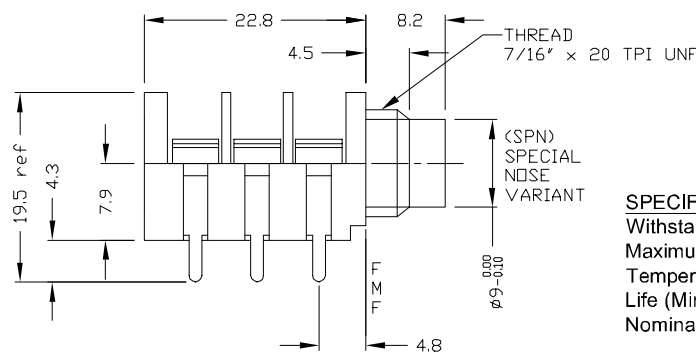
CL11607



CL12327



CL12345



SPECIFICATION

Withstand voltage:	2000V DC Min.
Maximum Current:	5A
Temperature Rating:	-10° C to +70° C
Life (Minimum):	10,000+ Operations
Nominal Contact Resistance:	<50mΩ

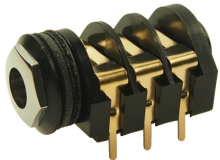
DESCRIPTION

- CL11607** - Jack Socket Mono S2/BNB Solder Tag
- CL12327** - Jack Socket Stereo S2/BBB PC Tag Type A.
- CL12345** - Jack Socket Stereo S2/BBB Special Nose PC Tag Type C. No nut or washers.

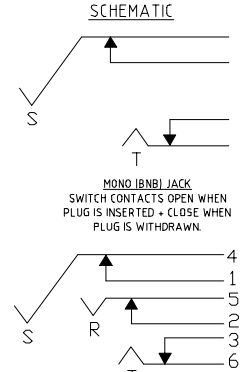
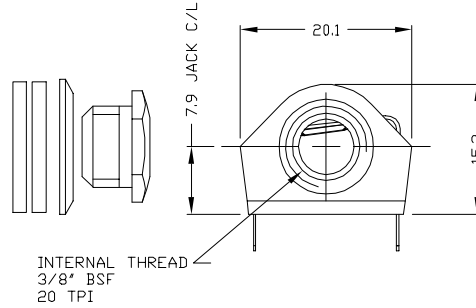
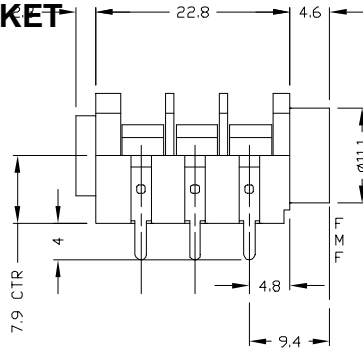


GOLD JACK SOCKETS

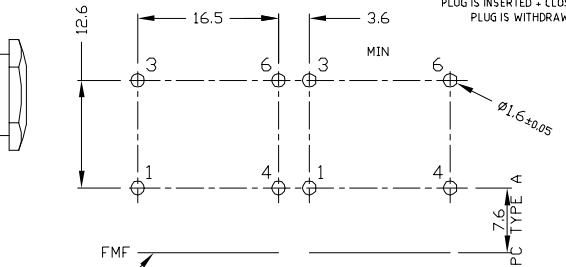
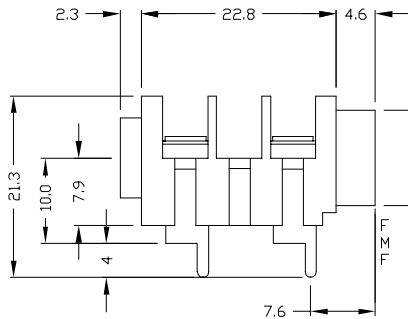
6.35mm JACK SOCKET



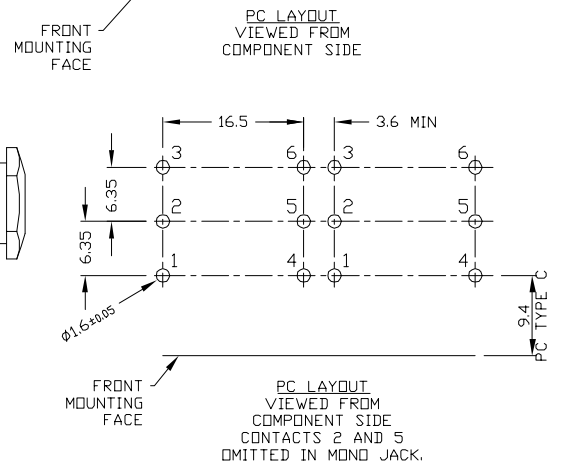
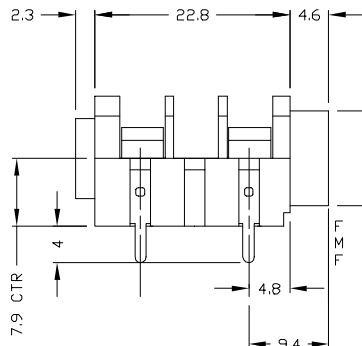
CL13345



CL1308G



CL13106G



DESCRIPTION

- CL13345** - Jack Socket Stereo S4/BBB PC tag type C
- CL1308G** - Jack Socket Mono S4/BNB PC tag type A
- CL13106G** - Jack Socket Mono S4/BNB PC tag type C

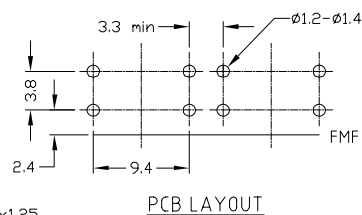
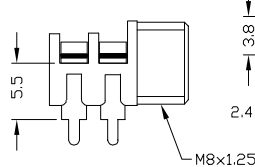
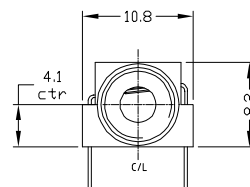
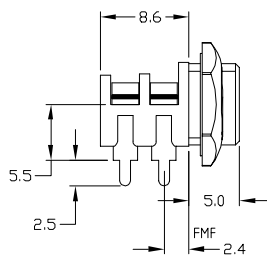
3.5mm JACK SOCKET



CL13845G



CL13843G



DESCRIPTION

- CL13845G** - 3.5mm Jack Socket S6G/BB with nut
- CL13843G** - 3.5mm Jack Socket S6G/BB without nut



GOLD JACK SOCKETS

JACK SOCKET ACCESSORIES



FCR14422 - EMI / RFI SCREEN FOR 6.35mm JACK SOCKETS



CL14218 - BLACK COMBINED NUT/BEZEL FOR S4 TYPE JACK SOCKET



CL14218GY - GREY COMBINED NUT/BEZEL FOR S4 TYPE JACK SOCKET



CL1396 - RECESS PLATE TO ALLOW FLUSH MOUNTING OF 6.35mm JACK SOCKETS

