



1

2

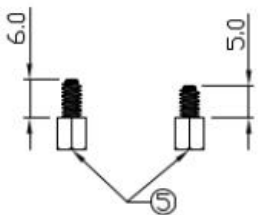
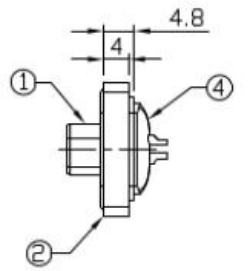
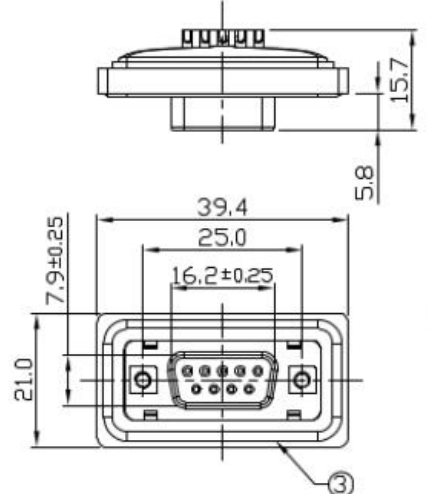
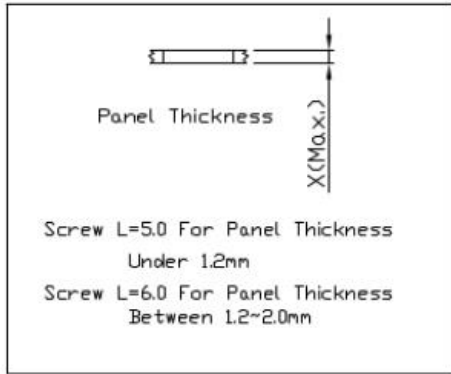
3

4

Notes: (Unless Otherwise Specified)

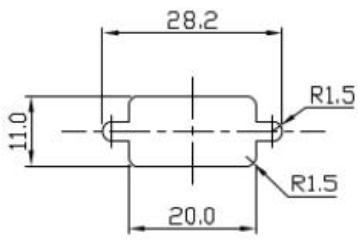
1. Waterproof Rate: IP68.
2. Recommend Panel Thickness: 0.8 to 2.0 mm.
3. Recommend Torque: 2.5~3.0 Kgf-cm.
- ⚠ 4. Mating Cap P/N: 125-7927
5. RoHS Compliant.

REV	ECN#	DESCRIPTION OF REVISION	DRAW BY DATE	CHECK BY DATE	APPROVE BY DATE
A0		Mass Production	Vicky 06/03/11	Lucas 06/03/11	Ray 06/03/11
A1	ECN-130728	Modify Title & Notes 4. ⚠	Joyce 08/02/13	Lucas 08/02/13	Ray 08/02/13



Screws on The Separate Bag

Mating Parts:
122-3040
122-3044



Recommend Panel Cut-Out

5	Machine Screw	#4-40, Copper Alloy Finish N Plated	4
4	Glue	Epoxy Color: Black	
3	O-Ring	Silicone Color: Red	1
2	Housing	Thermoplastic Color: Black	1
1	D-SUB 9P Female	Shell: Cold Roll Steel, Finish N Plated Contacts: Copper Alloy, Finish Au Plated Housing: Thermoplastic, Color Black	1
Item	Part Name	Material / Finish	Qty

TITLE						REV.		
D-SUB 9P Panel Female Solder						A1		
THIRD ANGLE PROJECTION	SIZE	SCALE	DRAW / DATE	CHECK / DATE	APPROVE / DATE	TOLERANCES	UNIT	SHEET
	B	1:1	Karen 09/04/09	Ray 09/04/09	Ray 09/04/09	X.X ± 0.5 X.XX ± 0.2	X.XXX ± 0.05 ANGLES ± 1°	mm 1/1

RS Stock No
122-3035

1

2

3

4