



ENGLISH

Datasheet

RS PRO 100A Crimp Contacts for RS PRO Heavy Duty Range

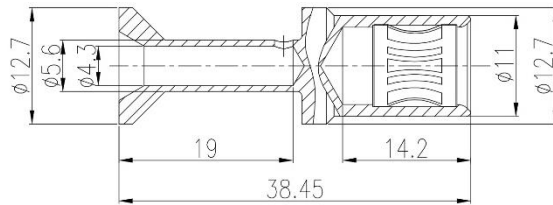


The RS PRO Heavy-Duty Connector series is a full range of heavy-duty inserts, housings, crimps and accessories. Crimps are available in 5A, 10A, 16A, 40A, 70A, 100A and 200A options which cover all but the most specialised of situations. All the crimp options are available with Silver plating however the lower current crimps are also offered with Gold plating for better conductivity at lower voltages and currents. The RS PRO Heavy-Duty connectors have been created for applications that are subjected to harsh environments or where high vibration can cause standard connectors to fail. This makes them ideal for food & beverage manufacturing, packaging machines, conveyor belt systems, railway, oil & gas processing and other industrial automation. The entire range of connectors are RoHS compliant and as with all RS PRO products, offer exceptional value for money.

Features & Benefits:

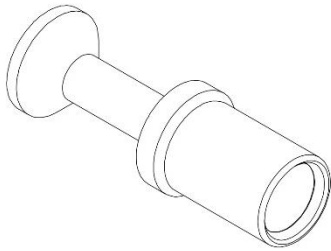
- **Silver Plated**
- **Male and Female Crimps sold Separately**
- **Fits RS PRO Heavy Duty Inserts**
 - **RS-HK Combination Inserts**
 - **RS-HM Modular Inserts**

Female Dimensional drawing and sizes

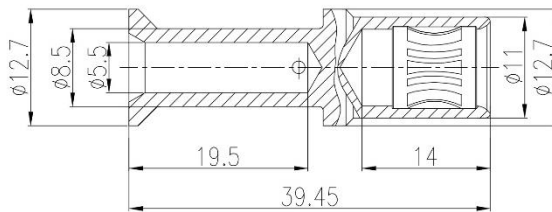


Technical specification:

- Material: copper alloy
- Surface: hard-silver plated
- Rated current: 100A
- Contact resistance: $\leq 0.3m\Omega$
- Wire gauge: $10mm^2$
- Max.insulation diameter: 14mm
- Stripping length: 19mm
- Mating cycles: ≥ 500
- For stranded fine wire acc.to: IEC 60228-5

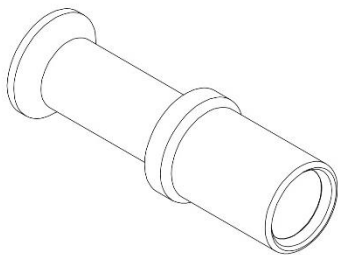


RS Stock Code	Wire Diameter
Silver-Plated	mm ²
208-4677	10



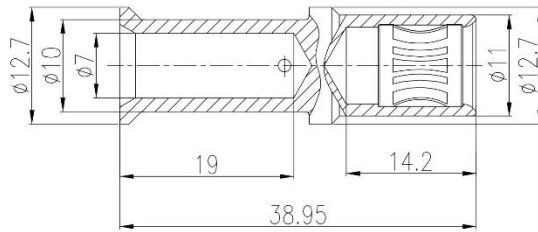
Technical specification:

- Material: copper alloy
- Surface: hard-silver plated
- Rated current: 100A
- Contact resistance: $\leq 0.3m\Omega$
- Wire gauge: $16mm^2$
- Max.insulation diameter: 14mm
- Stripping length: 19mm
- Mating cycles: ≥ 500
- For stranded fine wire acc.to: IEC 60228-5



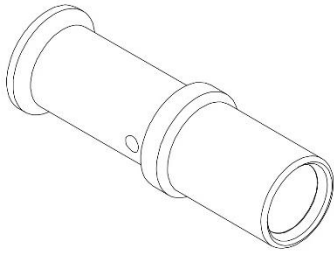
RS Stock Code	Wire Diameter
Silver-Plated	mm ²
208-4679	16

Female Dimensional drawing and sizes

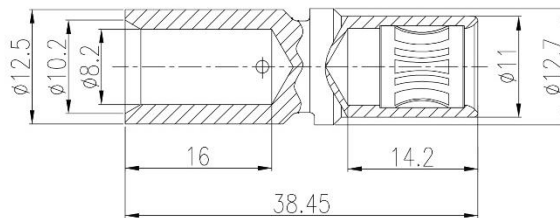


Technical specification:

- Material: copper alloy
- Surface: hard-silver plated
- Rated current: 100A
- Contact resistance: $\leq 0.3m\Omega$
- Wire gauge: $25mm^2$
- Max.insulation diameter: 14mm
- Stripping length: 19mm
- Mating cycles: ≥ 500
- For stranded fine wire acc.to: IEC 60228-5

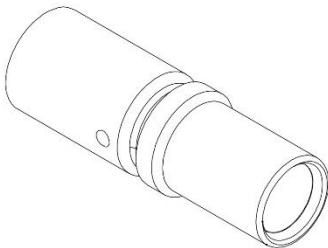


RS Stock Code	Wire Diameter
Silver-Plated	mm ²
208-4680	25



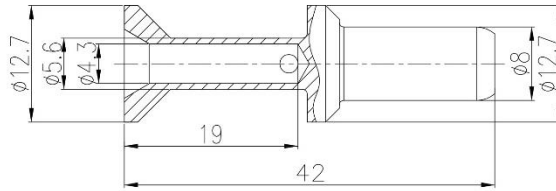
Technical specification:

- Material: copper alloy
- Surface: hard-silver plated
- Rated current: 100A
- Contact resistance: $\leq 0.3m\Omega$
- Wire gauge: $35mm^2$
- Max.insulation diameter: 14mm
- Stripping length: 16mm
- Mating cycles: ≥ 500
- For stranded fine wire acc.to: IEC 60228-5



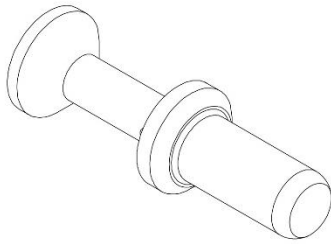
RS Stock Code	Wire Diameter
Silver-Plated	mm ²
208-4681	35

Male Dimensional drawing and sizes

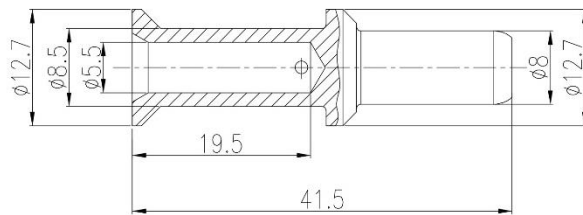


Technical specification:

- Material: copper alloy
- Surface: hard-silver plated
- Rated current: 100A
- Contact resistance: $\leq 0.3m\Omega$
- Wire gauge: 10mm²
- Max.insulation diameter: 14mm
- Stripping length: 19mm
- Mating cycles: ≥ 500
- For stranded fine wire acc.to: IEC 60228-5

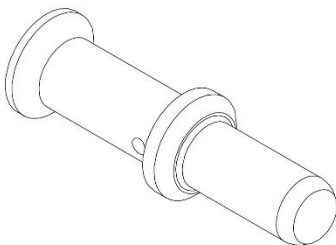


RS Stock Code	Wire Diameter
Silver-Plated	mm ²
208-4686	10



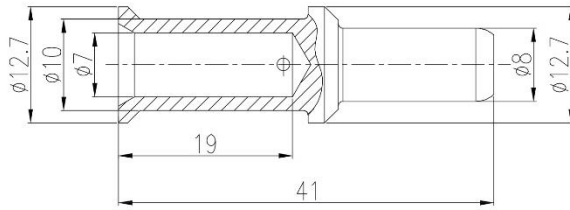
Technical specification:

- Material: copper alloy
- Surface: hard-silver plated
- Rated current: 100A
- Contact resistance: $\leq 0.3m\Omega$
- Wire gauge: 16mm²
- Max.insulation diameter: 14mm
- Stripping length: 19mm
- Mating cycles: ≥ 500
- For stranded fine wire acc.to: IEC 60228-5

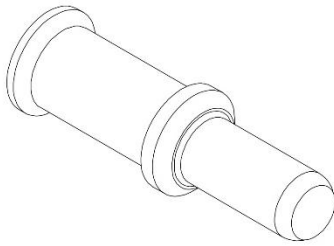


RS Stock Code	Wire Diameter
Silver-Plated	mm ²
208-4687	16

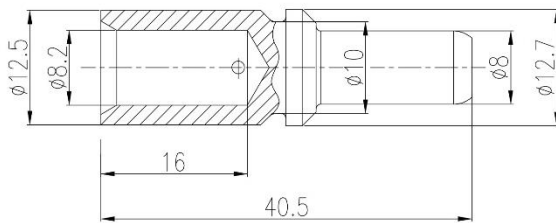
Male Dimensional drawing and sizes



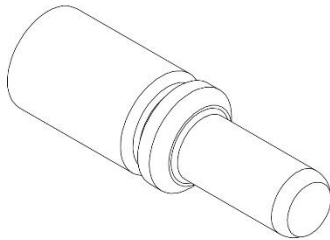
- Technical specification:
- Material: copper alloy
 - Surface: hard-silver plated
 - Rated current: 100A
 - Contact resistance: $\leq 0.3m\Omega$
 - Wire gauge: 25mm²
 - Max.insulation diameter: 14mm
 - Stripping length: 19mm
 - Mating cycles: ≥ 500
 - For stranded fine wire acc.to: IEC 60228-5



RS Stock Code	Wire Diameter
Silver-Plated	mm ²
208-4688	25



- Technical specification:
- Material: copper alloy
 - Surface: hard-silver plated
 - Rated current: 100A
 - Contact resistance: $\leq 0.3m\Omega$
 - Wire gauge: 35mm²
 - Max.insulation diameter: 14mm
 - Stripping length: 16mm
 - Mating cycles: ≥ 500
 - For stranded fine wire acc.to: IEC 60228-5



RS Stock Code	Wire Diameter
Silver-Plated	mm ²
208-4689	35