

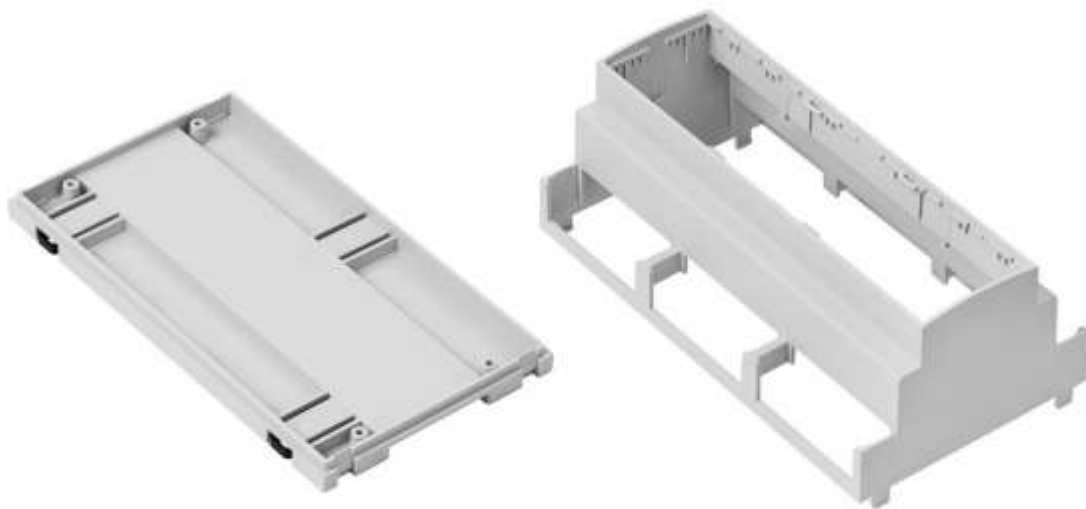


Datasheet

RS PRO Modular Enclosure for DIN rail

Stock number: 2069060

EN

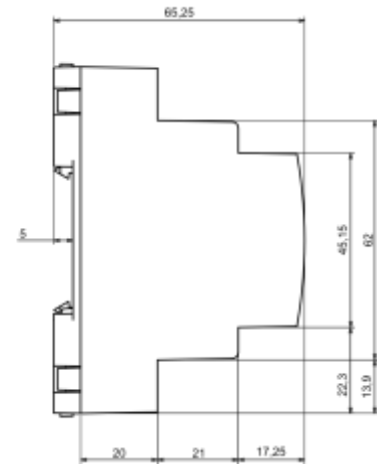
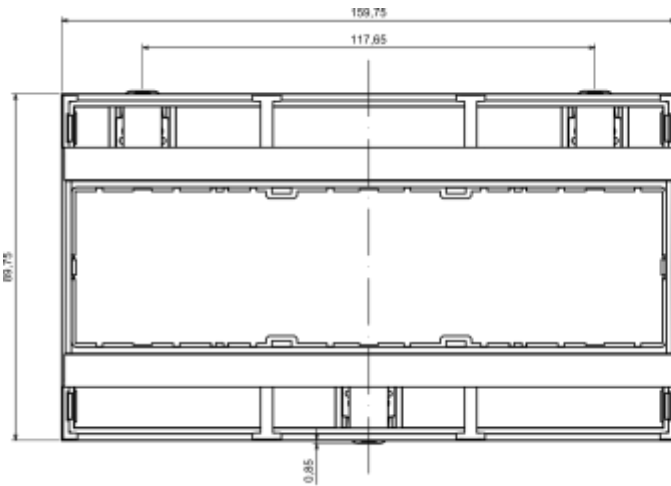


Product Details

Made of self extinguishing ABS V0, customozable enclosure by three diffrent slot masks and filters, ribbs inside give a flexible solution for PCB instalation. Mounted on TS35 rail by three latches thanks to which there are no technological holes between the PCB plate and the rail. The casing is assembled without screw.

Features and Benefits

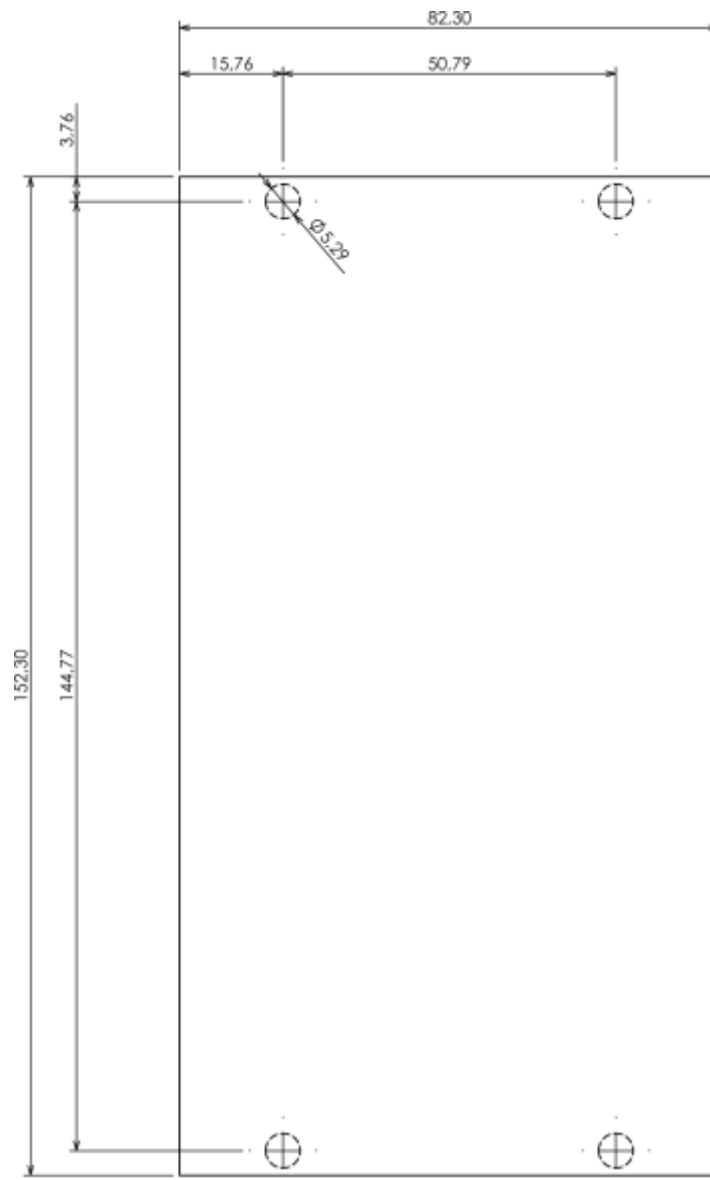
- Made of self extinguishing ABS
- Available in light gray color
- Supplied with three latches
- Different slot masks and filters
- Assembled without screws



Category	Modular Enclosures for DIN rail
Type	Full
Material	ABS V0
Variant	Without gasket
Height	65.3 mm
Width	89.8 mm
Length	159.8 mm
Color	Lightgray (J)
Standards Met	RoHS Compliant
Accessories	Black hook: 3.0 pcs
Optional accessories	Slot mask - full ZD3TC: 8.0 pcs Slot mask for sockets ZD3TCS: 8.0 pcs Slot mask - universal ZD3TCU: 8.0 pcs Slot mask for end plugs ZD3TC 5,08: 8.0 pcs Filter ZDFJ1009 ABS V0 (Lightgray): 1.0 pcs Filter ZDFcz1009 ABS (Red): 1.0 pcs Filter ZDFp1009 ABS (Transparent): 1.0 pcs
Certificate number	



Max PCB size



Dashed line shows outline of the mounting boss under PCB board
Recommended mounting holes diameter $\varnothing 3.5$ mm