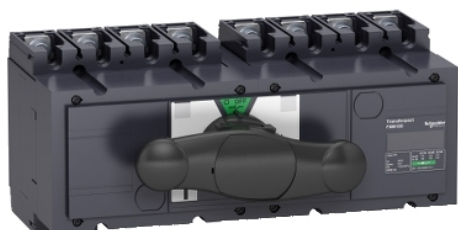


31145

complete manual source changeover
assembly, FXM160, Compact INS250-160
switch disconnectors, 160 A, 4 poles



Main

Range of product	INS250
Range	ComPact
Device short name	INS250
Product or component type	Changeover switch
Device application	Change source of supply
Range compatibility	Compact INS INS250 switch disconnector
Poles description	4P
Network type	DC AC
Network frequency	50/60 Hz
Mounting mode	Fixed
Upside connection	Front
Downside connection	Front
Suitability for isolation	Yes
Contact position indicator	Yes
[Icm] rated short-circuit making capacity	30 kA switch-disconnector alone 690 V AC at 50/60 Hz 330 kA with upstream protection circuit breaker 690 V AC at 50/60 Hz

Complementary

Transfer switch class	PC
Number of contact position	3
Control type	Direct front rotary handle
Mounting support	Plate Rail
Locking options description	Padlocking in OFF position
[Ie] rated operational current	AC-22A: 160 A AC 50/60 Hz 220/240 V AC-22A: 160 A AC 50/60 Hz 380/415 V AC-22A: 160 A AC 50/60 Hz 440/480 V AC-22A: 160 A AC 50/60 Hz 480 V NEMA AC-22A: 160 A AC 50/60 Hz 500/525 V AC-22A: 160 A AC 50/60 Hz 660/690 V AC-23A: 160 A AC 50/60 Hz 220/240 V AC-23A: 160 A AC 50/60 Hz 380/415 V AC-23A: 160 A AC 50/60 Hz 440/480 V AC-23A: 160 A AC 50/60 Hz 480 V NEMA AC-23A: 160 A AC 50/60 Hz 500/525 V AC-23A: 160 A AC 50/60 Hz 660/690 V DC-22A: 160 A DC 125 V 2 poles in series DC-23A: 160 A DC 125 V 2 poles in series DC-22A: 160 A DC 250 V 4 poles in series DC-23A: 160 A DC 250 V 4 poles in series
[Ith] conventional free air thermal current	160 A at 60 °C
Rated duty	Uninterrupted
Intermittent duty class	Class 120 - 60 %
[Ui] rated insulation voltage	750 V AC 50/60 Hz
[Uimp] rated impulse withstand voltage	8 kV

The information provided in this documentation contains general descriptions and/or technical characteristics of the products contained herein. This documentation is not intended as a substitute for and is not to be used for determining suitability or reliability of these products for specific user applications. It is the duty of any such user or integrator to perform the appropriate and complete risk analysis, evaluation and testing of the products with respect to the relevant specific application or use thereof. Neither Schneider Electric Industries SAS nor any of its affiliates or subsidiaries shall be responsible or liable for misuse of the information contained herein.

[Ue] rated operational voltage	690 V AC 50/60 Hz conforming to IEC 60947-3 750 V AC 50/60 Hz conforming to IEC 60947-3 750 V DC conforming to IEC 60947-3 250 V DC conforming to IEC 60947-3
Mechanical interlocking	With mechanical interlocking
Mechanical durability	15000 cycles
Electrical durability	AC-22A: 1500 cycles 440 V AC 50/60 Hz AC-22A: 1500 cycles 500 V AC 50/60 Hz AC-22A: 1500 cycles 690 V AC 50/60 Hz AC-23A: 1500 cycles 440 V AC 50/60 Hz AC-23A: 1500 cycles 500 V AC 50/60 Hz AC-23A: 1500 cycles 690 V AC 50/60 Hz DC-22A: 1500 cycles 125 V DC 2 poles in series DC-23A: 1500 cycles 125 V DC 2 poles in series DC-22A: 1500 cycles 250 V DC 4 poles in series DC-23A: 1500 cycles 250 V DC 4 poles in series
Connection pitch	45 mm
[Icw] rated short-time withstand current	1.8 kA during 30 s conforming to IEC 60947-3 2.2 kA during 20 s conforming to IEC 60947-3 4.9 kA during 3 s conforming to IEC 60947-3 8.5 kA during 1 s conforming to IEC 60947-3
Height	136 mm
Width	295 mm
Depth	131 mm
Net weight	6.4 kg





Environment

Standards	IEC 60947-1 IEC 60947-3
Product certifications	CCC KEMA-KEUR
Electrical shock protection class	Class II
IP degree of protection	IP40 conforming to IEC 60947-3
Pollution degree	3
Ambient air temperature for operation	-25...70 °C
Ambient air temperature for storage	-50...85 °C

Packing Units

Unit Type of Package 1	PCE
Number of Units in Package 1	1
Package 1 Weight	6.754 kg
Package 1 Height	15.4 cm
Package 1 width	18.2 cm
Package 1 Length	40 cm
Unit Type of Package 2	S04
Number of Units in Package 2	2
Package 2 Weight	14.274 kg
Package 2 Height	30 cm
Package 2 width	40 cm
Package 2 Length	60 cm

Offer Sustainability

Sustainable offer status	Green Premium product
REACH Regulation	 REACH Declaration
EU RoHS Directive	Compliant  EU RoHS Declaration
Mercury free	Yes
RoHS exemption information	 Yes
China RoHS Regulation	 China RoHS Declaration

Environmental Disclosure	Product Environmental Profile
Circularity Profile	End Of Life Information
WEEE	The product must be disposed on European Union markets following specific waste collection and never end up in rubbish bins

Contractual warranty

Warranty	18 months
----------	-----------
