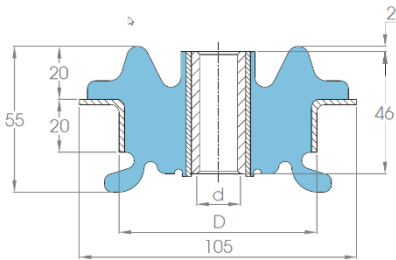




ENGLISH

CAB Mounts

The CAB mounts are designed for suspending cabs in heavy machinery like tractors, earthmoving equipment and other off-road vehicles and provide a compact failsafe design when used with stop and rebound washers.



H = Height
D = Diameter



KMC10546M22

RS Code	Item Code	Description	Metal	D (mm)	H (mm)	Max Load (kg)	Deflection (mm)
1712664	KMC7574M20-1	Mobile Mount 72.3x72.5 M20 45 ShA NR	Mild Steel	72.30	72.5	290	6.4
1712665	KMC7574M20-1.55	Mobile Mount 72.3x72.5 M20 55 ShA NR	Mild Steel	72.30	72.5	464	10.2
1712666	KMC7574-1	Mobile Mount 75x74 M16 Clearance 45 ShA NR	Mild Steel	75	74	290	6.4
1712667	KMC7574-0	Mobile Mount 75x74 M16 Clearance 35 ShA	Mild Steel	75	74	193.4	4.2
1712668	KMC7574-3	Mobile Mount 75x74 M16 Clearance 70 ShA NR	Mild Steel	75	74	852.6	18.8
1712669	KMC10546M22-2	Mobile Mount 105x46 M22 60 ShA NR	Mild Steel	105	46	500	5