

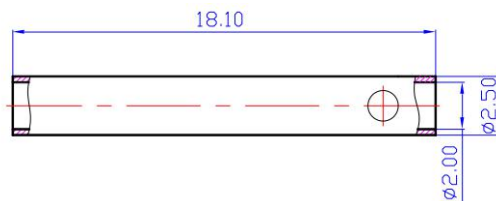


Datasheet

RS PRO GC2010 2.0mm Banana Female connector

Stock number: 180-5401

EN



Section

Material & Parameter

Recommend USE: Motor/controller
Metal Material: Brass Gold Plated
Use Times: 2000 TIMES
Cable Spec: 18AWG

Contact Resistance: 1.5mΩ
Rated Current: 15A
Momentary Current: 30A

Remark: Data sheet will change according with the test background