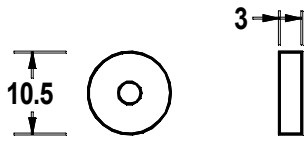
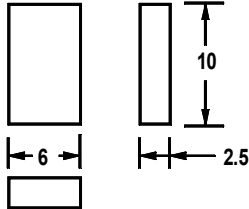


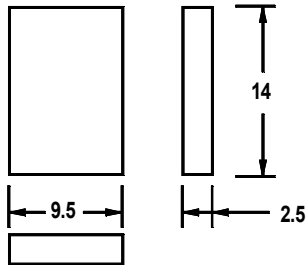
# SPARE CARBON BRUSHES



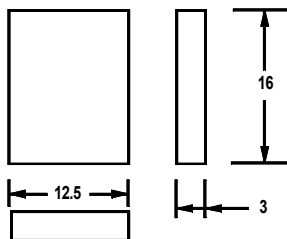
Brush Type	RS Part no.	Used with	RS Part no.
WCVBR 0.7	8902888	WCV 0.7 F-1R	8902765
		WCV 0.7 E-1R	8902799



Brush Type	RS Part no.	Used with	RS Part no.
WCVBE 1/1.5/2/3	8902897	WCV 2 F-1	8902774
		WCV 2 E-1	8902793
		WCV 3 F-1	8902777
		WCV 3 E-1	8902803
		WCV 1.5 X-1	8902822
		WCV 2 X-1	8902831
		WCV 3 X-1	8902834
		WCV 2 F-3	8902844
		WCV 2 E-3	8902856



Brush Type	RS Part no.	Used with	RS Part no.
WCVB 4/5/6/8/10	8902890	WCV 5 F-1	8902771
		WCV 5 E-1	8902806
		WCV 8 F-1	8902780
		WCV 8 E-1	8902800
		WCV 10 F-1	8902783
		WCV 10 E-1	8902819
		WCV 4 X-1	8902838
		WCV 6 X-1	8902847
		WCV 8 X-1	8902840
		WCSE 3	8902862
		WCSE 5	8902866
		WCSE 10	8902875
		WCV 10 E-3	8902850
		WCCTV 5	8902878
		WCCTV 10	8902872
		WCSE 5SC	8902881
		WCCTV 10SC	8902884



Brush Type	RS Part no.	Used with	RS Part no.
WCVB 15/20	8902894	WCV 15 F-1	8902787
		WCV 15 E-1	8902812
		WCV 20 F-1	8902796
		WCV 20 E-1	8902816
		WCV 20 E-3	8902869

