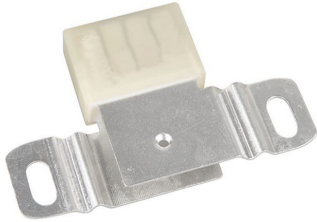


**RoHS  
Compliant**



## Description

Alloy Thermal-Link / Alloy Thermal Cutoff (MPATCO) is defined as a non-resettable protective device functioning one time only. It is widely used in electrical equipment. Normally, thermal element is jointed to the two electrode leads. Under abnormal conditions, when the temp. reaches to the fusing temp. of MPDC-ATCO, the thermal element melts and quickly retracts to the two electrode lead ends with the aid of the flux resin and disconnects the circuit completely.

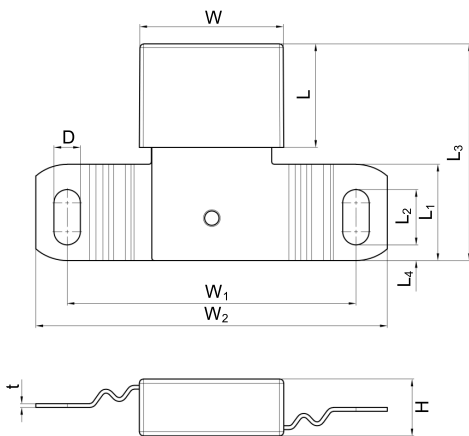
## Applications

- EV Battery Modules
- Automatic Electronics

## Features

- Non-Resettable
- High Accuracy of Functioning Temp.

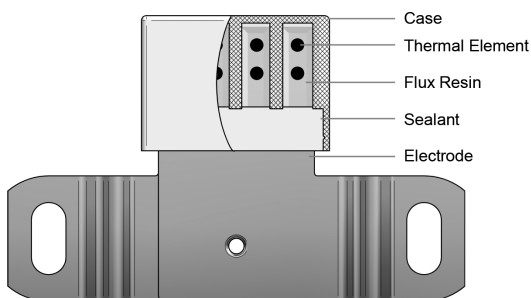
## Dimensions



## Customization

- Rated Functioning Temp.
- Shape of Electrode Leads

## Structure Diagrams



L	L1	L2	L3	L4	W	W1	W2	D	H	t
21 ±0.5	10 ±0.5	11.5 ±0.5	45.5 ±2	3.25 ±0.5	30 ±0.5	60 ±2	73 ±2	5.5 ±0.2	11.8 ±0.5	0.8 ±0.05

## Glossary

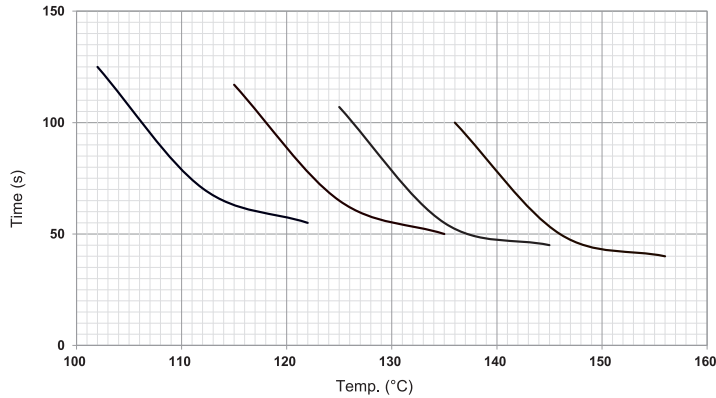
Item	Description
<b>TCO</b>	<b>Thermal-Link</b> A non-resettable device incorporating a THERMAL ELEMENT which will open a circuit once only when exposed for a sufficient length of time to a temperature in excess of that for which it has been designed.
<b>ATCO</b>	<b>Alloy Thermal-Link</b> Alloy type Thermal-Link, Alloy is thermal element.
<b>DC-ATCO</b>	<b>DC-Alloy Thermal-Link</b> Direct Current Alloy Thermal-Link.
<b>T<sub>f</sub></b>	<b>Rated Functioning Temp.</b> The temperature of the Thermal-Link which causes it to change the state of conductivity with a detection current up to 10 mA as the only load. Tolerance: T <sub>f</sub> 0 / -10°C (GB 9816, EN 60691, K60691). Tolerance: T <sub>f</sub> ± 7°C (J60691).
<b>Fusing Temp.</b>	The temperature of the Thermal-Link which causes it to change its state of conductivity is measured with silicone oil bath in which the temperature is increased at the rate of 0.5 °C to 1 °C / minute, with a detection current up to 10 mA as the only load.
<b>T<sub>h</sub></b>	<b>Holding Temp.</b> The Maximum temperature at which a Thermal-Link will not change its state of conductivity when conducting rated current for 168 hours.
<b>T<sub>m</sub></b>	<b>Maximum Temp. Limit</b> The temperature of the Thermal-Link stated by the manufacturer, up to which the mechanical and electrical properties of the Thermal-Link having changed its state of conductivity, will not be impaired for a given time.
<b>I<sub>min</sub></b>	<b>Minimum Breaking Current</b> The minimum current that Fuse requires after the Alloy of Thermal-Link opens in the circuit.
<b>I<sub>r</sub></b>	<b>Rated Current</b> The current used to classify a Thermal-Link, which is the maximum current that Thermal-Link allows to carry and is able to cut off the circuit safely.
<b>U<sub>r</sub></b>	<b>Rated Voltage</b> The voltage used to classify a Thermal-Link, which is the maximum voltage that Thermal-link allows to carry and is able to cut off the circuit safely.

## Specification

Model	T <sub>f</sub>	Fusing Temp.	T <sub>h</sub>	T <sub>m</sub>	I <sub>r</sub>	U <sub>r</sub>
	(°C)	(°C)	(°C)	(°C)	(A)	(V)
MPATCO-TS102-RHZ	102	98 ±3	57	180	100	DC 100
MPATCO-TS115-RHZ	115	111 ±3	70			
MPATCO-TS125-RHZ	125	121 ±3	80			
MPATCO-TS136-RHZ	136	132 ±3	91			

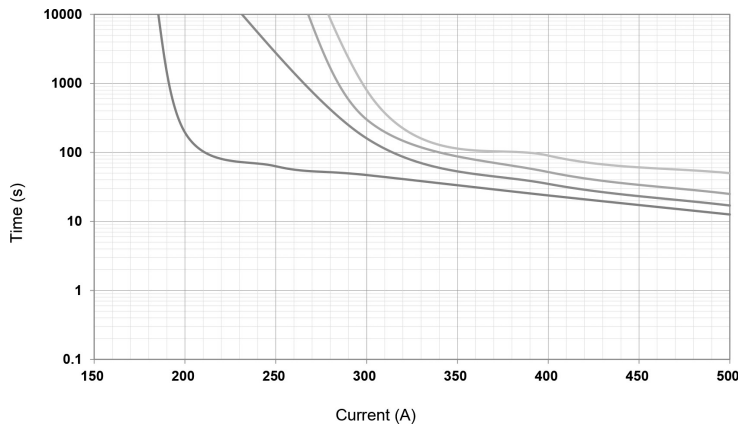
## Product Current-Time Curve

The functioning temperature time curve of Alloy Thermal-Link in different Temp. oil bath.



## Product Current-Time Curve

This is an illustrated curve, describing the opening time at Multi-times rated current in the condition of the room Temp. 25°C.



## Part Number Table

Description	Part Number
Thermal Link Fuse, 100A, 100V DC, 102°C	MPATCO-TS102-RHZ
Thermal Link Fuse, 100A, 100V DC, 115°C	MPATCO-TS115-RHZ
Thermal Link Fuse, 100A, 100V DC, 125°C	MPATCO-TS125-RHZ
Thermal Link Fuse, 100A, 100V DC, 136°C	MPATCO-TS136-RHZ

**Important Notice :** This data sheet and its contents (the "Information") belong to the members of the AVNET group of companies (the "Group") or are licensed to it. No licence is granted for the use of it other than for information purposes in connection with the products to which it relates. No licence of any intellectual property rights is granted. The Information is subject to change without notice and replaces all data sheets previously supplied. The Information supplied is believed to be accurate but the Group assumes no responsibility for its accuracy or completeness, any error in or omission from it or for any use made of it. Users of this data sheet should check for themselves the Information and the suitability of the products for their purpose and not make any assumptions based on information included or omitted. Liability for loss or damage resulting from any reliance on the Information or use of it (including liability resulting from negligence or where the Group was aware of the possibility of such loss or damage arising) is excluded. This will not operate to limit or restrict the Group's liability for death or personal injury resulting from its negligence. Multicomp Pro is the registered trademark of Premier Farnell Limited 2019.