



APPLICATION GUIDE  
Dimmer

Thank you for choosing **Schneider Electric** Affle Plus series products. To ensure proper application of our product, please read through the following information before installation and use.

This application guide applies to the following products.

Cat. No.	Description
A3G31BDC	250W 220V 1 Gang Dimmer

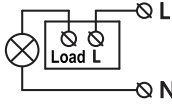
SPECIFICATIONS

Rated load	: Incandescent lamp below 250W
Voltage	: 220-240V~
Mounting centre	: 60.3mm
Compliance	: IEC 60669-2-1

IMPORTANT NOTE

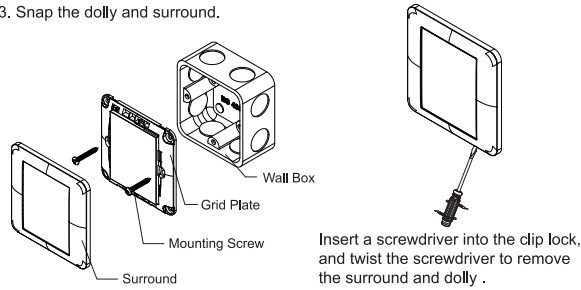
- The products must be installed by qualified electricians.
- The wallbox depth should be ≥35mm .
- Please check your local wiring regulations before installation.
- Safekeeping the surround to prevent damage during product installation.
- Turn off the power supply when you clean the product. Use a soft, slightly-moistened cloth or tissue paper to wipe off the dust and dirt on the surface. Clean with much diluted detergent if necessary but avoid using corrosive chemicals.
- Install an IEC60898-1 compliant 250 Va.c. 6 A type C MCB as overload protection
- Dimming performance with different dimmable LED lamps could be various. Flickering may happen when dimming at low light intensity.

WIRING DIAGRAMS



MOUNTING INSTRUCTION

- Connect the wires to the terminals (recommend to leave 10-12mm bare metal wire) and tighten the terminal screws.
- Screw the grid plate onto the wall box.
- Snap the dolly and surround.



Insert a screwdriver into the clip lock, and twist the screwdriver to remove the surround and dolly .



應用指引  
光暗掣

感謝閣下選用 **Schneider Electric** 施耐德電氣Affle Plus系列產品。在安裝及使用本產品前，請仔細閱讀內文指示。

此手冊適用於以下產品型號：

型號	摘要
A3G31BDC	250W 單位光暗掣

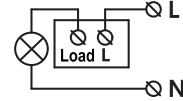
產品規格

額定負載	: 250W 以下的白炽灯
工作電壓	: 220-240V~
安裝中心距	: 60.3mm
安全標準	: IEC 60669-2-1

注意事項

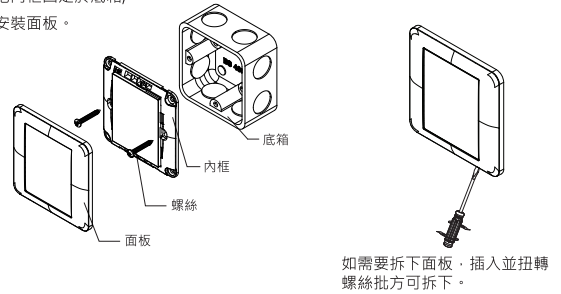
- 產品安裝須由符合資格的電工完成
- 請用深度35mm以上的底箱
- 安裝前請查核是否抵觸當地之有關布線規例
- 產品安裝期間，請妥善放置與保管面蓋，以防壓傷損壞
- 清潔時，切記先關上電源，再用輕微濕潤的軟性布料或紙巾抹拭表面的塵埃或穢物，必要時可用極為稀釋的清潔劑，但切忌使用帶有腐蝕性的化學溶液(如：鹼性或酸性洗滌、稀釋劑、汽油、殺蟲劑等)，否則，可能會導致本產品表面開裂或其他故障
- 請選用符合IEC60898-1 標準要求的250Va.c 6A type C MCB(超載保護)並安裝於產品之前
- 當光暗掣對應不同型號可調光LED,有可能在光度調低時出現閃爍

接線圖



安裝指南

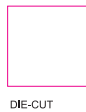
- 把電線插入接線端子(建議剝線長度10-12mm)，然後鎖緊螺絲以固定位置；
- 把內框固定於底箱；
- 安裝面板。



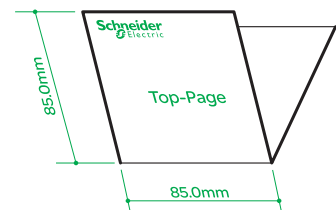
如需要拆下面板，插入並扭轉螺絲批方可拆下。

User Manual  
中文简体 · 中国大陆地区适用

- > Note:
- 1/ 70g high quality uncoated Book-Paper (white).
  - 2/ Double side printing.



> Folding / Appearance & Size :



> ARTWORK :  
File Size = A3



*****		Initial Release	ZXZ	OO
DECN/ECN/TCAN	DESCRIPTION		DRN	REV
NUMBER :	<b>MBA BS Dimmer</b>	Revision:	Sheet:	
		<b>00</b>	<b>1/1</b>	