

## FEATURES

- Ideal for general purpose use. Contacts are polarised to ensure correct connection
- Standard connector size
- Easy 'jab-in' connection for rapid termination, just push wire in and tighten screw
- IEC colour coded
- The International Electrotechnical Commission (IEC) is an international standards organisation that prepares and publishes international standards.

# RS PRO Standard Quick Wire Thermocouple Connector Socket IS-R/S-FQ Type R/S IEC

RS Stock No.: 363-0064



RS Professionally Approved Products bring to you professional quality parts across all product categories. Our product range has been tested by engineers and provides a comparable quality to the leading brands without paying a premium price.

## Product Description

*Easy 'jab-in' connection for rapid termination, just push wire in and tighten screw. Contacts are polarised to prevent incorrect connection.*

## General Specifications

|                            |  |
|----------------------------|--|
| <b>General Description</b> | Contacts are polarised to prevent incorrect connection |
|----------------------------|--|

## Specifications

|                          |                   |
|--------------------------|-------------------|
| <b>Thermocouple Type</b> | R/S IEC           |
| <b>Connector Type</b>    | Quick Wire Socket |
| <b>Connector Size</b>    | Standard          |
| <b>Colour</b>            | Orange            |
| <b>Max. Temperature</b>  | 220°C             |
| <b>+Positive Contact</b> | Copper            |
| <b>-Negative Contact</b> | Copper Alloy      |

## Approvals

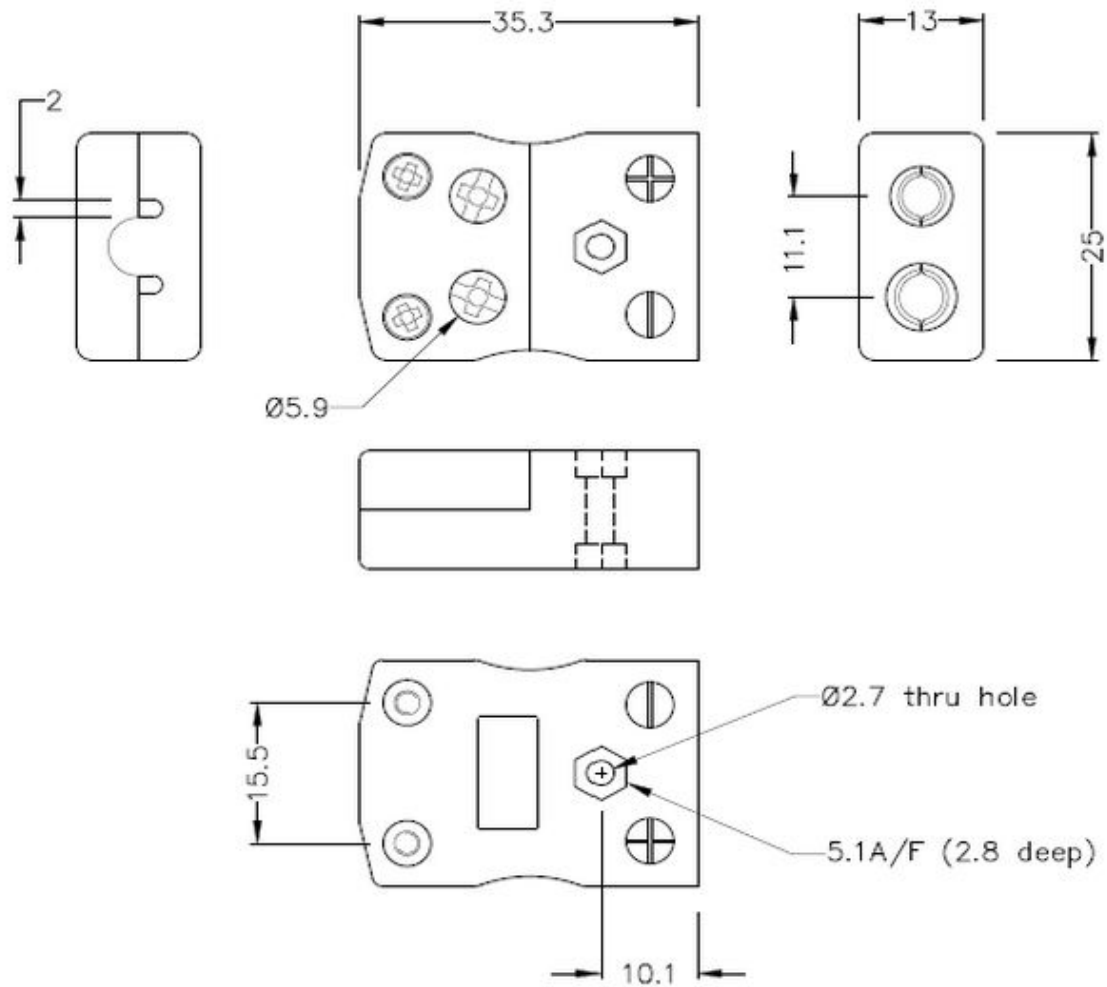
|                       |                        |
|-----------------------|------------------------|
| <b>RoHS Compliant</b> | Yes                    |
| <b>Standards Met</b>  | BS EN 50212:1997. RoHS |

## Thermocouple Connectors Product Guide

A comprehensive family of miniature and standard Thermocouple Connectors, accessories, panels, terminal and barrier blocks. Available in IEC, ANSI & JIS colour specifications.

[Click below to view:](#)

[RS Pro Thermocouple Connector Selection Guide](#)



**Standard in-line Socket - Quick Wire**  
(dimensions in mm)

RS Components is a leading provider for Automation and Control Gear, below is a selection of best selling products:

|   |   |  |
|---|---|--|
| <p style="text-align: center;"><b>rspro.com</b></p> <div style="text-align: center;"> </div> <p style="text-align: center;"><b>Temperature.<br/>It matters</b></p>  | <p style="text-align: center;"><b>Calibration</b></p> <p>Whether it's existing equipment or a new purchase, you need to have confidence in the accuracy of your measurements.</p> <p>That's where our calibration service can help.</p> <p>Purchase new products with confidence.</p> <p>A certificated calibrated sensor straight out of the box, ready to use.</p> <div style="text-align: center;"> <p><b>RTD Detectors</b></p> </div> <p>Wire-wound type provides greater accuracy and stability but are vulnerable to shock.</p> <p>Flat film type are resistant to shock and have quicker thermal response times.</p> <p>Various lengths and diameters available, in class A, B and 1/10th Din.</p> | <p style="text-align: center;"><b>Best Sellers</b> </p> <div style="display: flex; align-items: flex-start;"> <div style="margin-left: 10px;"> <p><b>ANSI SYSCAL Type K Mineral Insulated Thermocouple</b><br/>RS 181-7296</p> </div> </div> <div style="display: flex; align-items: flex-start; margin-top: 10px;"> <div style="margin-left: 10px;"> <p><b>IEC SYSCAL Type K Mineral Insulated Thermocouple</b><br/>RS 181-7288</p> </div> </div> <div style="display: flex; align-items: flex-start; margin-top: 10px;"> <div style="margin-left: 10px;"> <p><b>IEC SYSCAL Type J Mineral Insulated Thermocouple</b><br/>RS 181-7305</p> </div> </div> |
| <div style="display: flex; align-items: flex-start;"> <div style="margin-left: 10px;"> <p><b>Exposed Junction Thermocouples</b></p> <p>Including exposed junctions with fitted or moulded miniature plug and insulated leads, ideal for test and development applications.</p> <p>1, 2, 3, 5 &amp; 10m lengths available in IEC or ANSI colours.</p> </div> </div> <div style="display: flex; align-items: flex-start; margin-top: 10px;"> <div style="margin-left: 10px;"> <p><b>ANSI Type K Exposed Junction</b><br/>RS 814-0134<br/>Allied 70656459</p> </div> </div> <div style="display: flex; align-items: flex-start; margin-top: 10px;"> <div style="margin-left: 10px;"> <p><b>ANSI Type K High Temp Exposed Junction</b><br/>RS 131-4749<br/>Allied 71080908</p> </div> </div> <div style="display: flex; align-items: flex-start; margin-top: 10px;"> <div style="margin-left: 10px;"> <p><b>IEC Type K Exposed Junction</b><br/>RS 363-0250<br/>Allied 70643600</p> </div> </div> | <div style="display: flex; align-items: flex-start;"> <div style="margin-left: 10px;"> <p><b>Fabricated and Specialist Thermocouples</b></p> <p>Styles include; Magnet, Washer, Nozzle, Leaf, Bayonet &amp; Bolt thermocouple. Various lengths and calibration types available.</p> </div> </div>   | <p style="text-align: center;"><b>Best Sellers</b> </p> <div style="display: flex; align-items: flex-start;"> <div style="margin-left: 10px;"> <p><b>Magnet Thermocouple</b><br/>RS 762-1115<br/>Allied 70651739</p> </div> </div> <div style="display: flex; align-items: flex-start; margin-top: 10px;"> <div style="margin-left: 10px;"> <p><b>Heavy Duty Thermocouple</b><br/>RS 762-1128<br/>Allied 70651743</p> </div> </div> <div style="display: flex; align-items: flex-start; margin-top: 10px;"> <div style="margin-left: 10px;"> <p><b>Rubber Patch Thermocouple</b><br/>RS 290-5036<br/>Allied 70642886</p> </div> </div>                   |
| <div style="display: flex; align-items: flex-start;"> <div style="margin-left: 10px;"> <p><b>Thermocouple &amp; PRT Cable</b></p> <p>Thermocouple cables are available in IEC or ANSI colour codes. Insulation types include PFA, PTFE, PVC &amp; Fibreglass. Available spool lengths include 10, 25, 50, 100 and 200m.</p> </div> </div> <div style="display: flex; align-items: flex-start; margin-top: 10px;"> <div style="margin-left: 10px;"> <p><b>IEC PVC Insulated Flat Pair</b><br/>RS 219-4573<br/>Allied 70641630</p> </div> </div> <div style="display: flex; align-items: flex-start; margin-top: 10px;"> <div style="margin-left: 10px;"> <p><b>ANSI PFA Insulated Twin Twisted</b><br/>RS 814-0030<br/>Allied 70656106</p> </div> </div> <div style="display: flex; align-items: flex-start; margin-top: 10px;"> <div style="margin-left: 10px;"> <p><b>IEC Glassfibre Insulated Flat Pair</b><br/>RS 236-3836<br/>Allied 70641730</p> </div> </div>                           | <div style="display: flex; align-items: flex-start;"> <div style="margin-left: 10px;"> <p><b>Thermocouple Connectors</b></p> <p>Range of miniature or standard thermocouple connectors. Available in thermocouple types K, J, T, E, N, RS, B, and copper. IEC, ANSI &amp; JIS colour codes available.</p> </div> </div>   | <p style="text-align: center;"><b>Best Sellers</b> </p> <div style="display: flex; align-items: flex-start;"> <div style="margin-left: 10px;"> <p><b>IEC Thermocouple Plug</b><br/>RS 455-9764<br/>Allied 70644391</p> </div> </div> <div style="display: flex; align-items: flex-start; margin-top: 10px;"> <div style="margin-left: 10px;"> <p><b>ANSI Thermocouple Socket</b><br/>RS 769-1127<br/>Allied 70652125</p> </div> </div> <div style="display: flex; align-items: flex-start; margin-top: 10px;"> <div style="margin-left: 10px;"> <p><b>IEC Thermocouple PCB Socket</b><br/>RS 381-7570<br/>Allied 70643749</p> </div> </div>              |

RS Components is a leading provider for Automation and Control Gear, below is a selection of best selling products:

|   |   |  |  |
|---|---|--|--|
|  <p><b>Mineral Insulated Thermocouples</b></p> <p>Available in various calibration types with a variety of terminations. These include; Thermocouple plugs, Terminal heads and Thermocouple cable</p>  | <p><b>Best Sellers</b> </p> <p><b>IEC Thermocouple with PTFE Cable</b><br/>RS 397-1236<br/>Allied 70643843</p> <p><b>IEC Thermocouple with Mini Plug</b><br/>RS 397-1488<br/>Allied 70643863</p> <p><b>ANSI Thermocouple with PFA Cable</b><br/>RS 847-1019<br/>Allied 70658112</p> |  <p><b>NEW PRODUCTS</b></p> <p>RS PRO, the own brand of RS Components, offers an unbeatable range of products across all industries with quality you can trust.</p> <p>New products are constantly added to improve the offering of our product range.</p> | <p><b>NEW PRODUCTS</b> </p> <p><b>Brake Pad Temp Sensor</b><br/>RS 200-0601<br/>Allied 72173869</p> <p><b>RTD Temp Sensor Hirschmann Style</b><br/>RS 200-0594<br/>Allied 72173862</p> <p><b>Washer Thermocouple</b><br/>RS 200-0616<br/>Allied 72173882</p> |
|  <p><b>Sensors with Industrial Terminal Heads</b></p> <p>Industrial sensors housed in a stainless steel sheath and terminal head protection to IP67. Available as a thermocouple or Pt100.</p>  | <p><b>Best Sellers</b> </p> <p><b>Type K 300mm Long</b><br/>RS 787-7829<br/>Allied 70653306</p> <p><b>Type K 200mm Long</b><br/>RS 787-7816<br/>Allied 70653303</p> <p><b>Type K 100mm Long</b><br/>RS 787-7804<br/>Allied 70653235</p>   | <p><a href="http://www.rspro.com">www.rspro.com</a></p>  <p><a href="http://www.alliedelec.com">www.alliedelec.com</a></p>   |  |
|  <p><b>L60 Fine Wire Thermocouple Welder</b></p> <p>The Thermocouple Welder is a compact, simple-to-use instrument designed for thermocouple and fine wire welding. Supplied with foot switch, spare electrodes, pliers &amp; safety glasses, impact clip and pen plate.</p> | <p><b>Best Sellers</b> </p> <p><b>L60 Fine Wire Thermocouple Welder</b><br/>RS 363-0351<br/>Allied 70825788</p>    |  |  |