

## FEATURES

- Sturdy design
- Durable tin plated steel case
- Good contact for gold - plated embossing
- Good EMI/RFI protection

## RS PRO Family Name

RS Stock No.: 2469515



RS Professionally Approved Products bring to you professional quality parts across all product categories. Our product range has been tested by engineers and provides a comparable quality to the leading brands without paying a premium price.

### Product Description

The D-Sub connector is a common Type of I/O (input/output) contact widely used in the computer and data storage industries to provide power and point-to-point communication between two devices such as computers and monitors.

The D-SUB connector consists of two or more rows of parallel pins or sockets surrounded by a D-shaped metal shell to provide mechanical support and ensure proper positioning during fitting. These D-Sub connectors can be used as female D-Sub sockets (or D-SUB sockets) and female contacts, or male D-SUB plugs and male pin contacts. Receptacle type female connector and plug type male connector are connected.

Please note that d-Sub with plastic housing cannot be coupled to D-SUB with metal housing.

### General Specifications

|                  |  |
|------------------|--|
| Shell            | SPCC Material, Nickel Plated Front, Tin Plated Rear                        |
| Insulator        | P.B.T+30% Glass Fibre(UL94V-0)   |
| Contact Finish   | Gold Flash On Contact Area, Tin Plated On Solder Tail, under Plated Nickel |
| Contact Material | Brass  |
| Screw            | 12L14, Nickel Plating  |
| Gender           | Male   |
| Mounting Type    | Panel installation   |
|                  |  |

### Electrical Specifications

|                       |                                |
|-----------------------|--------------------------------|
| Operating Temperature | -50°~+105°                     |
| Current Rating        | 5amps                          |
| Withstanding Voltance | 1000V (one minute)             |
| Contact Resistance    | 20m $\Omega$ max               |
| Insulation Resistance | 1000m $\Omega$ Min. at 500V DC |

### Protection Category

|  |  |
|--|--|
|  |  |
|--|--|

**Additional Information**

|                      |  |
|----------------------|--|
| EAN                  |  |
| Custom Tariff Number |  |

**Classification**

|                  |  |
|------------------|--|
| eCl@ss (Version) |  |
| UNSPSC (Version) |  |

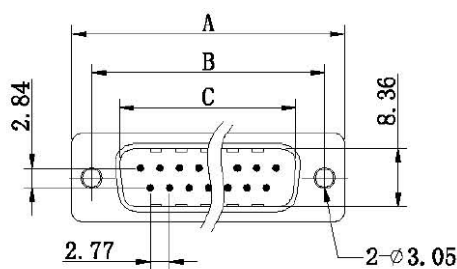
**Approvals**

|                              |      |
|------------------------------|------|
| Declarations                 | CE   |
| Hazardous Area Certification |      |
| Standards Met                | ROHS |

**Similar Products**

| Stock No. | Brand  | Product Name    | Attribute 1  | Attribute 2                        | Attribute 3 |
|-----------|--------|-----------------|--------------|------------------------------------|-------------|
| 5443806A  | RS PRO | D-Sub Connector | Study design | Operating Temperature is 50°~+105° |             |

Connection Diagrams / Assembly Diagrams / Illustrations / Accessories



| POLES | PART No. | Dim. A | Dim. B | Dim. C | Dim. D |
|-------|----------|--------|--------|--------|--------|
| 9     | DB-9P    | 30.81  | 24.99  | 16.92  | 19.25  |
| 15    | DB-15P   | 39.14  | 33.32  | 25.25  | 27.51  |
| 25    | DB-25P   | 53.04  | 47.04  | 38.96  | 41.20  |
| 37    | DB-37P   | 69.40  | 63.50  | 55.42  | 57.71  |

